



CITY OF SANTA BARBARA

REGULAR MEETING SANTA BARBARA ARTS AND CRAFTS SHOW ADVISORY COMMITTEE

Tuesday
April 12, 2022
6:00 p.m.

Palm Park Beach House
236 E Cabrillo Blvd, Santa Barbara CA 93101

MEETING MINUTES

CALL TO ORDER 6:09pm

ROLL CALL

Committee

Cris Hamilton – Arts, present
Brad Kazmerzak – Arts, excused absence
(seat filled by Jeff Kennedy)
Marilyn Dannehower – Crafts, present
Nicole Horstin – Crafts, Chair, present

Crafts Alternates

Jack Bailey – 1st Alternate, present
Marilyn Loperfido – 2nd Alternate, present

Arts Alternates

Erin Duffy – 1st Alternate, not present
Jeff Kennedy – 2nd Alternate, present/filled-in

Staff

Rich Hanna – Recreation Manager, present
Jason Bryan – Senior Recreation Supervisor, present
Janet Sackett – Administrative Specialist, not present

Parks & Recreation Commission Liaison

Robin Unander-La Berge, not present

Member At Large (vacant)

SCREEN NEW MEMBERS

GENERAL BUSINESS

1. Changes To The Agenda
None.

2. Written Communications
There was no discussion on written communication.

3. Public Comment
Jack Bailey stated that the west side of the show was superior and is not accessible to newer members.

Margaret Landreau stated that Sign Up Genius is not good for accessibility as not all members have equal access to technology.

4. Review Rules Ad-Hoc Meeting

Jason Bryan stated that an online meeting was held on April 7th with less structure than previous Ad-Hoc meetings where input was received on proposed changes to the violation procedure. A future meeting will be scheduled allowing more discussion and input on specific language changes. A video of that meeting can be viewed online with the following link:

https://santabarbaraca.gov.zoom.us/rec/share/yDXWek6s3RcZBtYze6G49uw0gcTLIJPJ1UTh7BHNhSwyFwSWUwgdqt50Lvy6NsmR.OXVyJ_OEPf0PDfEf?startTime=1649379608000

CONSENT ITEMS

1. Minutes– For Action (Attachment)

M/S/C to approve the minutes of the March 8, 2022 meeting with the addition of “Members with suggestions on the Sign Up Genius system were invited to contact Marilyn Loperfido or Deborah Healy.” in old business item 3.

2. Attendance Report – For Information

Jason Bryan presented attendance data for March 2022

OLD BUSINESS

1. Review rule change to increase the minimum from 2 to 5 hours to receive attendance credit – For Discussion

Committee:

Jeff Kennedy was opposed to changing the rules and suggested a new system to give a benefit to members who stay longer in attendance.

Public Comment:

Deborah Healy suggested a hybrid approach that allows members to receive attendance credit if they're present for 2 hours if they setup at the end of the Show line.

Margaret shared a picture from the previous weekend with at least 8 empty spaces in the West section of the Show that was detrimental to members in the East section.

Jim Hockin stated that members leaving early because of slow business are thinking of themselves and not the show. Mr. Hockin also questioned the logistics on how one monitor can ensure the amount of time someone exhibits.

Claire Weber suggested the monitor wouldn't need to take attendance until 2pm if we have multiple monitors (if this policy is approved). Members in the East section are impacted the most by gaps; members who leave early are generally not committed to the Show.

Eric Whitney supports this rule change as part of an approach to reduce gaps in conjunction with other policies.

Lilia Megyi stated she accepted another job on Sundays because the rules allowed attendance credit for 2 hours participation. She would like the opportunity continue receiving attendance credit for 2 hours if she sets up at the end of the Show line.

Nadrea Sugich stated that everyone completing setup by 10:00am was a past practice and it is chaotic when members setup after that time.

Jack Bailey wanted clarification that members commit to 5 hours if they're in a prime space in the West section. He also questioned the effects if members had a minimal setup and waited in their vehicle until 3:00pm because that's effectively creating a gap.

Marilyn Loperfido suggests working on a different plan for G.1 that separates minimum attendance from the gap issue. She stated that obtaining a medical note for leaving earlier than 5 hours can be expensive. Marilyn also requested a system where new members are assigned the next available space in the Show as they join.

Committee:

Marilyn Dannehower was open to a hybrid for 2 hours receiving attendance credit if they are at the end of the Show. The Committee did not want to move forward with an action item next month, but wanted to spend more time discussing options. Jeff Kennedy asked for staff to email all show members asking for their ideas.

2. Discuss rule suggestion to provide attendance credit for members with seniority – For Discussion

Committee:

Marilyn Dannehower reviewed the concept of introducing this rule change as a means of benefiting members with tenure to have some Sundays away from the Show without losing attendance.

Jeff Kennedy saw this as an opportunity to have newer member's fill-in to get better opportunities.

Public Comment:

Margaret Landreau saw this item tied to the previous agenda item and described this as a "kinder and gentler" approach for members that may fix a lot of issues.

Lilia Megyi gave an example of sacrificing spending time with grandchildren in order to support this rule suggestion.

Eric Whitney opposes this rule suggestion because the Show is a business and members can be absent 50% of the time without losing their space assignment.

Nadreh Sugich stated that tragedies happen and this rule would allow flexibility to balance family emergencies and other needs.

Marilyn Loperfido stated she would like to look for incentives as opposed to punishments. She wants to assign new members to vacant spaces and reward

members who have been in the Show a long time. Ms. Loperfido requested certificates for members on the anniversary show.

Claire Weber stated she likes the idea of an 'across the board' benefit for all members and suggested some accommodation for people in the Yes Store or Crimson to allow more allowance for leaves from the Show.

Jim Hockin stated the Show has a leave of absence policy and would like to reward members who want to stay and not create gaps rather than other rewards.

Committee:

Jeff Kennedy stated that many years ago a person in the Crafts section suffered a tragedy and yet, because they desperately needed the Show income, they were forced to exhibit on the following Sunday. As a result Jeff Kennedy said he was able to convince former Director Richard Johns that Show members should be allowed two Sundays a year where someone else other than the Show member would be allowed to set up and sell for the distressed Show member. Mr. Johns offer was presented to the Advisory Committee at that time and the idea was rejected by the Committee.

Marilyn Dannehower will work on rule language to be work on rule language that will be presented at the May meeting as discussion.

3. Advertising Report – For Action

- a. Review the rack card design
- b. Consider purchasing two "A-Frame" signs to encourage visitors to visit the East section of the show for \$167 each including printing.

Committee:

Cris Hamilton stated the printed examples for the rack card suggestions did not accurately represent the colors in her digital files.

Public Comment:

Lilia Megyi suggested more contrast for the top of the rack card.

Marilyn Loperfido wants members to submit new images for the graphic library and suggested that the Department pay for signs.

Rich Hanna stated that the Department will match signs to purchase an additional 2 signs if the advertising fund pays for the other 2.

M/S/C to move forward with the rack card printing with minor updates to the existing layout and to approve two "A-Frame" signs.

NEW BUSINESS

1. Consider ADA Request for Accommodation for Margaret Landreau to share a space with Erin Duffy – For Action

Staff recommended approving this request based on Show rules and past practice.

Jeff Kennedy was concerned about space sharing in general.

M/S/C to approve the space sharing request with Jeff Kennedy abstaining

2. Combine Select Vacant Spaces in the East Section to Establish Larger Spaces for Future Assignments – For Action

Jason Bryan presented a plan to merge select vacant spaces to create opportunities for new members to obtain larger spaces.

M/S/C to approve the plan to merge select vacant spaces with Jeff Kennedy opposed.

ADJOURNMENT 9:05pm

Next Regular Meeting: Tuesday, May 10, 2022

**Santa Barbara Arts & Crafts Show
Screening List
April 12, 2022**

Last	First	Primary	New Addition Rejoin	Description	Decision	Cautions
Cumes	Cimmi	Arts	Addition	Prints and crowns	3-0	Shells cannot be dominant unless painted with a scene
Landreau	Margaret	Crafts	Addition	painted wood picture frames, decoupage shells		Defer to May
Van Fleet	Michelle	Crafts	Rejoin	Jewelry, sculpture, faery furniture, wands	3-0	No strung beads without a hand-made pendant that's dominant
De La Presle	Isaure (Kelly)	Arts	New	Paintings	3-0	
Fletcher	Heather	Crafts	New	Clothing and hair accessories	3-0	
Hernandez	Jorge	Arts	New	Paintings		Defer to May
Isknow	Eli	Crafts	New	Jewelry	3-0	
Johnson	Sarah	Crafts	New	Body Care Products	3-0	
Loskot	Faryn	Arts	New	Ceramics	3-0	

Show Attendance Report March 2022

Date

3/6/2022 82

3/13/2022 87

3/20/2022 140 Unreasonable Weather Day

3/27/2022 140 Unreasonable Weather Day

140 Members as of April 8, 2022 (increase of 1 since February)

East Section Space Assignments (old Crafts Section)

Draft for merging select open spaces (highlighted in orange)

Open Craft Center Lawn Adjacent to Creek Temporary Handicap	9 Sugich, Naderah 10 11 12 13 Parking	30 Jaramillo, Frances 31 32 33 Parking	45 Landreau, Margaret 46 47 Parking
Open Craft Center Lawn Adjacent to Driveway Temporary Handicap	13 Bergey, Lucinda 14 15 16 Parking	33 Ramos, Xavier 34 35 Parking	47 Pate, Steven 48 49 50 Parking
Open Marker 1 to Bollard Temporary Handicap	16 Lopez, Efrain 17 18 19 20 Parking	35 Sanchez, Claudia 36 37 Parking	50 Zardo, Janine 51 52 53 54 Parking
1 Temp Open 2 3 Junak, Steve LOA 1/1/22 to 3/31/22 Parking	20 Healy, Deborah 21 22 Parking	37 Schroeter, Kiyoko 38 39 Parking	54 Symonds, Kate 55 56 Parking
3 Temp Open 4 5 6 Evelyn-Weddle, Kim LOA 1/1/22 to 3/31/22 Parking	22 Healy, Kevin 23 24 25 26 Parking	39 Otomo, Nao TEMP 40 41 42 Holmes, Thomas LOA 1/1/22 to 6/30/22 Parking	56 Pope-Stietzel, Diedre 57 58 Parking
6 Megyei, Lilia 7 8 9 Parking	26 Gruenberg, Joel 27 28 29 30 Parking	42 Sartain, Ubon TEMP 43 44 45 Montalbo, Gary LOA to 1/1/22 to 6/1/22 Parking	58 Whitney, Eric 59 60 Parking

East Section Space Assignments (old Crafts Section)

Draft for merging select open spaces (highlighted in orange)

60 Weber, Claire 61 62 63 Parking	75 Bayless, James 76 77 78 Parking	93 Sparks, Leigh 94 95 96 Red Zone	107 Adams, Bonnie 108 109 110 Parking
63 Lehman, Laurie 64 65 Parking	78 Baily, Jack 79 80 81 82 Parking	96 Cumes, Cimmi 97 98 Red Zone	110 Loving, Daniel 111 112 113 Parking
65 Wilson, Ute 66 67 68 Parking	82 Horstin, Nicole 83 84 85 Parking	98 Open 99 100 Temporary Handicap Red Zone	113 Keller, Stephen 114 115 116 Parking
68 Dunbar, Susan 69 70 71 Parking	85 Open 86 87 88 Red Zone	100 Cumes, Paul 101 102 Red Zone	116 Blair, Amy 117 118 Parking
71 Open 72 73 Parking	88 Goodwin, Kristina 89 90 91 Red Zone	102 Bojorquez, Christopher 103 104 Parking	118 Miller, Alyson 119 120 121 Parking
73 Iverson, Leanne 74 75 Parking	91 Open 92 93 Red Zone	104 Maupin, Thomas 105 106 107 Parking	121 Curry, Staci 122 123 124 Parking

East Section Space Assignments (old Crafts Section)

Draft for merging select open spaces (highlighted in orange)

124 Newman, Pamela 125 126 127 128 Parking	139 Open 140 141 142 Parking	153 Open 154 155 Parking	170 Kry, Jerry 171 172 173 174 Parking
128 Draeger, David 129 130 Parking	142 Dalidd, Shabina 143 144 Parking	155 Suman, Alvaro 156 157 158 Parking	174 Open 175 176 177 Parking
130 Open 131 132 Parking	144 Open 145 146 Parking	158 Open 159 160 Parking	177 Open 178 179 Parking
132 Open 133 134 135 Parking	146 Open 147 148 Parking	160 Open 161 162 163 164 Parking	179 Open 180 181 Parking
135 Open 136 137 Parking	148 Open 149 150 Parking	164 Goff, Christine 165 166 167 Parking	181 Open 182 183 184 Parking
137 Open 138 139 Parking	150 Open 151 152 153 Parking	167 Open 168 169 170 Parking	184 Open 185 186 Parking

East Section Space Assignments (old Crafts Section)

Draft for merging select open spaces (highlighted in orange)

186 Open 187 188 Parking	201 Open 202 203 204 205 Yellow Zone	217 Banales, Emma 218 219 220 Red Zone	232 Open 233 234 Red Zone
188 Open 189 190 191 Parking	205 Open 206 207 208 Yellow Zone	220 Open 221 222 Red Zone	234 Open 235 236 Red Zone
191 Open 192 193 194 Parking	208 Open 209 210 211 Yellow Zone	222 Open 223 224 225 Red Zone	236 Open 237 238 239 Red Zone
194 Open 195 196 197 Parking	211 Open 212 213 Yellow Zone	225 Open 226 227 228 Red Zone	239 Open 240 241 Cabrillo Rock 242 Red Zone
197 Open 198 199 Temporary Handicap Parking	213 Open 214 215 Yellow Zone	228 Open 229 230 Red Zone	242 Open 243 244 245 Red Zone
199 Open 200 201 Parking	215 Open 216 217 Red Zone	230 Open 231 232 Red Zone	245 Open 246 247 248 Red Zone

East Section Space Assignments (old Crafts Section)

Draft for merging select open spaces (highlighted in orange)

248 Open 249 250 Red Zone	263 Open 264 265 266 Red Zone	280 Open 281 282 Red Zone	296 Open 297 298 299 Red Zone
250 Open 251 252 253 Red Zone	266 Open 267 268 269 Red Zone	282 Open 283 284 285 Red Zone	299 Open 300 301 Red Zone
253 Open 254 255 256 Red Zone	269 Open 270 271 272 Red Zone	285 Open 286 287 288 Red Zone	301 Open 302 303 Red Zone
256 Open 257 258 Red Zone	272 Open 273 274 Red Zone	288 Open 289 290 Red Zone	303-321 Unassigned Red Zone
258 Open 259 260 Red Zone	274 Open 275 276 277 Red Zone	290 Open 291 292 293 Red Zone	321-331 Unassigned Yellow Zone
260 Open 261 262 263 Red Zone	277 Open 278 279 280 Red Zone	293 Open 294 295 296 Red Zone	337-349 Unassigned Parking

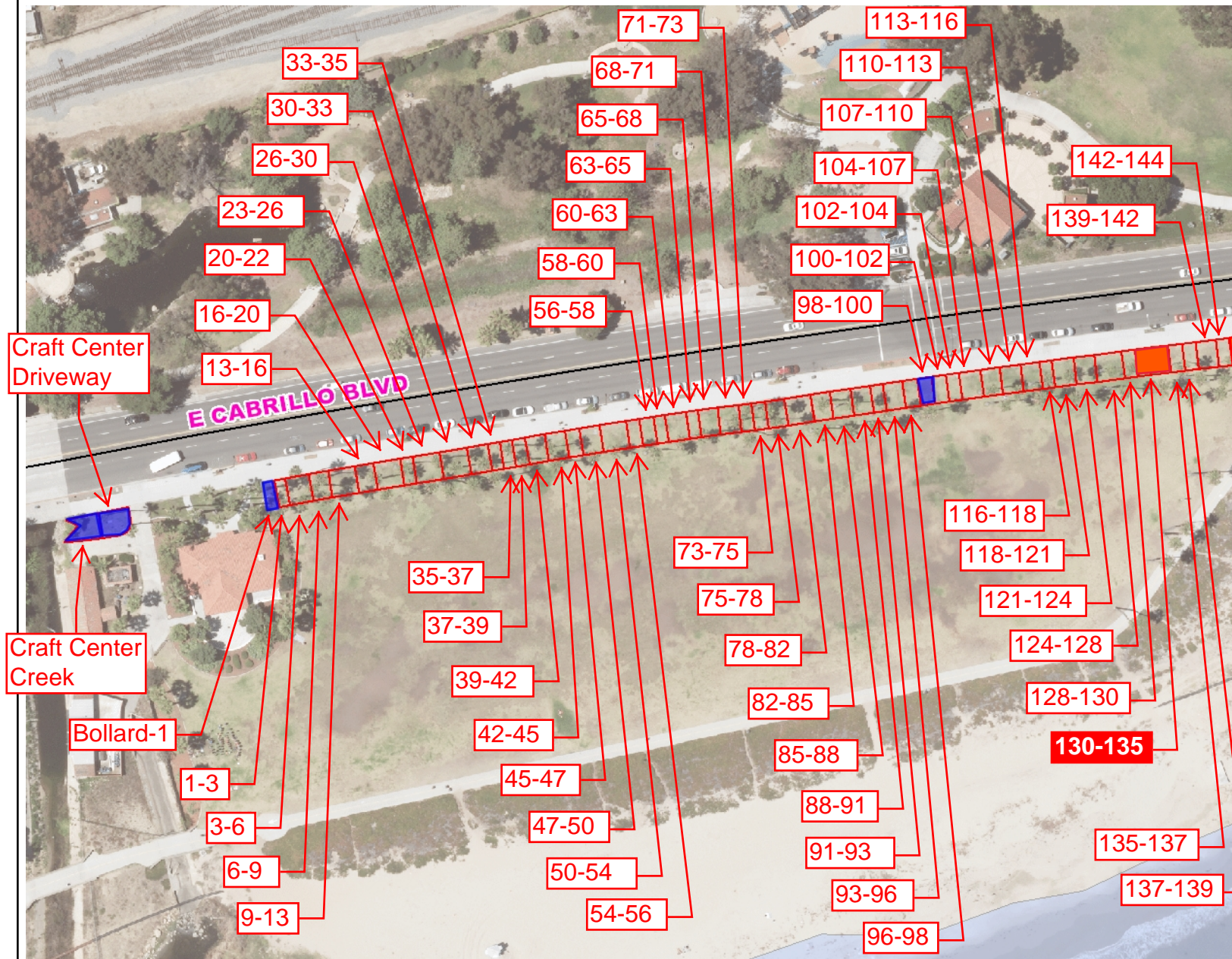
East Section Space Assignments (old Crafts Section)

Draft for merging select open spaces (highlighted in orange)

349 Open 350 351 Red Zone			



East Section Space Assignment Map



Legend

- City Limits
- Pacific Ocean
- Arts Crafts Parcels
 - Art Parcel
 - Craft Parcel
- Street Centerlines
- sde4aerial.SDE.AERIAL2015C
 - Red: Band_1
 - Green: Band_2
 - Blue: Band_3

1: 1,291



0.041 0 0.020 0.041 Miles

MAP DISCLAIMER

NAD_1983_StatePlane_California_V_FIPS_0405_Feet
© City of Santa Barbara

Reported on 04/05/2016 09:01 AM

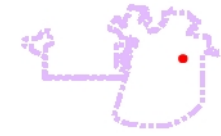
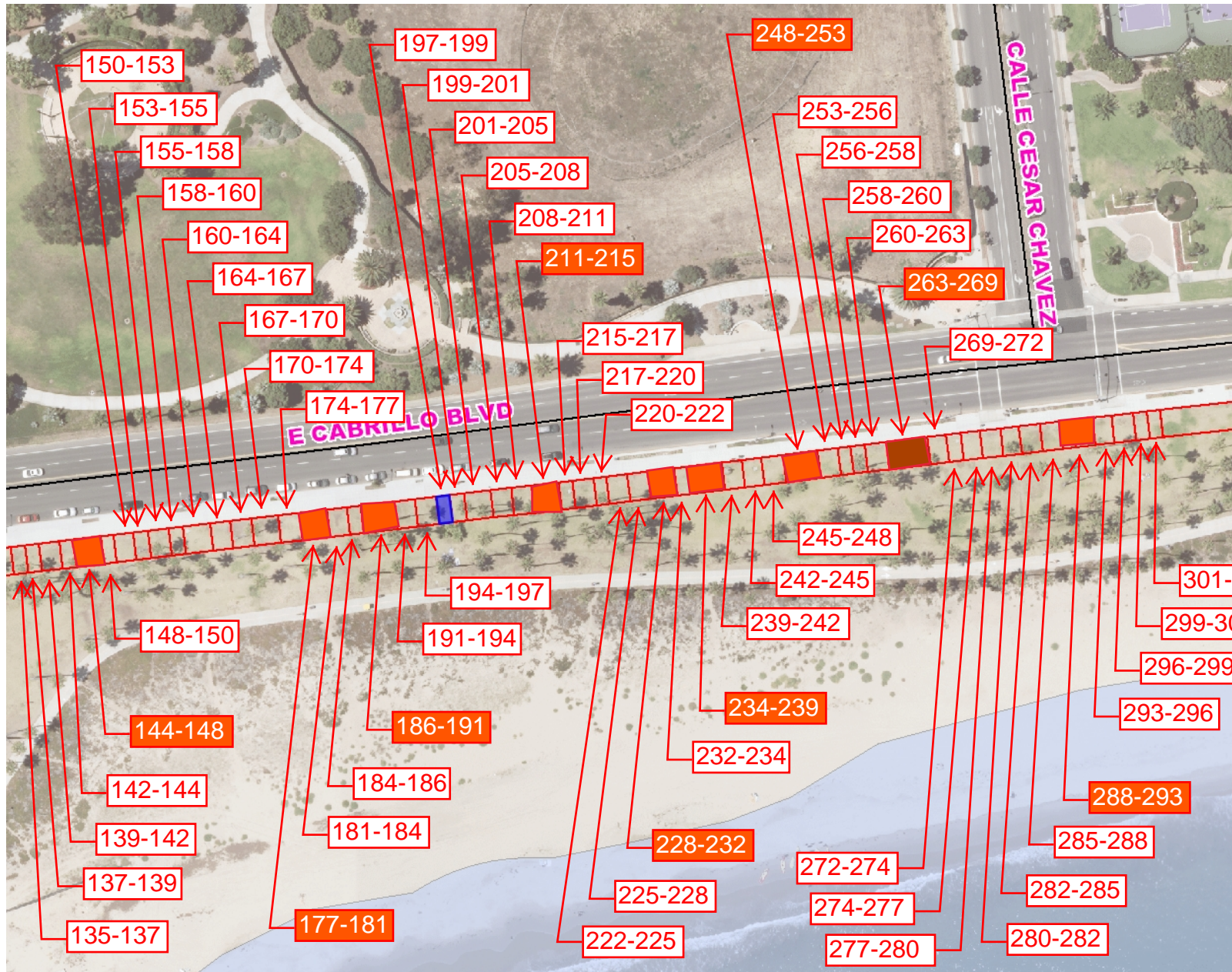
This service has been provided to allow a visual display of City information. Every effort has been made to ensure the accuracy of the map and data. The City of Santa Barbara assumes no responsibility arising from the use of this information. THE MAPS AND ASSOCIATED DATA ARE PROVIDED WITHOUT A WARRANTY OF ANY KIND. This map was created using the City of Santa Barbara Mapping Analysis and Printing System application.

Notes

Blue spaces are for handicap show members



East Section Space Assignment Map



Legend

- City Limits
- Pacific Ocean
- Arts Crafts Parcels
 - Art Parcel
 - Craft Parcel
- Street Centerlines
- sde4aerial.SDE.AERIAL2015C
 - Red: Band_1
 - Green: Band_2
 - Blue: Band_3

1: 1,291



Notes

Blue spaces are for handicap show members

0.041 0 0.020 0.041 Miles

NAD_1983_StatePlane_California_V_FIPS_0405_Feet
© City of Santa Barbara

Reported on 04/05/2016 09:03 AM

MAP DISCLAIMER

This service has been provided to allow a visual display of City information. Every effort has been made to ensure the accuracy of the map and data. The City of Santa Barbara assumes no responsibility arising from the use of this information. THE MAPS AND ASSOCIATED DATA ARE PROVIDED WITHOUT A WARRANTY OF ANY KIND. This map was created using the City of Santa Barbara Mapping Analysis and Printing System application.