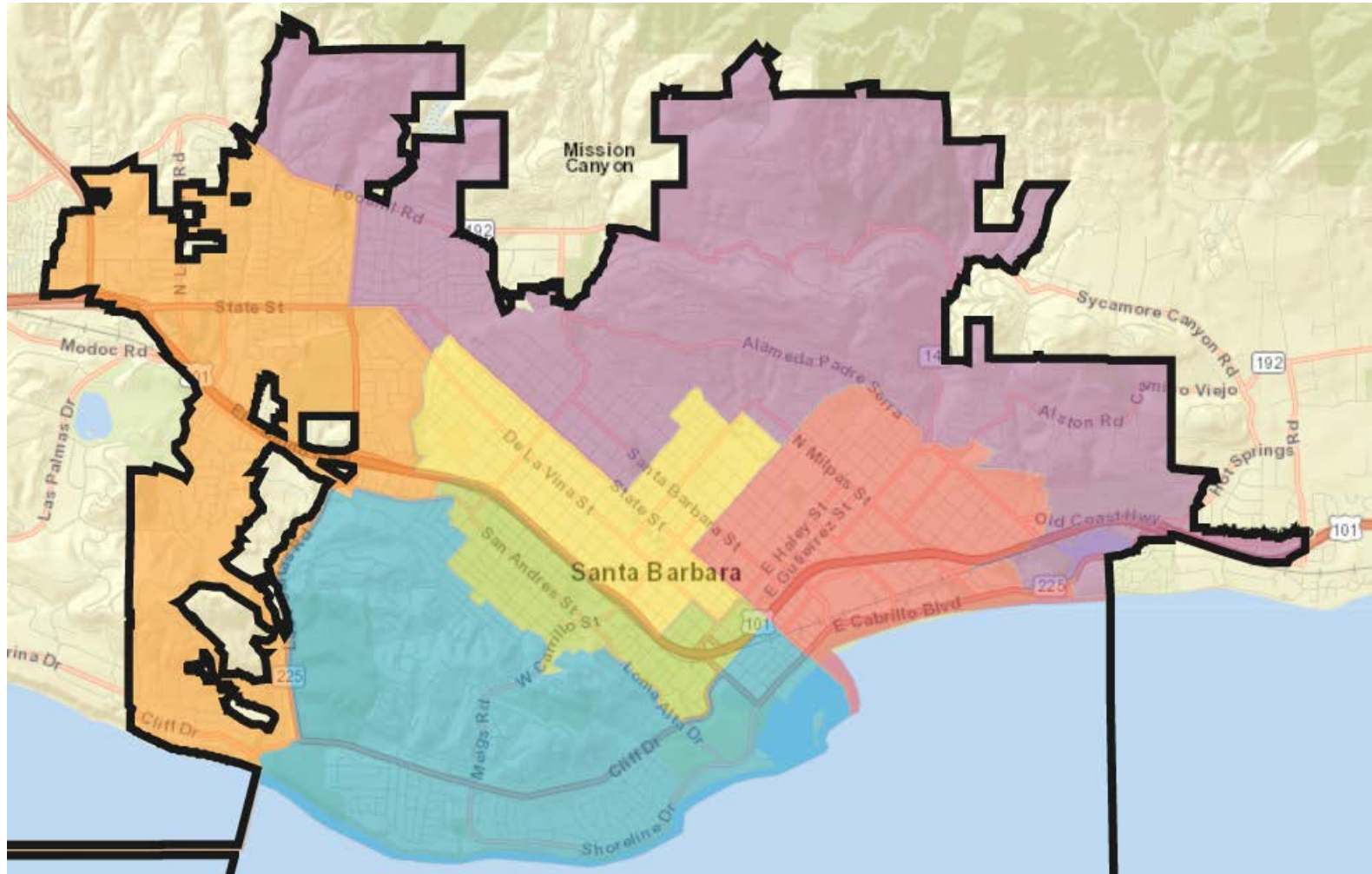


City of Santa Barbara

2021-22 Redistricting



Redistricting Rules and Goals

1. Federal Laws

- ❑ Equal Population
- ❑ Federal Voting Rights Act
- ❑ No Racial Gerrymandering



2. California Criteria for Cities

1. **Geographically contiguous**
2. **Undivided neighborhoods and “communities of interest”**
(Socio-economic geographic areas that should be kept together)
3. **Easily identifiable boundaries**
4. **Compact**
(Do not bypass one group of people to get to a more distant group of people)

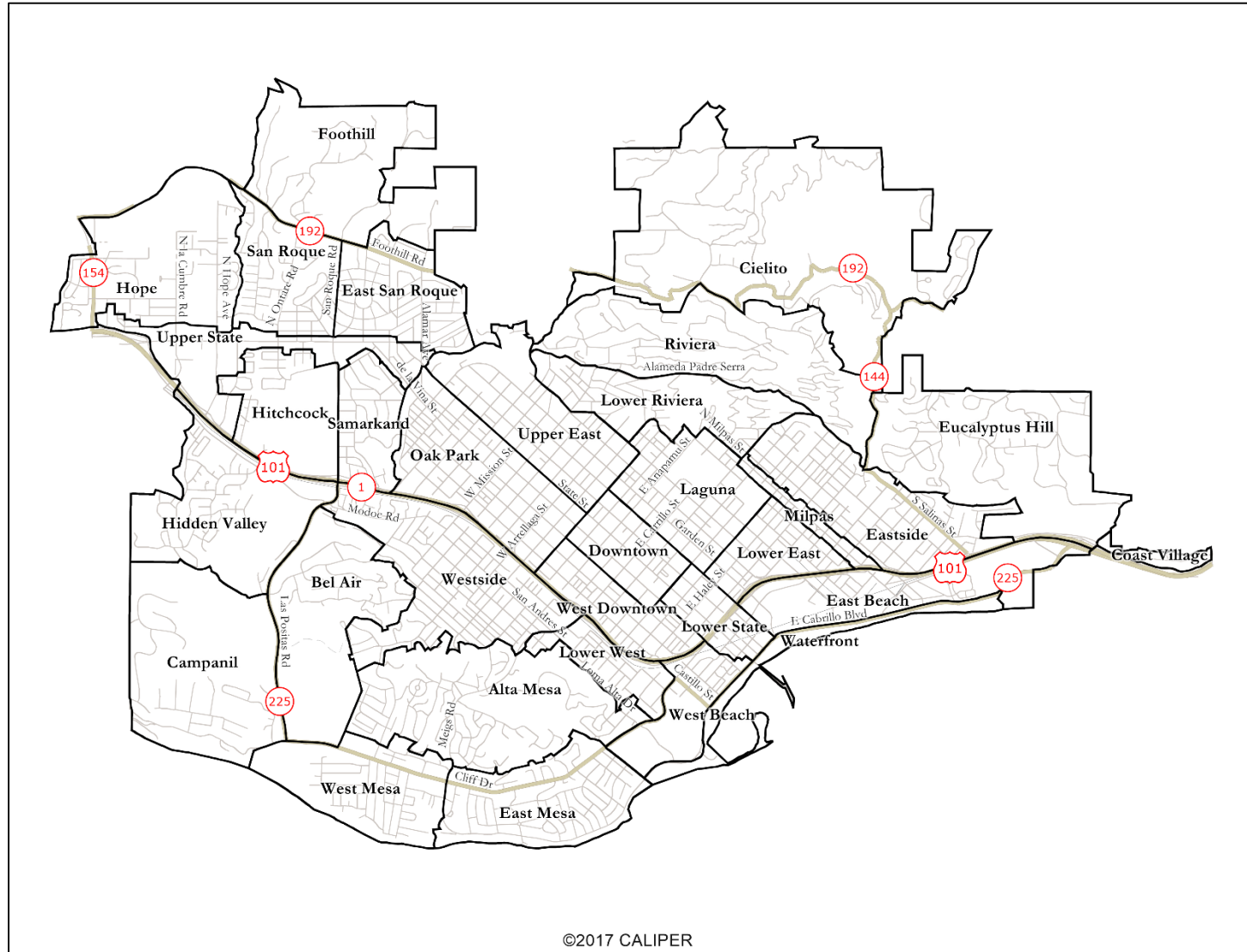
Prohibited:

“Shall not favor or discriminate against a political party.”

3. Other Traditional Redistricting Principles

- ❑ **Minimize voters shifted to different election years**
- ❑ **Respect voters’ choices / continuity in office**
- ❑ **Future population growth**
- ❑ **Preserving the core of existing districts**

Santa Barbara Neighborhoods



Santa Barbara Communities of Interest

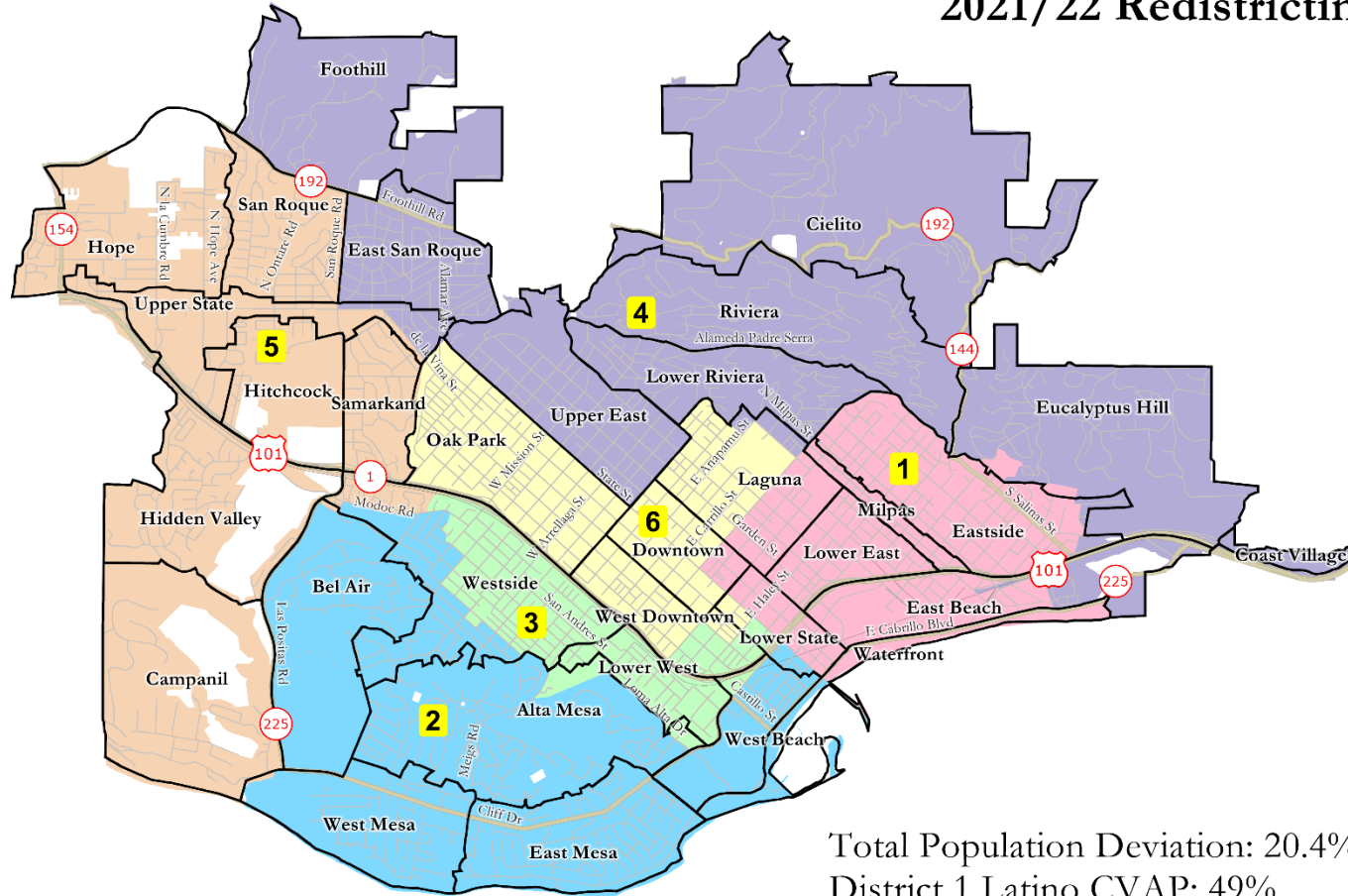
Many potential examples that can be found on the [Story Map](#):

- ❑ Central business district: Area bounded by Sola, Garden, 101 & De La Vina
- ❑ Historic districts: Biggest includes the C.B.D. and area along the waterfront
- ❑ School attendance areas: 13 elementary, 3 junior high & 2 high school areas
- ❑ Fire hazard zones: High fire risk area covering the foothill and riviera areas
- ❑ ZIP code areas: 93101 (Downtown + Westside), 93103 (Eastside + Riviera), 93105 (Uptown), 93109 (Mesa), 93110 (Hope)
- ❑ Land use/zoning areas: Marked differences between certain neighborhoods
- ❑ Concentrations of socioeconomic interests:
 - ❑ Speak Spanish at home: the Eastside and Westside
 - ❑ Families with children at home: the Eastside and Westside
 - ❑ Income \$75,000 or higher: the mesa, the foothills, and San Roque
 - ❑ Education BA or higher: the mesa, the foothills, and San Roque
 - ❑ Multi-family housing: Downtown and the waterfront
 - ❑ Renter housing: Downtown, Eastside, Westside, and the waterfront

Map of Current Plan

Current Plan

City of Santa Barbara
2021/22 Redistricting



Total Population Deviation: 20.4%
District 1 Latino CVAP: 49%
District 3 Latino CVAP: 45%

Santa Barbara Airport in District 5

©2017 CALIPER

National Demographics Corporation, January 1, 2022

Analysis of Current Plan

- ❑ Equal population
 - ❑ Districts 1 and 3 are underpopulated; Districts 4 and 5 are overpopulated
 - ❑ District 3 at -11%, District 4 at +9%, so the total deviation is 20%; should be less than 10%
- ❑ Voting Rights Act
 - ❑ District 1's CVAP is 49% Latino, while District 3's CVAP is 45% Latino
- ❑ Contiguity
 - ❑ All six districts are contiguous (Santa Barbara Airport is connected to District 5 via a strip of city territory that runs through the ocean)
- ❑ Neighborhoods and communities of interest
 - ❑ Neighborhoods that are substantially split: Laguna, West Downtown, Lower State, Westside
 - ❑ Potential communities of interest that are substantially split: Central Business District, Historic District, waterfront area, greater San Roque
- ❑ Easily identifiable boundaries
 - ❑ The District 2/3 boundary follows minor streets in the Westside that do not conform to neighborhood boundaries, as does the District 3/6 boundary in West Downtown
- ❑ Compactness
 - ❑ All six districts are reasonably compact, with the possible exception of District 5

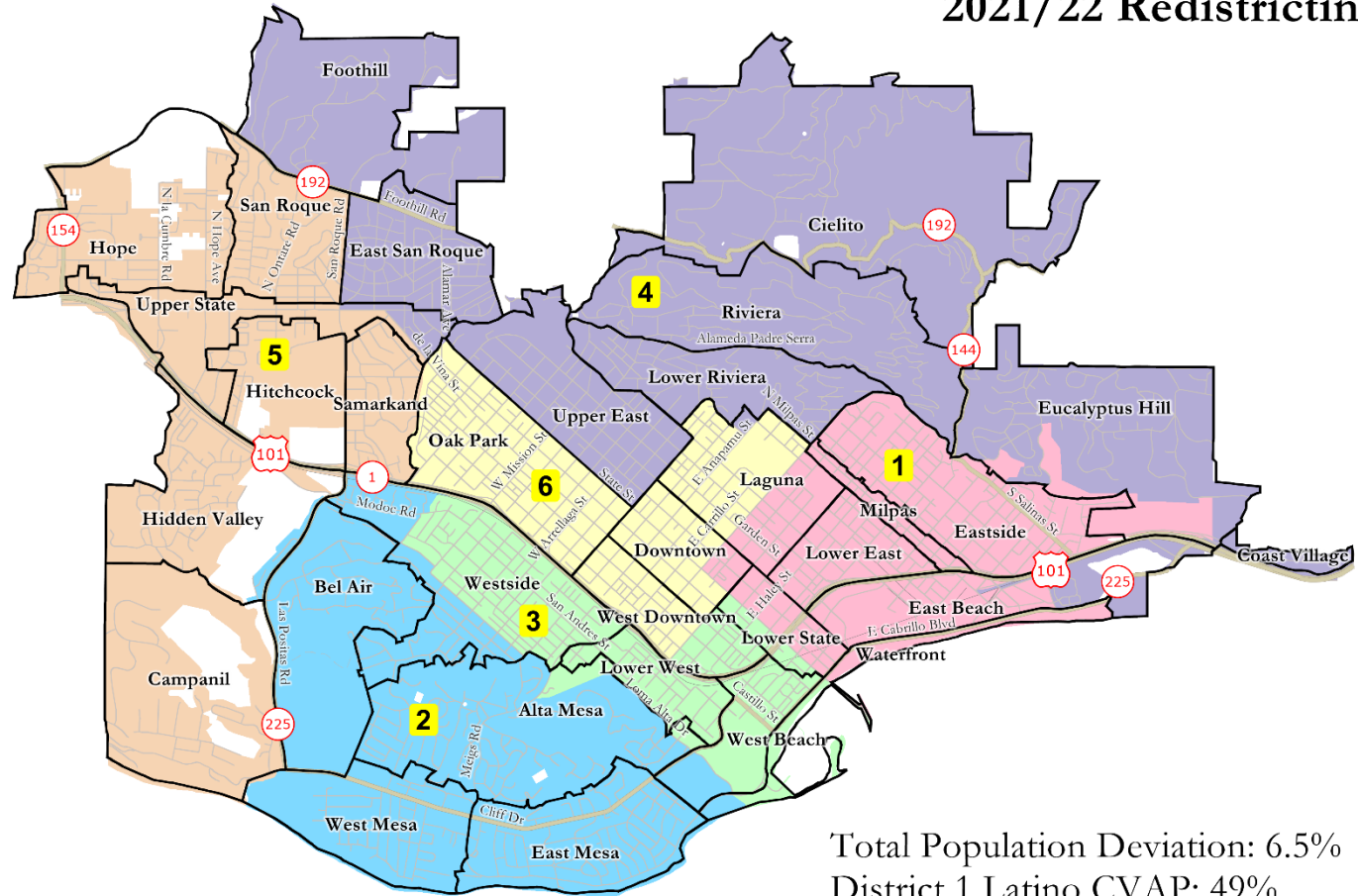
Maps of NDC Draft Plans

Key Features

- Minimal change from the current plan
- District 1 expands eastward toward Eucalyptus Hill, at the expense of District 4
- District 3 expands southward toward West Beach, at the expense of District 2
- Gives every district a piece of the coast, except for District 6
- Gives every district a piece of State Street, except for District 2

NDC Plan 101

City of Santa Barbara
2021/22 Redistricting



Total Population Deviation: 6.5%
District 1 Latino CVAP: 49%
District 3 Latino CVAP: 41%

Santa Barbara Airport in District 5

©2017 CALIPER

National Demographics Corporation, January 1, 2022

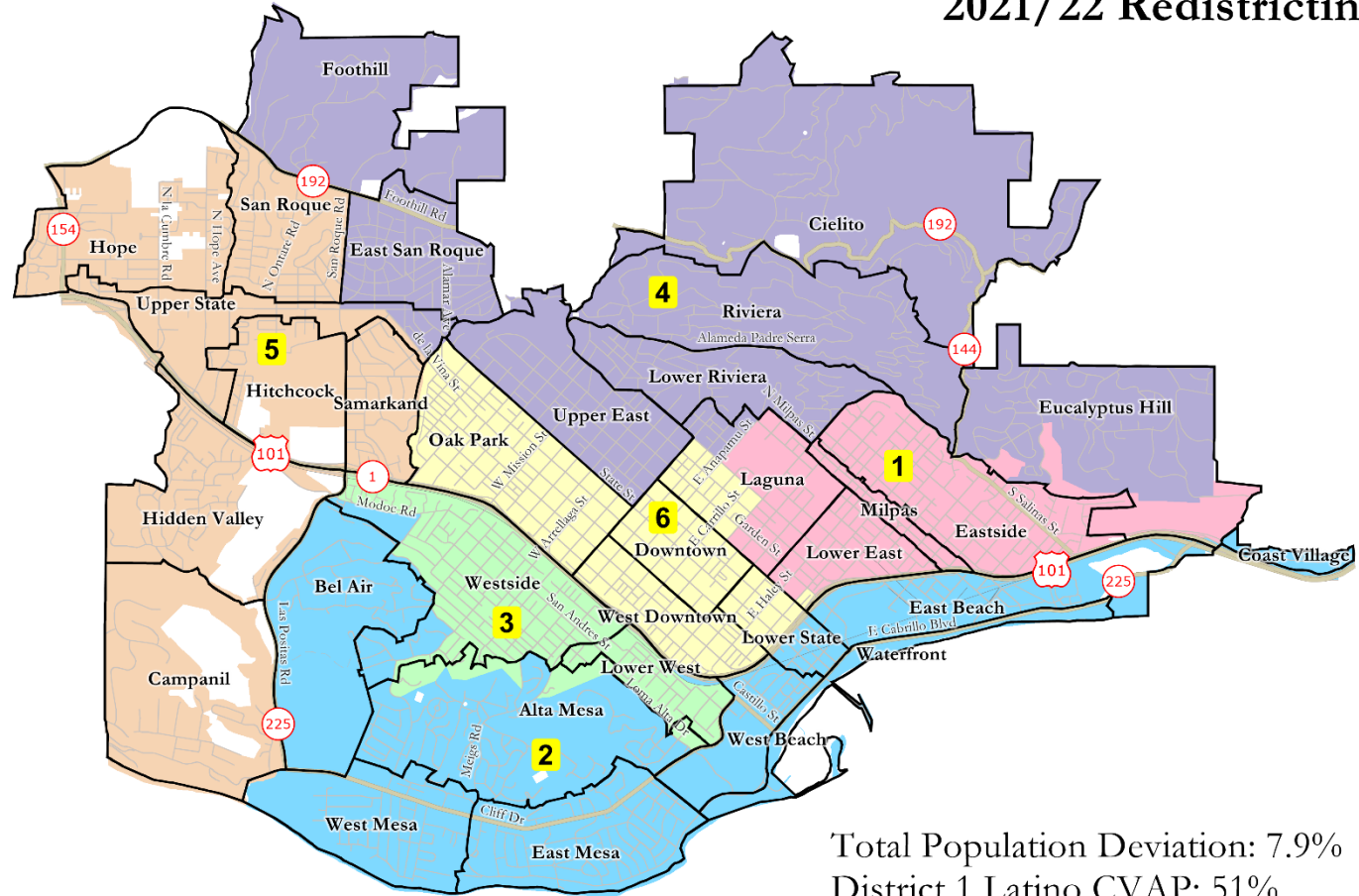
Maps of NDC Draft Plans

Key Features

- Moderate change from the current plan
- District 1 shifts east, away from State St., taking in Laguna
- District 3 shifts west, away from State St., taking in almost all of the Westside
- District 2 shifts east to take in the entire waterfront area out to Coast Village
- District 6 now includes the whole Central Business District, and less of Laguna

NDC Plan 102

City of Santa Barbara
2021/22 Redistricting



Total Population Deviation: 7.9%
District 1 Latino CVAP: 51%
District 3 Latino CVAP: 40%

Santa Barbara Airport in District 5

©2017 CALIPER

National Demographics Corporation, January 1, 2022

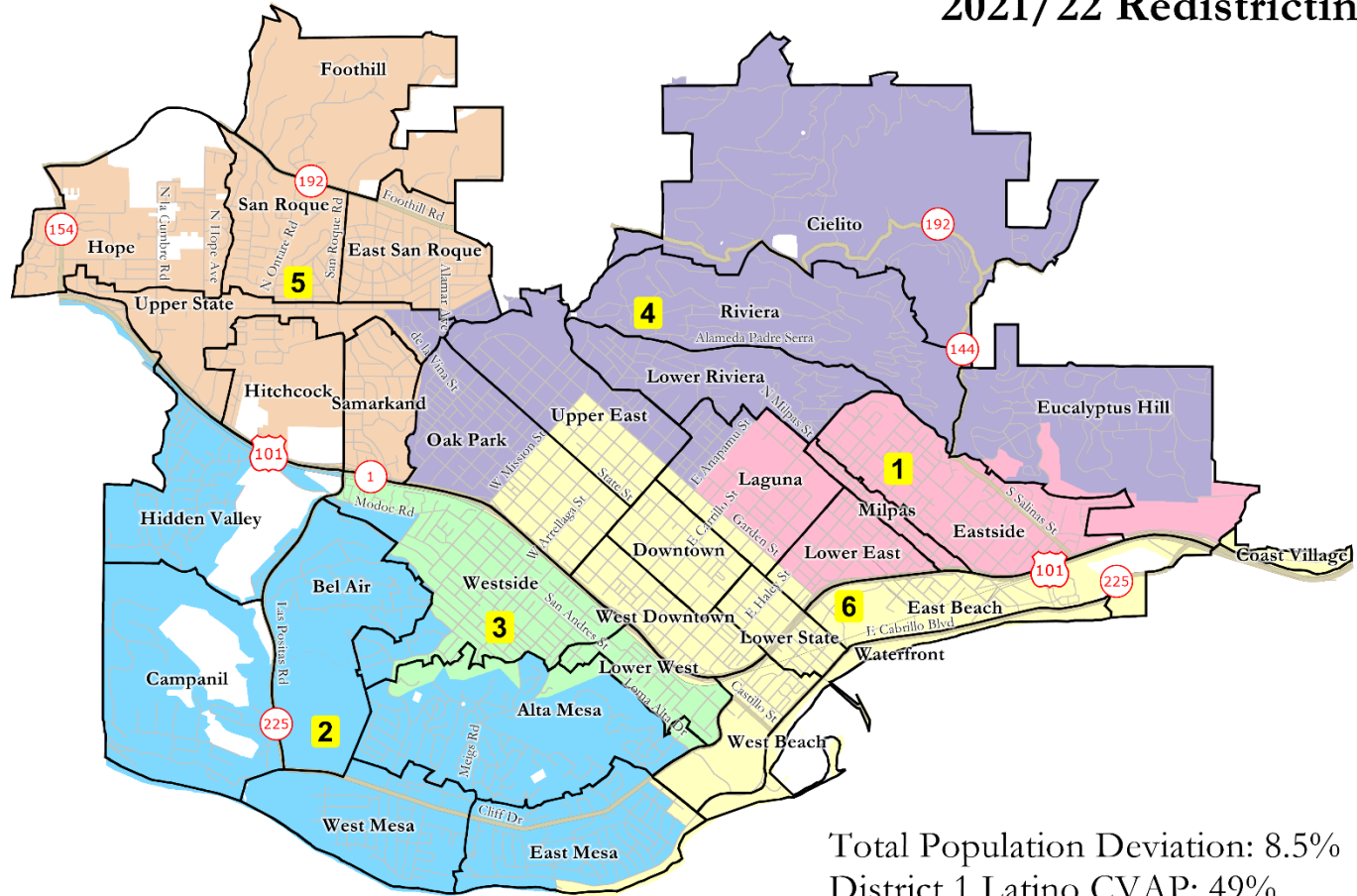
Maps of NDC Draft Plans

Key Features

- ❑ Significant change from the current plan
- ❑ District 1 shifts east, away from State St., taking in Laguna
- ❑ District 3 shifts west, away from State St., taking in almost all of the Westside
- ❑ District 2 shifts west to take in all of southwestern S.B.
- ❑ District 5 shifts north to take in all of northwestern S.B.
- ❑ District 6 loses area north of Mission St. to gain the waterfront

NDC Plan 103

City of Santa Barbara
2021/22 Redistricting



Total Population Deviation: 8.5%
District 1 Latino CVAP: 49%
District 3 Latino CVAP: 40%

Santa Barbara Airport in District 2

©2017 CALIPER

National Demographics Corporation, January 1, 2022

Analysis of NDC Draft Plans

NDC Plan 101

- ❑ Population deviation: 6.5%
- ❑ District 1 Latino CVAP: 49%
- ❑ District 3 Latino CVAP: 41%
- ❑ All six districts are contiguous
- ❑ Significantly splits the neighborhoods of Laguna, West Downtown, Lower State, and the Westside
- ❑ Significantly splits the potential C.O.I.'s of the Central Business District, the Historic District, the waterfront area, and greater San Roque
- ❑ Tend to follow boundaries of neighborhoods or major streets and highways
- ❑ District 5 may not be compact

NDC Plan 102

- ❑ Population deviation: 7.9%
- ❑ District 1 Latino CVAP: 51%
- ❑ District 3 Latino CVAP: 40%
- ❑ All six districts are contiguous
- ❑ Significantly splits the neighborhoods of Laguna and Lower State, but unites West Downtown and the Westside
- ❑ Significantly splits the potential C.O.I.'s of the Historic District and greater San Roque, but not the other two (do they in fact benefit from having one rep.?)
- ❑ Tend to follow boundaries of neighborhoods or major streets and highways
- ❑ Districts 2 and 5 may not be

NDC Plan 103

- ❑ Population deviation: 8.5%
- ❑ District 1 Latino CVAP: 49%
- ❑ District 3 Latino CVAP: 40%
- ❑ All six districts are contiguous
- ❑ Unites all four of those neighborhoods, but splits Oak Park and Upper East (though follows major streets to do so)
- ❑ Unites all four of those potential C.O.I.'s, plus the hilly areas south of Hwy 101, though at the expense of splitting the high fire risk area
- ❑ Tend to follow boundaries of neighborhoods or major streets and highways
- ❑ District 6 may not be compact

Public Hearing & Discussion

- ❑ Questions about the proposed redistricting plans?
- ❑ Which plan do you prefer?
- ❑ What, if anything, would you like to see revised in your preferred plan?
- ❑ Please refer to the [Interactive Review Map](#) for a detailed look at each plan