

# **Site Accessibility Evaluation**

## **Americans with Disabilities Act**

### **And**

## **Title 24 And Part 2 - California Building Code**



**Central Library**  
**40 E Anapamu St**  
**Santa Barbara Downtown, CA 93101**  
**Accessibility Evaluation**  
**Inspection Date: 08/16/2023**  
**Inspectors: Scott Saddlemire**

Prepared By



**SALLY SWANSON**  
**ARCHITECTS, INC.**

**(415) 308 - 6555**

**Report Date: 11/03/2023**

**Table of Contents**

---

<b>Findings</b>	<b>3</b>
<b>Parking</b>	<b>3</b>
<b>Accessible Routes</b>	<b>3</b>
<b>Basement Floor</b>	<b>15</b>
<b>Child Library</b>	<b>15</b>
<b>Unisex Restrooms in Child Area</b>	<b>22</b>
<b>Restrooms Towards Staff Area</b>	<b>30</b>
<b>First Floor</b>	<b>36</b>
<b>Faulkner Gallery</b>	<b>36</b>
<b>Entrance Vestibule</b>	<b>51</b>
<b>Library</b>	<b>55</b>
<b>Patio Area</b>	<b>68</b>
<b>Adult Literacy</b>	<b>69</b>
<b>Second Floor</b>	<b>73</b>
<b>Library</b>	<b>73</b>

## Parking: Accessible Routes

### Finding: 1

This is the wrong use of detectable warnings

They do not cover the entire zero curb area. They need to be at the edge of the vehicle way.

#### Citation:

2010 ADAS Section: Advisory

2022 CBC 11B Section: Advisory

#### As Built:

wrong use for detectable warnings

#### Budgeting Range:

\$0 - \$0.00

### Recommendation:

N/A - Refer to Finding



## Parking: Accessible Routes

### Finding: 2

Lower push plate is missing for the automatic door.

At each location where push plates are provided there shall be two push plates; the centerline of one push plate shall be 7 inches minimum and 8 inches maximum above the floor or ground surface and the centerline of the second push plate shall be 30 inches minimum and 44 inches maximum above the floor or ground surface. Each push plate shall be a minimum of 4 inches diameter or a minimum of 4 inches by 4 inches square and shall display the International Symbol of Accessibility.

**Citation:**

2022 CBC 11B Section:  
11B-404.2.9 Exception: c

**As Built:**

Install when alterations are  
made

**Budgeting Range:**

\$0 - \$0.00

**Recommendation:**

N/A - Refer to Finding



## Parking: Accessible Routes

### Finding: 3

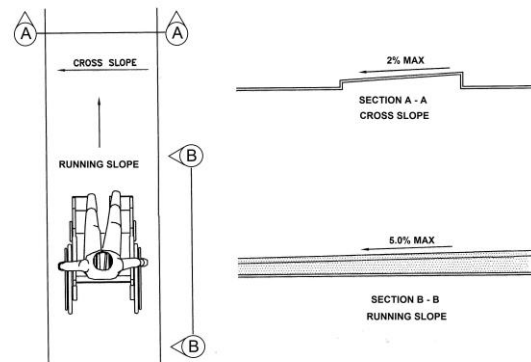
The accessible path of travel between the building entrance and the accessible parking has cross slopes greater than 2%.

Surface cross slopes shall not exceed 1 unit vertical in 48 units horizontal (2-percent slope).

Citation:	As Built:	Budgeting Range:
2010 ADAS Section: 403.3	N/A	\$2,500 - \$9,500.00
2022 CBC 11B Section: 11B-403.3		

### Recommendation:

N/A - Refer to Finding



**Finding: 3 Additional Finding Photos**





## Parking: Accessible Routes

### Finding: 4

The walkway contains abrupt vertical edges and/or variations over 1/4 inch.

1/4 inch is the maximum vertical rise. Changes in level between 1/4 inch and 1/2 inch must be beveled at 1:2 or less.

Changes in level greater than 1/2 inch must be by way of a ramp.

#### Citation:

2010 ADAS Section: 303.3, 303.2

2022 CBC 11B Section:  
11B-303.2, 11B-303.3

#### As Built:

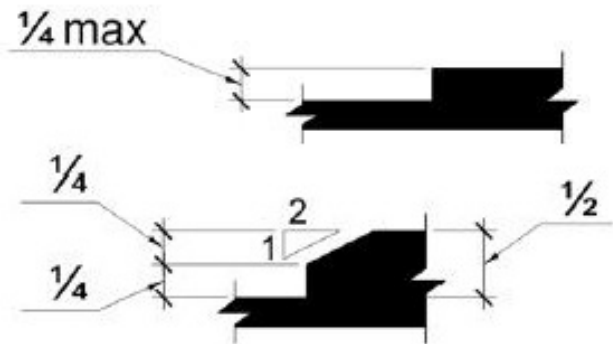
Walkway (accessible route) from  
parking to entrance

#### Budgeting Range:

\$1,500 - \$4,500.00

#### Recommendation:

N/A - Refer to Finding



**Finding: 4 Additional Finding Photos**





## Parking: Accessible Routes

### Finding: 5

The ramp run and landing do not have compliant/required edge protection.

A curb, or barrier shall be provided that prevents the passage of a 4 inch diameter sphere, where any portion of the sphere is within 4 inches of the finish floor or ground surface. To prevent wheel entrapment, the curb or barrier shall provide a continuous and uninterrupted barrier along the length of the ramp.

#### Citation:

2022 CBC 11B Section:  
11B-405.9.2

#### As Built:

chair wheel guade rail

#### Budgeting Range:

\$0 - \$0.00

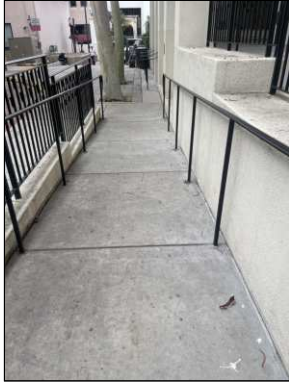
#### Recommendation:

To prevent wheel entrapment, the curb or barrier shall provide a continuous and uninterrupted barrier along the length of the ramp.

Install wheel guide at the bottom of the vertical supports



**Finding: 5 Additional Finding Photos**



## Parking: Accessible Routes

### Finding: 6

The directional signs required are not provided.

Signs required by Chapter 10 Directional Signage, to provide directions to accessible means of egress shall comply with requirements for visual characters.

**Citation:**

2022 CBC 11B Section:  
11B-216.4.3

**As Built:**

N/A

**Budgeting Range:**

\$0 - \$0.00

**Recommendation:**

N/A - Refer to Finding



**Finding: 6 Additional Finding Photos**



## Parking: Accessible Routes

### Finding: 7

An identification sign identifying that this entrance is not accessible and directional signage pointing to the accessible entrance is required.

When a directional sign is required, it should be located to minimize backtracking. In some cases, this could mean locating a sign at the beginning of a route, not just at the inaccessible entrances to a building.

**Citation:**

2010 ADAS Section: 216.6

**As Built:**

N/A

**Budgeting Range:**

\$0 - \$0.00

2022 CBC 11B Section:  
11B-216.6

**Recommendation:**

N/A - Refer to Finding



**Finding: 7 Additional Finding Photos**





## Basement Floor: Child Library

### Finding: 8

The drinking fountain is noncompliant.

The water flow shall be activated by a manually operated system that is front mounted or side mounted and located within 6 inches of the front edge of the fountain or an electronically controlled device.

Spout outlets on wheelchair accessible fountains shall be 36 inches maximum above the finish floor or ground and be located 15 inches minimum from the vertical support and 5 inches maximum from the front edge of the unit, including bumpers.

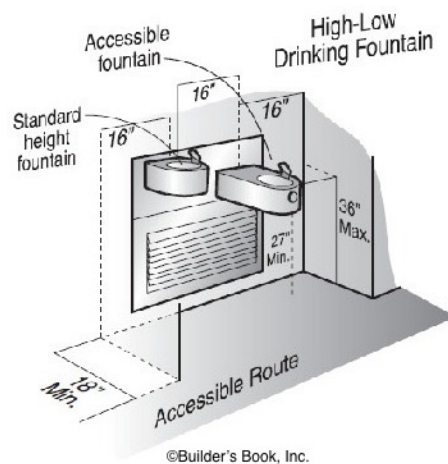
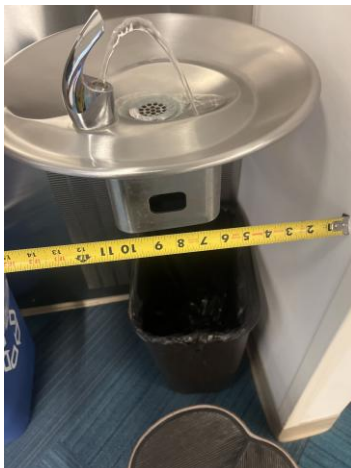
The spout shall provide a flow of water at least 4 inches high minimum and shall be located 5 inches maximum from the front of the unit. The angle of the water stream shall be measured horizontally relative to the front face of the unit.

Where spouts are located less than 3 inches of the front of the unit, the angle of the water stream shall be 30 degrees maximum. Where spouts are located between 3 inches and 5 inches maximum from the front of the unit, the angle of the water stream shall be 15 degrees maximum. On an accessible drinking fountain with a round or oval bowl, the spout must be positioned so the flow of water is within 3 inches of the front edge of the fountain.

Citation:	As Built:	Budgeting Range:
2022 CBC 11B Section: 11B-602.1, 11B-602.3, 11B-602.4, 11B-602.5	N/A	\$2,500 - \$6,500.00

### Recommendation:

See figure for requirements to the side of the alcove



## Basement Floor: Child Library

### Finding: 9

The clear floor space required at accessible drinking fountains is not positioned for a forward approach.

Units shall have a clear floor or ground space positioned for a forward approach and centered on the unit.

**Citation:**

2010 ADAS Section: 602.2

2022 CBC 11B Section:  
11B-602.2

**As Built:**

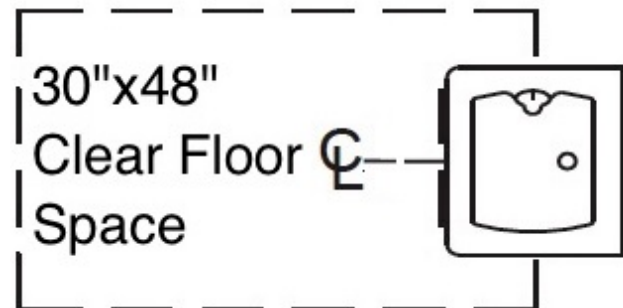
N/A

**Budgeting Range:**

\$1,500 - \$6,500.00

**Recommendation:**

Obstructed



## Basement Floor: Child Library

### Finding: 10

Compliant knee and toe clearance is not provided at the table.

When seating for persons in wheelchairs is provided at fixed tables or counters, knee spaces at least 27 inches high, 30 inches wide and 19 inches deep shall be provided.

#### Citation:

2022 CBC 11B Section:  
11B-902.2

#### As Built:

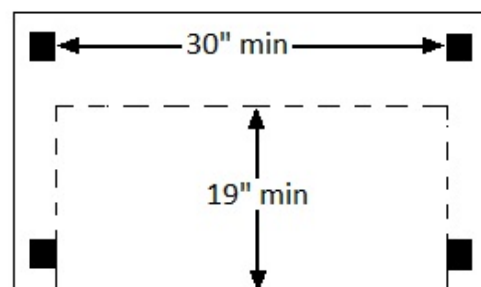
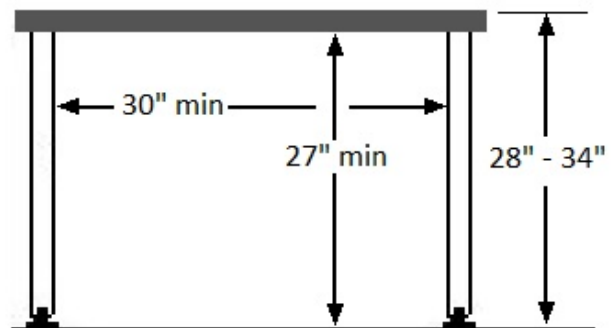
long coloring table is compliant,  
individual tables are not

#### Budgeting Range:

\$1,500 - \$6,500.00

#### Recommendation:

N/A - Refer to Finding



**Finding: 10 Additional Finding Photos**



## Basement Floor: Child Library

### Finding: 11

The handrail is not continuous the entire length of the ramp.

The handrail must be continuous. Handrails shall be placed on each side of each ramp, and shall be continuous the full length of the ramp. The inside handrail on switchback or dogleg ramps shall always be continuous.

Citation:	As Built:	Budgeting Range:
2010 ADAS Section: 505.3	N/A	\$500 - \$2,500.00
2022 CBC 11B Section: 11B-505.3		

### Recommendation:

There is a door in the middle of this ramp





## Basement Floor: Child Library

### Finding: 12

The element projects more than 4 inches into the circulation path.

Wall-mounted objects that have leading edges between 27 inches and 80 inches from the floor must not project more than 4 inches into the circulation path. Protruding objects that extend to the floor or within 27 inches of the floor are cane detectable and are therefore not hazardous. Where it is necessary or desirable to have objects protrude from the wall, a manner of cane detection must be provided.

#### Citation:

2010 ADAS Section: 307.2

#### As Built:

Typical throughout

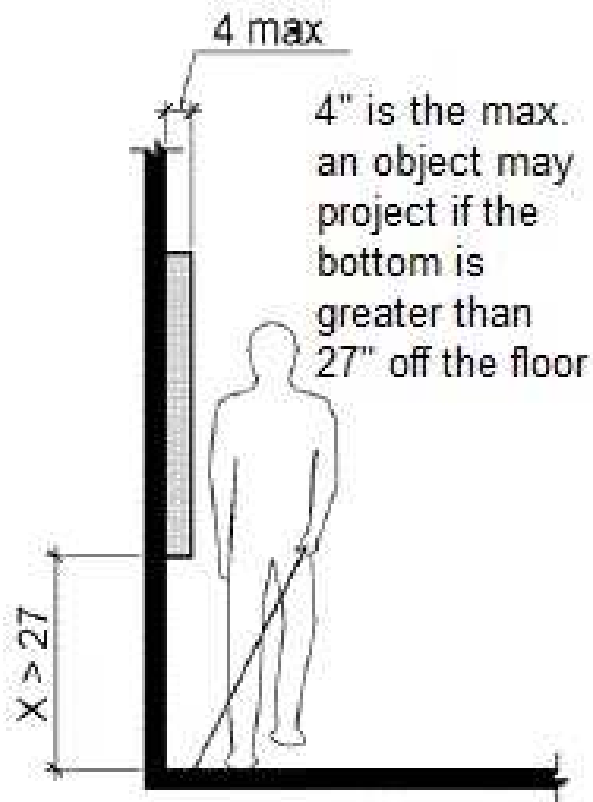
#### Budgeting Range:

\$150 - \$6,500.00

2022 CBC 11B Section:  
11B-307.2

#### Recommendation:

N/A - Refer to Finding





**Finding: 12 Additional Finding Photos**



## Basement Floor: Unisex Restrooms in Child Area

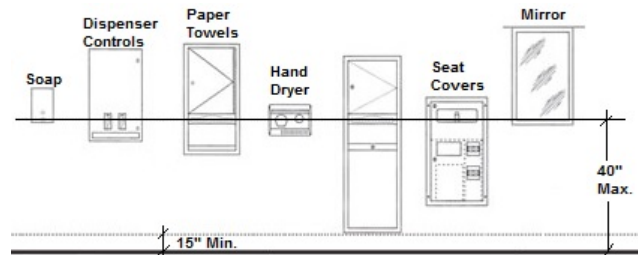
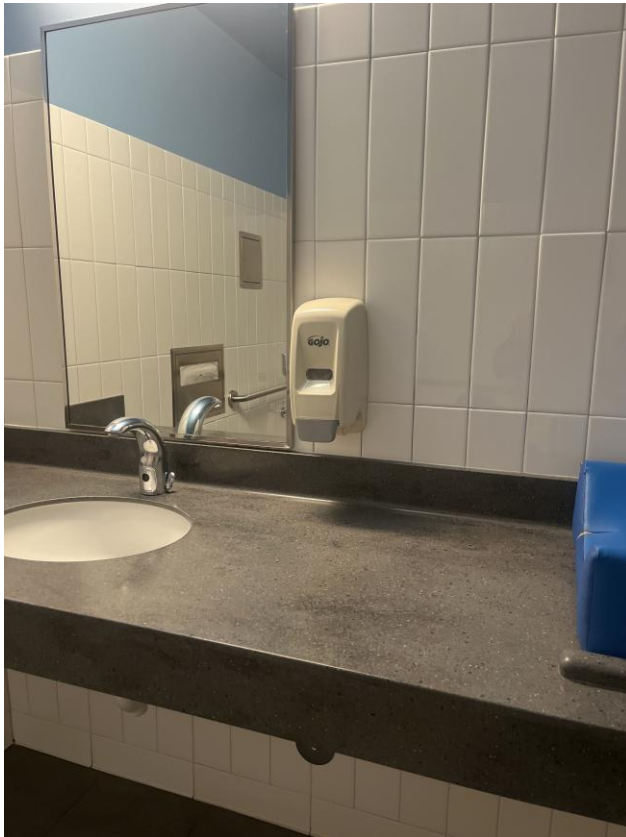
### Finding: 13

The soap dispenser is mounted too high.

Dispensers must have all operable parts a maximum of 40 inches above the floor.

Citation:	As Built:	Budgeting Range:
2022 CBC 11B Section: 11B-603.5	1/2" too high	\$150 - \$1,500.00

**Recommendation:**  
see figure



**Basement Floor: Unisex Restrooms in Child Area****Finding: 14**

The edges of the unisex geometric symbol for the room are not rounded, or chamfered.

Edges shall be eased or rounded at 1/16 inch minimum, or chamfered at 1/8 inch maximum. Vertices shall be radiused between 1/8 inch minimum and 1/4 inch maximum.

**Citation:**

2022 CBC 11B Section:  
11B-703.7.2.6.4

**As Built:**

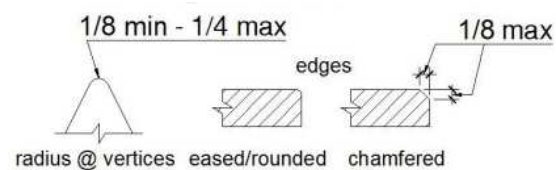
typical for both

**Budgeting Range:**

\$0 - \$0.00

**Recommendation:**

edges do not comply with current code



**Finding: 14 Additional Finding Photos**



## Basement Floor: Unisex Restrooms in Child Area

### Finding: 15

The coat hook is installed greater than 48 inches above the finished floor.

Where a forward reach is unobstructed, the high forward reach shall be 48 inches maximum above the finished floor.

**Citation:** **As Built:** **Budgeting Range:**

2010 ADAS Section: 308.2.1

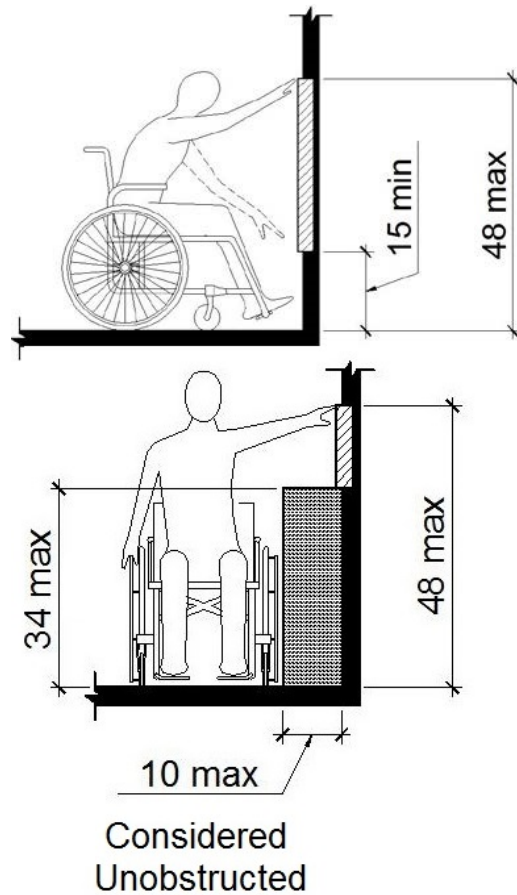
N/A

\$150 - \$1,500.00

2022 CBC 11B Section:  
11B-308.2.1

### Recommendation:

N/A - Refer to Finding



**Finding: 15 Additional Finding Photos**





## Basement Floor: Unisex Restrooms in Child Area

### Finding: 16

The edges of the unisex geometric symbol for the room are not rounded, or chamfered.

Edges shall be eased or rounded at 1/16 inch minimum, or chamfered at 1/8 inch maximum. Vertices shall be radiused between 1/8 inch minimum and 1/4 inch maximum.

#### Citation:

2022 CBC 11B Section:  
11B-703.7.2.6.4

#### As Built:

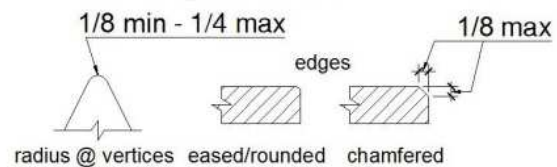
typical for both

#### Budgeting Range:

\$0 - \$0.00

#### Recommendation:

N/A - Refer to Finding



**Basement Floor: Unisex Restrooms in Child Area****Finding: 17**

The coat hook is installed greater than 48 inches above the finished floor.

Where a forward reach is unobstructed, the high forward reach shall be 48 inches maximum above the finished floor.

**Citation:** **As Built:** **Budgeting Range:**

2010 ADAS Section: 308.2.1

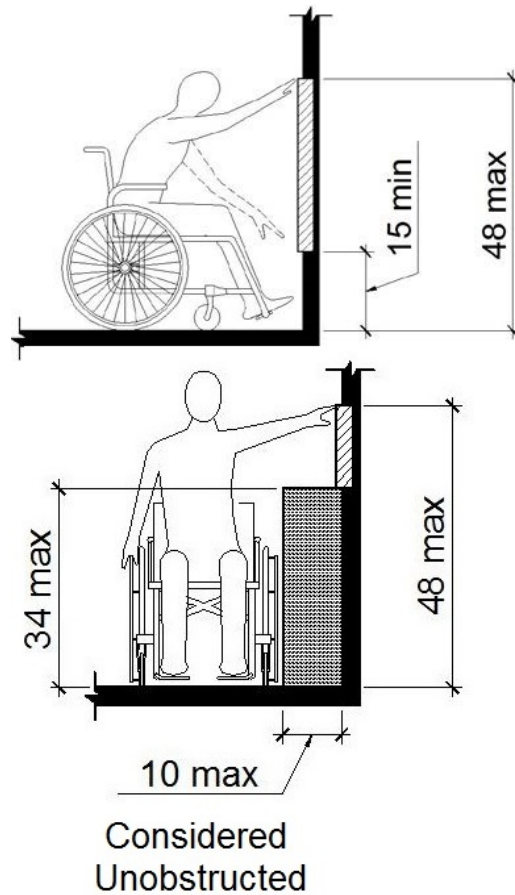
N/A

\$150 - \$1,500.00

2022 CBC 11B Section:  
11B-308.2.1

**Recommendation:**

N/A - Refer to Finding



**Finding: 17 Additional Finding Photos**



## Basement Floor: Restrooms Towards Staff Area

### Finding: 18

The unisex geometric sign for the room is missing.

A combined circle and triangle symbol shall be located at entrances to unisex toilet and bathing facilities. The combined circle and triangle symbol shall consist of a circle symbol 1/4 inch thick and 12 inches in diameter with a 1/4 inch (6.4 mm) thick equilateral triangle symbol superimposed on and geometrically inscribed within the 12-inch diameter of the circle symbol. The vertices of the triangle symbol shall be located 1/4 inch maximum from the edge of the circle symbol with a vertex pointed upward. The color of the triangle symbol shall contrast with the color of the circle symbol, either light on a dark background or dark on a light background. The color of the circle symbol shall contrast with the color of the door or surface on which the combined circle and triangle symbol is mounted, either light on a dark background or dark on a light background.

#### Citation:

2022 CBC 11B Section:  
11B-703.7.2.6.3

#### As Built:

Wall sign mounted on door

#### Budgeting Range:

\$25 - \$150.00

### Recommendation:

Install a compliant unisex door sign on the door and a compliant unisex wall sign on the wall, strike side of the door



## Basement Floor: Restrooms Towards Staff Area

### Finding: 19

The unisex geometric sign for the room is missing.

A combined circle and triangle symbol shall be located at entrances to unisex toilet and bathing facilities. The combined circle and triangle symbol shall consist of a circle symbol 1/4 inch thick and 12 inches in diameter with a 1/4 inch (6.4 mm) thick equilateral triangle symbol superimposed on and geometrically inscribed within the 12-inch diameter of the circle symbol. The vertices of the triangle symbol shall be located 1/4 inch maximum from the edge of the circle symbol with a vertex pointed upward. The color of the triangle symbol shall contrast with the color of the circle symbol, either light on a dark background or dark on a light background. The color of the circle symbol shall contrast with the color of the door or surface on which the combined circle and triangle symbol is mounted, either light on a dark background or dark on a light background.

#### Citation:

2022 CBC 11B Section:  
11B-703.7.2.6.3

#### As Built:

Wall sign is mounted on the  
door

#### Budgeting Range:

\$25 - \$150.00

#### Recommendation:

Install a complaint door sting on the door and a complaint wall sign on the strike side of the doo



## Basement Floor: Restrooms Towards Staff Area

### Finding: 20

A compliant room identification sign is missing on the strike side of the door.

Wall signs identifying permanent rooms and spaces of a building shall have be horizontal format and the characters raised 1/32 inch minimum and shall be sans serif uppercase characters a minimum of 5/8 inch and a maximum of 2 inches high. Contracted Grade 2 Braille shall be in a horizontal format and shall be placed a minimum of 3/8 inch and a maximum of 1/2 inch directly below the tactile characters; flush left or centered. Signs with raised characters or Braille shall be located a minimum of 48 inches above the finish floor or ground surface, measured from the baseline of the lowest line of Braille and 60 inches maximum above the finish floor or ground surface, measured from the baseline of the highest line of raised characters.

#### Citation:

2022 CBC 11B Section:  
11B-216.2

#### As Built:

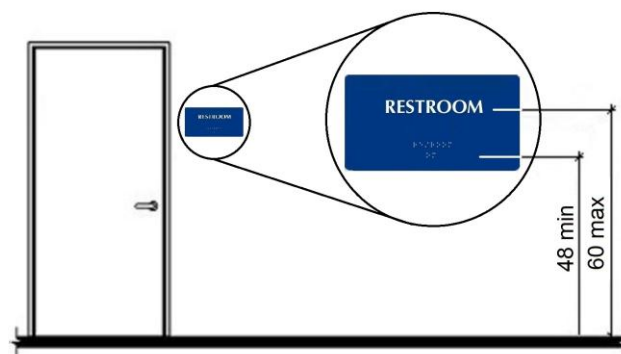
N/A

#### Budgeting Range:

\$25 - \$150.00

#### Recommendation:

N/A - Refer to Finding





## Basement Floor: Restrooms Towards Staff Area

### Finding: 21

A compliant room identification sign is missing on the strike side of the door.

Wall signs identifying permanent rooms and spaces of a building shall have be horizontal format and the characters raised 1/32 inch minimum and shall be sans serif uppercase characters a minimum of 5/8 inch and a maximum of 2 inches high. Contracted Grade 2 Braille shall be in a horizontal format and shall be placed a minimum of 3/8 inch and a maximum of 1/2 inch directly below the tactile characters; flush left or centered. Signs with raised characters or Braille shall be located a minimum of 48 inches above the finish floor or ground surface, measured from the baseline of the lowest line of Braille and 60 inches maximum above the finish floor or ground surface, measured from the baseline of the highest line of raised characters.

#### Citation:

2022 CBC 11B Section:  
11B-216.2

#### As Built:

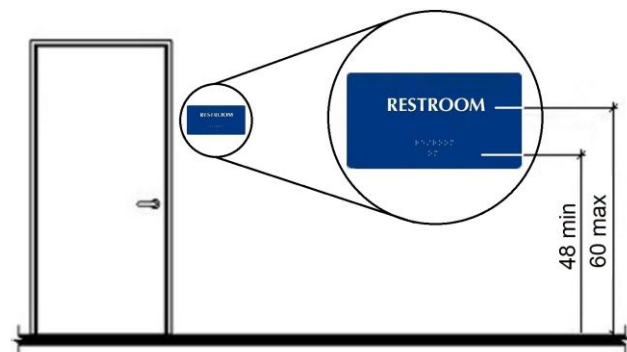
N/A

#### Budgeting Range:

\$25 - \$150.00

#### Recommendation:

N/A - Refer to Finding



## Basement Floor: Restrooms Towards Staff Area

### Finding: 22

The maneuvering clearance perpendicular to the door on the push side does not meet the minimum required dimension.

Maneuvering clearance at doors on the push side that are approached from the latch side must be 44 inches perpendicular to the door and the area adjacent to the latch side and in the same plane as the door must be unobstructed for a distance of 24 inches.

#### Citation:

2022 CBC 11B Section:  
11B-404.2.4.1

#### As Built:

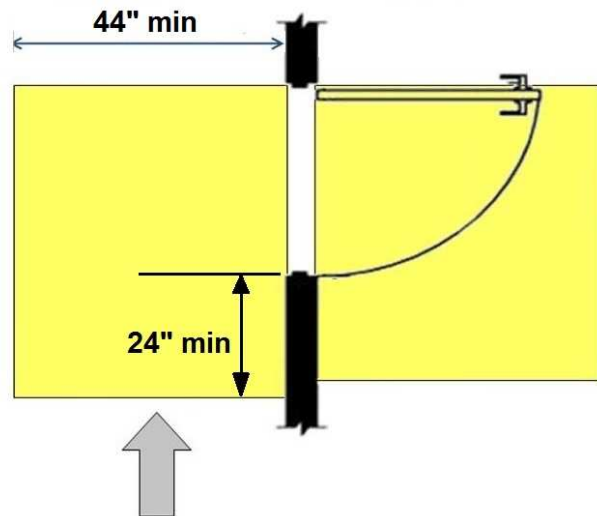
N/A

#### Budgeting Range:

\$1,500 - \$6,500.00

#### Recommendation:

N/A - Refer to Finding



**Finding: 22 Additional Finding Photos**



## First Floor: Faulkner Gallery

### Finding: 23

The maneuvering clearance at the door exceeds 2% slope.

Maneuvering clearance for interior doors on the pull side with a front approach must be flat (2% max. slope in any direction) for a minimum distance of 60 inches in the direction of travel. The width of the maneuvering clearance must be as wide as the door plus an additional 18 inches on the latch side. This latch side clearance must also be flat (2% max. slope in any direction) and clear of obstructions.

#### Citation:

2010 ADAS Section: 404.2.4.4

#### As Built:

South set of doors

#### Budgeting Range:

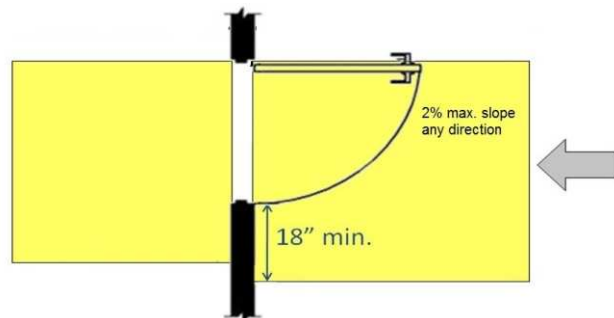
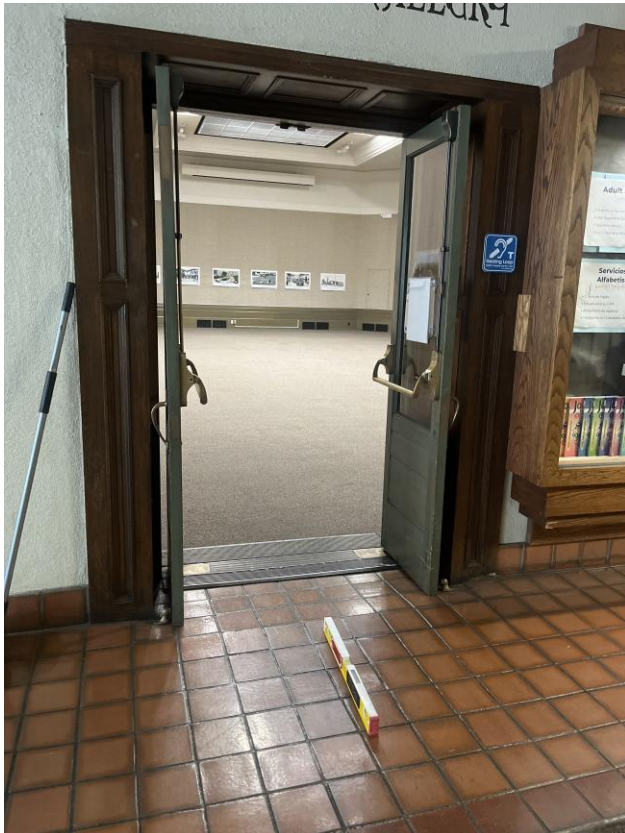
\$2,500 - \$6,500.00

2022 CBC 11B Section:

11B-404.2.4.4 Exceptions: 1

#### Recommendation:

N/A - Refer to Finding



**Finding: 23 Additional Finding Photos**



## First Floor: Faulkner Gallery

### Finding: 24

Neither leaf of the doorway provides at least 32 inches between the face of the door and the opposite stop.

At least one of the active leaves of doorways with two leaves shall comply with clear width and maneuvering clearance.

Door openings shall provide a clear width of 32 inches minimum. Clear openings of doorways with swinging doors shall be measured between the face of the door and the stop, with the door open 90 degrees.

#### Citation:

2010 ADAS Section: 404.2.3,  
404.2.2

#### As Built:

south set of doors

#### Budgeting Range:

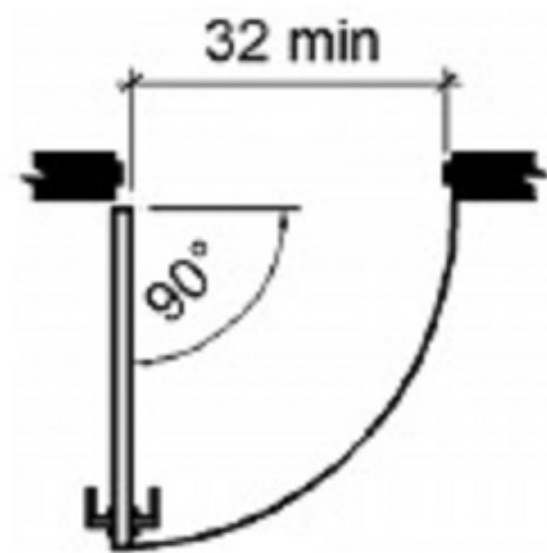
\$250 - \$1,500.00

#### 2022 CBC 11B Section:

11B-404.2.2, 11B-404.2.3

#### Recommendation:

N/A - Refer to Finding



Hinged Door or Gate

**Finding: 24 Additional Finding Photos**





## First Floor: Faulkner Gallery

### Finding: 25

The maneuvering clearance at the door exceeds 2% slope.

Maneuvering clearance for interior doors on the pull side with a front approach must be flat (2% max. slope in any direction) for a minimum distance of 60 inches in the direction of travel. The width of the maneuvering clearance must be as wide as the door plus an additional 18 inches on the latch side. This latch side clearance must also be flat (2% max. slope in any direction) and clear of obstructions.

#### Citation:

2010 ADAS Section: 404.2.4.4

#### As Built:

north set of doors

#### Budgeting Range:

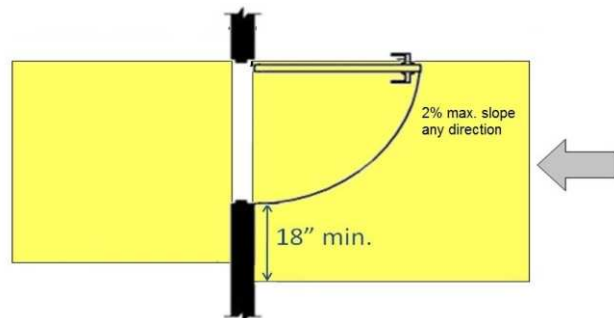
\$2,500 - \$6,500.00

2022 CBC 11B Section:

11B-404.2.4.4 Exceptions: 1

#### Recommendation:

N/A - Refer to Finding



**Finding: 25 Additional Finding Photos**



## First Floor: Faulkner Gallery

### Finding: 26

Neither leaf of the doorway provides at least 32 inches between the face of the door and the opposite stop.

At least one of the active leaves of doorways with two leaves shall comply with clear width and maneuvering clearance.

Door openings shall provide a clear width of 32 inches minimum. Clear openings of doorways with swinging doors shall be measured between the face of the door and the stop, with the door open 90 degrees.

#### Citation:

2010 ADAS Section: 404.2.3,  
404.2.2

#### As Built:

north set of doors

#### Budgeting Range:

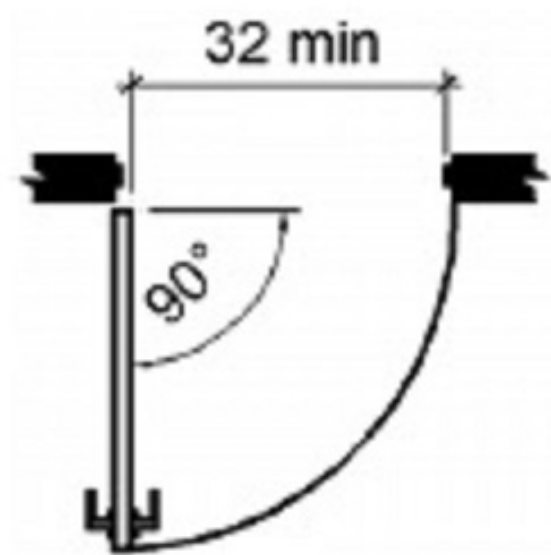
\$250 - \$1,500.00

#### 2022 CBC 11B Section:

11B-404.2.2, 11B-404.2.3

#### Recommendation:

N/A - Refer to Finding



Hinged Door or Gate

## First Floor: Faulkner Gallery

### Finding: 27

The door exceeds the maximum allowable opening force.

Doors shall have a maximum opening force of 5 pounds.

These forces do not apply to the force required to retract latch bolts or disengage other devices that hold the door or gate in a closed position. Door closers and gate closers shall be adjusted so that from an open position of 90 degrees, the time required to move the door to a position of 12 degrees from the latch is 5 seconds minimum.

#### Citation:

2022 CBC 11B Section:  
11B-404.2.9

#### As Built:

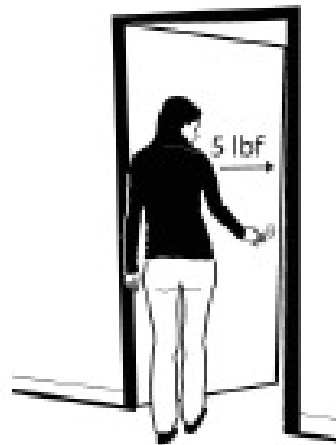
hits the ground

#### Budgeting Range:

\$25 - \$250.00

#### Recommendation:

N/A - Refer to Finding



## First Floor: Faulkner Gallery

### Finding: 28

There is no assistive listening system in the assembly area.

The minimum number of receivers to be provided shall be equal to 4 percent of the total number of seats, but in no case less than two. Twenty-five percent minimum of receivers provided, but no fewer than two, shall be hearing-aid compatible

**Citation:**

2022 CBC 11B Section:  
11B-219.2

**As Built:**

N/A

**Budgeting Range:**

\$0 - \$0.00

**Recommendation:**

Include signage stating assisted listening available





## First Floor: Faulkner Gallery

### Finding: 29

Compliant knee and toe clearance is not provided at the table.

When seating for persons in wheelchairs is provided at fixed tables or counters, knee spaces at least 27 inches high, 30 inches wide and 19 inches deep shall be provided.

#### Citation:

2022 CBC 11B Section:  
11B-902.2

#### As Built:

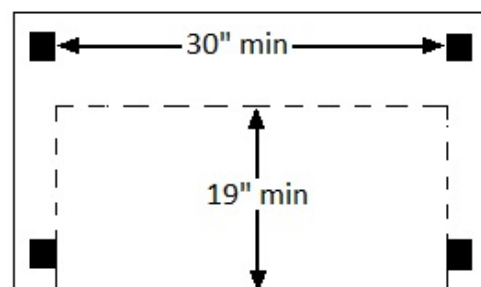
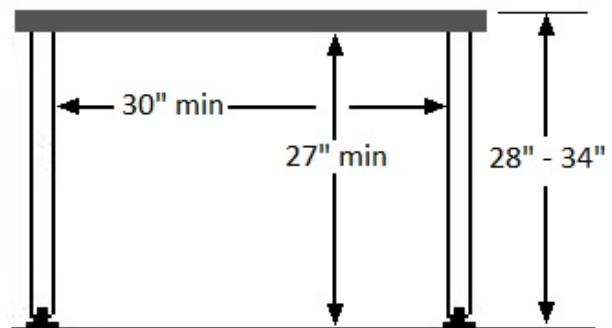
N/A

#### Budgeting Range:

\$1,500 - \$6,500.00

#### Recommendation:

N/A - Refer to Finding



**Finding: 29 Additional Finding Photos**





## First Floor: Faulkner Gallery

### Finding: 30

Compliant knee and toe clearance is not provided at the table.

When seating for persons in wheelchairs is provided at fixed tables or counters, knee spaces at least 27 inches high, 30 inches wide and 19 inches deep shall be provided.

**Citation:**

2022 CBC 11B Section:  
11B-902.2

**As Built:**

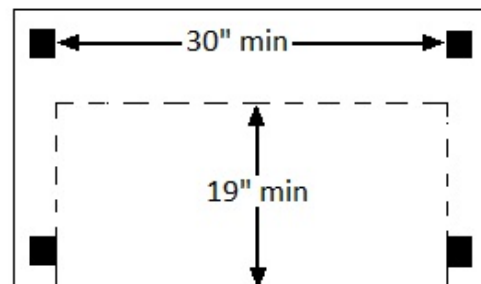
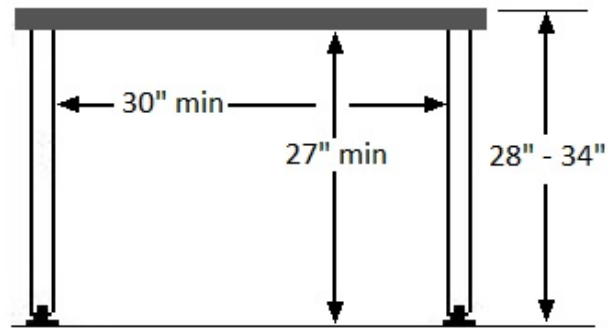
N/A

**Budgeting Range:**

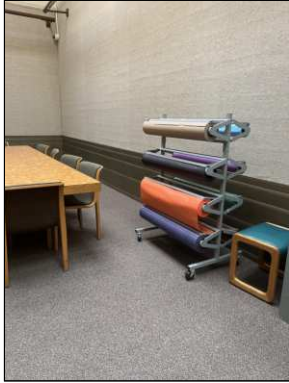
\$1,500 - \$6,500.00

**Recommendation:**

N/A - Refer to Finding



**Finding: 30 Additional Finding Photos**



## First Floor: Faulkner Gallery

### Finding: 31

The maneuvering space between the two doors in the vestibule is noncompliant.

The distance between two hinged or pivoted doors in series shall be 48 inches minimum plus the width of doors or gates swinging into the space.

#### Citation:

2010 ADAS Section: 404.2.6

#### As Built:

N/A

#### Budgeting Range:

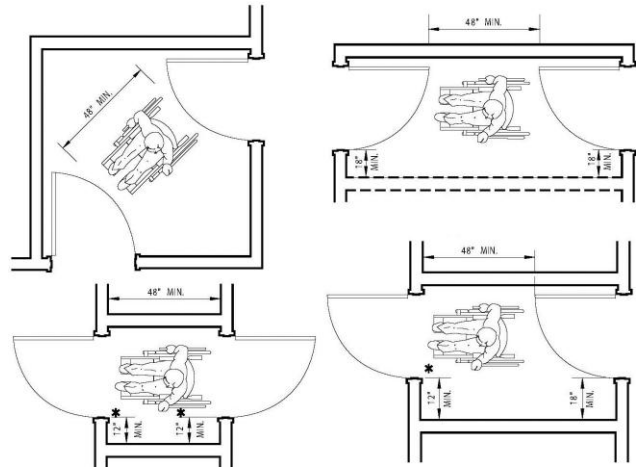
\$2,500 - \$15,000.00

#### 2022 CBC 11B Section:

11B-404.2.6

#### Recommendation:

N/A - Refer to Finding



**Finding: 31 Additional Finding Photos**



## First Floor: Entrance Vesibule

### Finding: 32

There is no drinking fountain for standing persons.

No fewer than two drinking fountains shall be provided. One drinking fountain shall meet requirements for wheelchair accessibility and one drinking fountain shall meet requirements for standing persons.

Where a single drinking fountain complies with both wheelchair accessibility and requirements for standing persons, it shall be permitted to be substituted for two separate drinking fountains.

Spout outlets of drinking fountains for standing persons shall be 38 inches minimum and 43 inches maximum above the finish floor or ground.

#### Citation:

2010 ADAS Section: 602.7, 211.2

#### As Built:

no standing fountain

#### Budgeting Range:

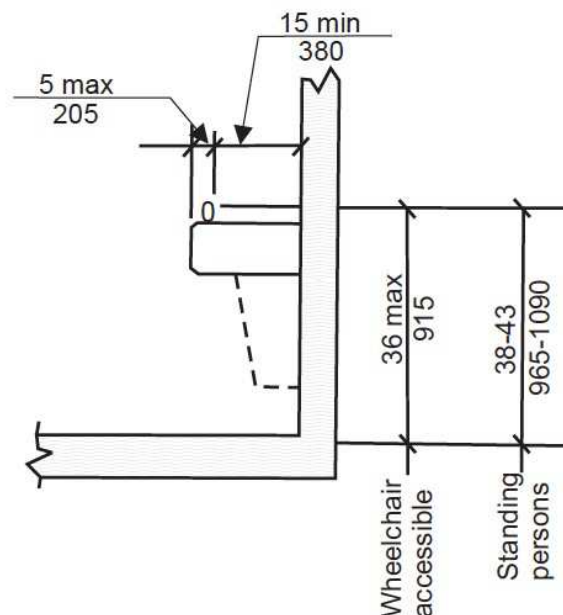
\$2,500 - \$6,500.00

2022 CBC 11B Section:

11B-211.2, 11B-602.7

#### Recommendation:

N/A - Refer to Finding





## First Floor: Entrance Vesibule

### Finding: 33

There is not enough knee clearance under the drinking fountain.

The drinking fountain must have a clear knee space between the bottom of the drinking fountain and the floor not less than 27 inches in height, 30 inches in width, and 8 inches in depth.

#### Citation:

2010 ADAS Section: 602.2

2022 CBC 11B Section:  
11B-602.2

#### As Built:

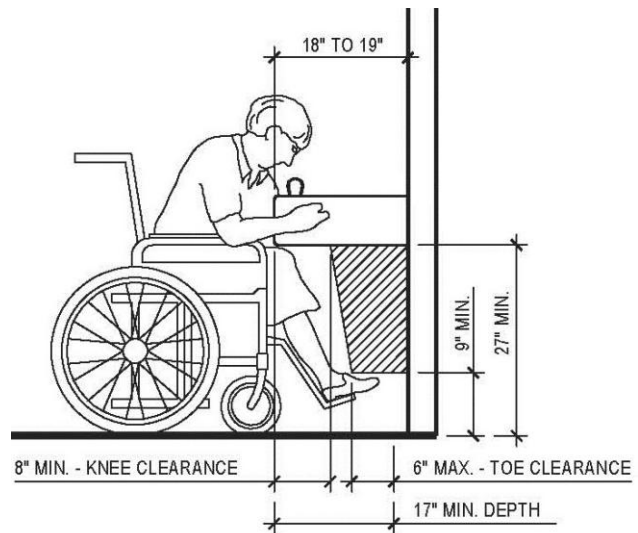
too low

#### Budgeting Range:

\$1,500 - \$4,500.00

#### Recommendation:

see figure



**Finding: 33 Additional Finding Photos**





## First Floor: Entrance Vesibule

### Finding: 34

The element projects more than 4 inches into the circulation path.

Wall-mounted objects that have leading edges between 27 inches and 80 inches from the floor must not project more than 4 inches into the circulation path. Protruding objects that extend to the floor or within 27 inches of the floor are cane detectable and are therefore not hazardous. Where it is necessary or desirable to have objects protrude from the wall, a manner of cane detection must be provided.

#### Citation:

2010 ADAS Section: 307.2

#### As Built:

no high fountain

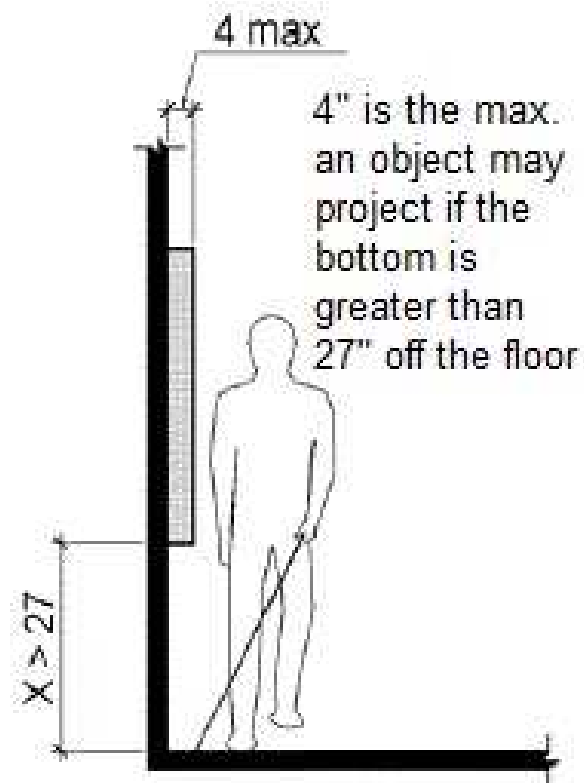
#### Budgeting Range:

\$150 - \$6,500.00

2022 CBC 11B Section:  
11B-307.2

#### Recommendation:

Once a complaint Hi/low drinking fountain is installed, ensure that the protruding drinking fountain is cane detectable



## First Floor: Library

### Finding: 35

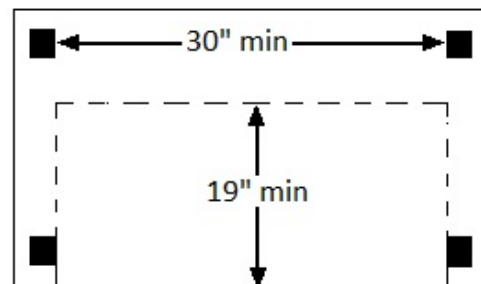
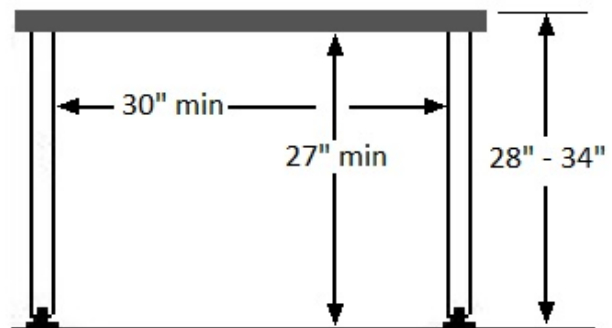
Compliant knee and toe clearance is not provided at the table.

When seating for persons in wheelchairs is provided at fixed tables or counters, knee spaces at least 27 inches high, 30 inches wide and 19 inches deep shall be provided.

Citation:	As Built:	Budgeting Range:
2022 CBC 11B Section: 11B-902.2	12 tables 4 with checker boards	\$1,500 - \$6,500.00

### Recommendation:

Install 5% compliant tables in each area and use



**Finding: 35 Additional Finding Photos**



## First Floor: Library

### Finding: 36

The library book stacks are too high. Book stacks available for public use shall be 54 inches maximum above the finish floor.

#### EXCEPTIONS:

1. Book stacks available for public use may be higher than 54 inches maximum above the finish floor when an attendant is available to assist persons with disabilities.
2. Book stacks restricted to employee use are not required to comply with these requirements.

#### Citation:

2022 CBC 11B Section:  
11B-225.2.3

#### As Built:

N/A

#### Budgeting Range:

\$0 - \$0.00

### Recommendation:

Information Only

See exceptions



**Finding: 36 Additional Finding Photos**





## First Floor: Library

### Finding: 37

The element is out of the maximum allowable reach range for a side approach.

Where a clear floor or ground space allows a parallel approach to an element and the side reach is unobstructed, the high side reach shall be 48 inches maximum to the finished floor.

#### Citation:

2010 ADAS Section: 308.3.1

#### As Built:

self serve book check out

#### Budgeting Range:

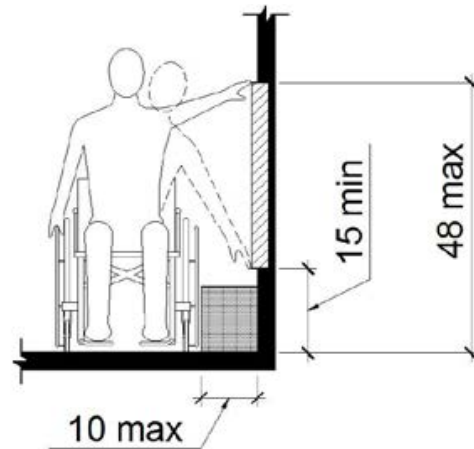
\$150 - \$1,500.00

2022 CBC 11B Section:

11B-308.3.1

#### Recommendation:

N/A - Refer to Finding



**Finding: 37 Additional Finding Photos**





## First Floor: Library

### Finding: 38

The element projects more than 4 inches into the circulation path.

Wall-mounted objects that have leading edges between 27 inches and 80 inches from the floor must not project more than 4 inches into the circulation path. Protruding objects that extend to the floor or within 27 inches of the floor are cane detectable and are therefore not hazardous. Where it is necessary or desirable to have objects protrude from the wall, a manner of cane detection must be provided.

#### Citation:

2010 ADAS Section: 307.2

#### As Built:

N/A

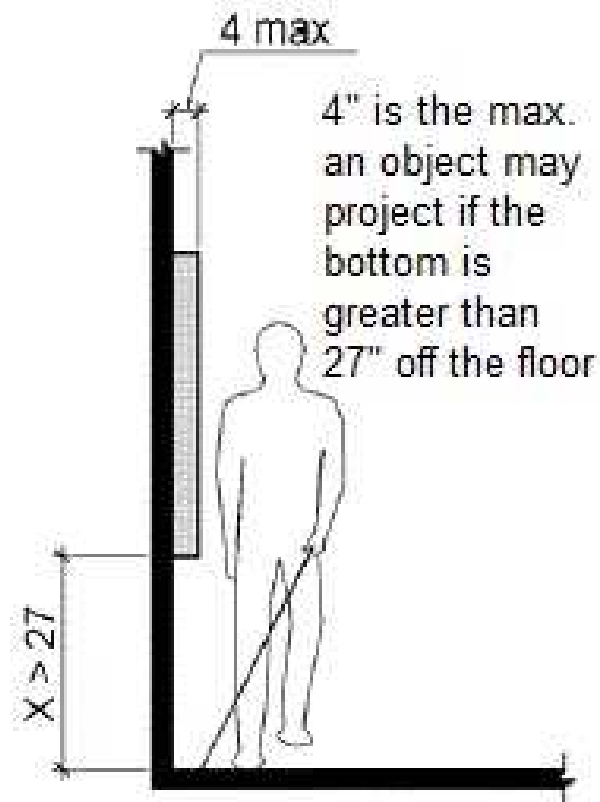
#### Budgeting Range:

\$150 - \$6,500.00

2022 CBC 11B Section:  
11B-307.2

#### Recommendation:

N/A - Refer to Finding



**Finding: 38 Additional Finding Photos**



## First Floor: Library

### Finding: 39

The handrail does not have a compliant extension at the bottom of the stair flight.

At the bottom of a stair flight, handrails shall extend at the slope of the stair flight for a horizontal distance equal to one tread depth beyond the last riser nosing. The horizontal extension of a handrail (not including the curved portion of round handrails) shall be 12 inches long minimum and a height equal to that of the sloping portion of the handrail as measured above the stair nosings. Extension shall return to a wall, guard, or the landing surface, or shall be continuous to the handrail of an adjacent stair flight.

#### Citation:

2022 CBC 11B Section:  
11B-505.10.3

#### As Built:

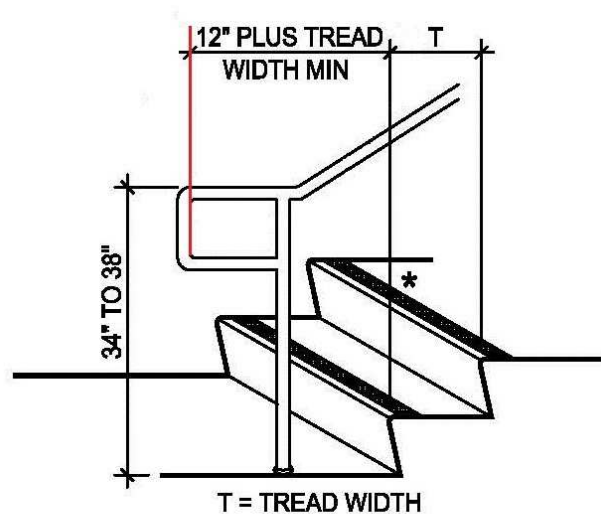
N/A

#### Budgeting Range:

\$1,500 - \$4,500.00

#### Recommendation:

N/A - Refer to Finding



Full length of extension must be  
**HORIZONTAL**

## First Floor: Library

### Finding: 40

The handrail does not have a compliant extension at the bottom of the stair flight.

At the bottom of a stair flight, handrails shall extend at the slope of the stair flight for a horizontal distance equal to one tread depth beyond the last riser nosing. The horizontal extension of a handrail (not including the curved portion of round handrails) shall be 12 inches long minimum and a height equal to that of the sloping portion of the handrail as measured above the stair nosings. Extension shall return to a wall, guard, or the landing surface, or shall be continuous to the handrail of an adjacent stair flight.

#### Citation:

2022 CBC 11B Section:  
11B-505.10.3

#### As Built:

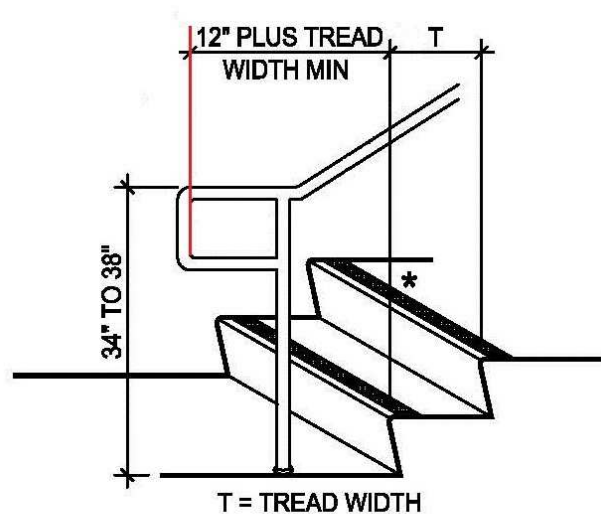
Typical

#### Budgeting Range:

\$1,500 - \$4,500.00

#### Recommendation:

N/A - Refer to Finding



Full length of extension must be  
**HORIZONTAL**

## First Floor: Library

### Finding: 41

The handrail extensions do not begin directly above the first nosing.

At the top of a stair flight, handrails shall extend horizontally above the landing for 12 inches minimum beginning directly above the first riser nosing. Extensions shall return to a wall, guard, or the landing surface, or shall be continuous to the handrail of an adjacent stair flight.

#### Citation:

2010 ADAS Section: 505.10.2

#### As Built:

Typical

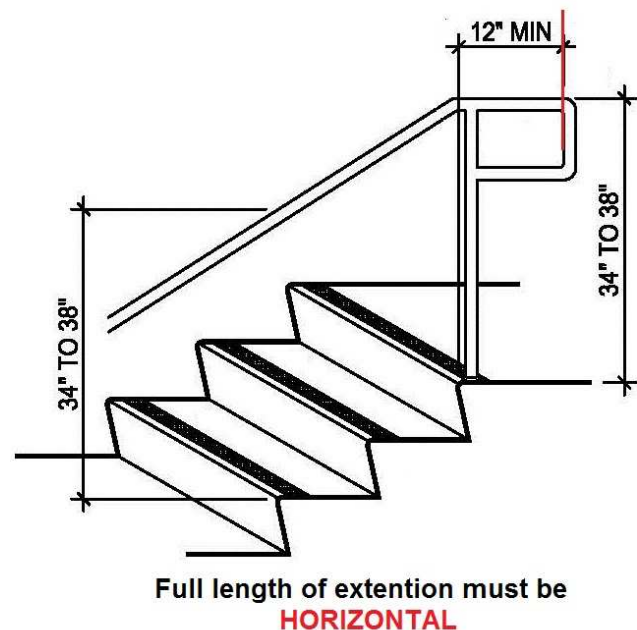
#### Budgeting Range:

\$0 - \$0.00

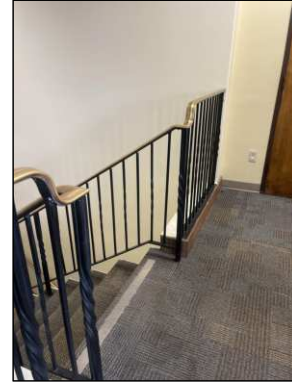
2022 CBC 11B Section:  
11B-505.10.2

#### Recommendation:

N/A - Refer to Finding



**Finding: 41 Additional Finding Photos**





## First Floor: Library

### Finding: 42

A tactile EXIT sign is missing at the door.

Wall signs identifying exits shall have characters raised 1/32 inch minimum and shall be uppercase characters a minimum of 5/8 inch and a maximum of 2 inches high. Braille shall be placed directly below the tactile characters; flush left or centered. Signs shall be located a minimum of 48 inches above floor, measured from the baseline of the lowest line of Braille and 60 inches maximum above the finish floor or ground surface, measured from the baseline of the highest line of raised characters.

Where a tactile sign is provided at a door, the sign shall be located at the latch side. Where a tactile sign is provided at double door the sign shall be located to the right of the right hand door. Where there is no wall space at the latch side of a single door or at the right side of double doors, signs shall be located on the nearest adjacent wall.

#### Citation:

2022 CBC 11B Section:  
11B-216.4.1

#### As Built:

braille exit route and exit signs

#### Budgeting Range:

\$25 - \$150.00

#### Recommendation:

Typical Throughout





## First Floor: Patio Area

### Finding: 43

This area along with a large interior area was under construction during the site visit.  
Recommend having an evaluation completed once construction is complete

**Citation:**

2010 ADAS Section: Advisory

**As Built:**

Area under construction

**Budgeting Range:**

\$0 - \$0.00

2022 CBC 11B Section: Advisory

**Recommendation:**

N/A - Refer to Finding



## First Floor: Adult Literacy

### Finding: 44

The maneuvering clearance on the pull side of the door extends less than 18 inches beyond the latch side of the door.

Maneuvering space for interior doors on the pull side with a front approach must be flat (2% max. slope in any direction) for a minimum distance of 60 inches in the direction of travel. The width of the maneuvering space must be as wide as the door plus an additional 18 inches on the latch side. This latch side clearance must also be flat (2% max. slope in any direction) and clear of obstructions.

#### Citation:

2010 ADAS Section: 404.2.4.1

#### As Built:

N/A

#### Budgeting Range:

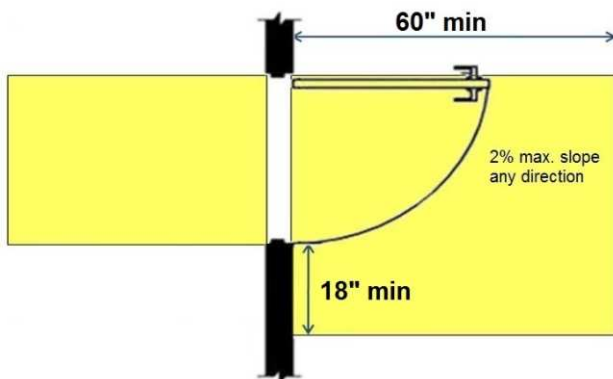
\$2,500 - \$6,500.00

#### 2022 CBC 11B Section:

11B-404.2.4.1

#### Recommendation:

N/A - Refer to Finding



## First Floor: Adult Literacy

### Finding: 45

A compliant room identification sign is missing on the strike side of the door.

Wall signs identifying permanent rooms and spaces of a building shall have be horizontal format and the characters raised 1/32 inch minimum and shall be sans serif uppercase characters a minimum of 5/8 inch and a maximum of 2 inches high. Contracted Grade 2 Braille shall be in a horizontal format and shall be placed a minimum of 3/8 inch and a maximum of 1/2 inch directly below the tactile characters; flush left or centered. Signs with raised characters or Braille shall be located a minimum of 48 inches above the finish floor or ground surface, measured from the baseline of the lowest line of Braille and 60 inches maximum above the finish floor or ground surface, measured from the baseline of the highest line of raised characters.

#### Citation:

2022 CBC 11B Section:  
11B-216.2

#### As Built:

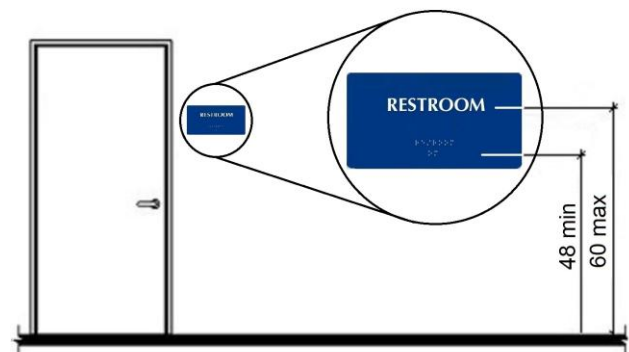
N/A

#### Budgeting Range:

\$25 - \$150.00

#### Recommendation:

N/A - Refer to Finding



**Finding: 45 Additional Finding Photos**



## First Floor: Adult Literacy

### Finding: 46

The lavatory's clear floor space obstructed by the trash can.

The wall mounted trash can projects (XX) from the wall and encroaches into the required 30 inches by 48 inches clear floor space. The maximum projection that a dispenser may project at this location is (XX) inches.

#### Citation:

2010 ADAS Section: 606.2

#### As Built:

N/A

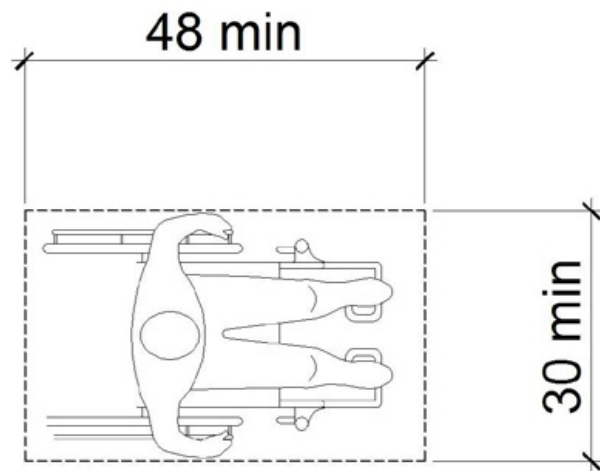
#### Budgeting Range:

\$0 - \$0.00

2022 CBC 11B Section:  
11B-606.2

#### Recommendation:

N/A - Refer to Finding





## Second Floor: Library

### Finding: 47

The total number of drinking fountains are not equally divided between those that are accessible to wheelchair users and those that are available to standing persons.

Where more than two are provided, 50 percent of the total number of drinking fountains provided shall be accessible to wheelchair users and 50 percent available to standing persons.

Where 50 percent of the drinking fountains yields a fraction, 50 percent shall be permitted to be rounded up or down provided that all drinking fountains complies with either requirements for wheelchair users or standing persons.

#### Citation:

2010 ADAS Section: 211.3

#### As Built:

N/A

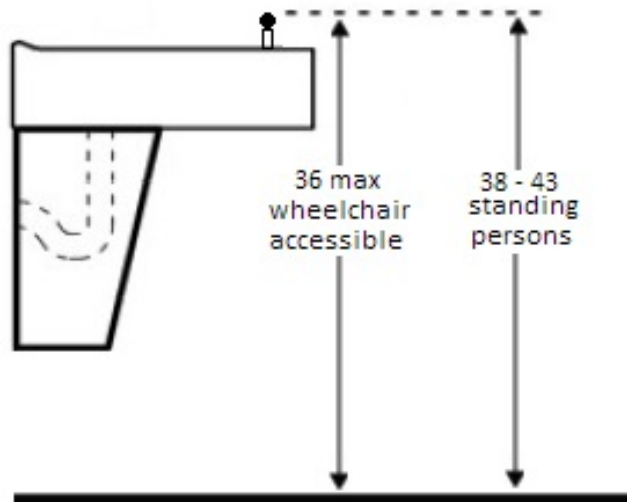
#### Budgeting Range:

\$2,500 - \$6,500.00

2022 CBC 11B Section:  
11B-211.3

#### Recommendation:

N/A - Refer to Finding



## Second Floor: Library

### Finding: 48

The element projects more than 4 inches into the circulation path.

Wall-mounted objects that have leading edges between 27 inches and 80 inches from the floor must not project more than 4 inches into the circulation path. Protruding objects that extend to the floor or within 27 inches of the floor are cane detectable and are therefore not hazardous. Where it is necessary or desirable to have objects protrude from the wall, a manner of cane detection must be provided.

#### Citation:

2010 ADAS Section: 307.2

#### As Built:

N/A

#### Budgeting Range:

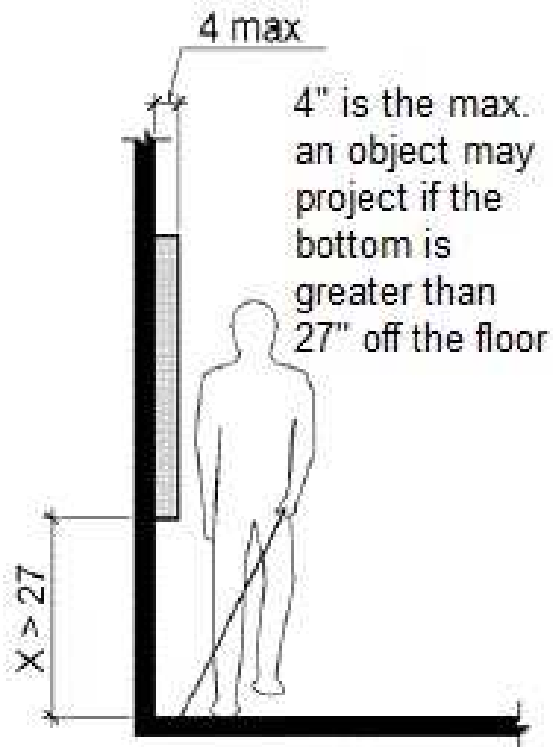
\$150 - \$6,500.00

2022 CBC 11B Section:  
11B-307.2

#### Recommendation:

When only a low drinking fountain is installed, and is set exactly at 27" to the bottom apron, then no cane detection is required.

If a Hi/low set of drinking fountains are set, then cane detection will required





## Second Floor: Library

### Finding: 49

All service counters must be a maximum 34" A.F.F.

A portion of the counter surface that is 36 inches long minimum and 34 inches high maximum above the finish floor shall be provided. A clear floor or ground space complying shall be positioned for a parallel approach adjacent to the 36 inch minimum length of counter.

**Citation:**

2022 CBC 11B Section:  
11B-904.4.1

**As Built:**

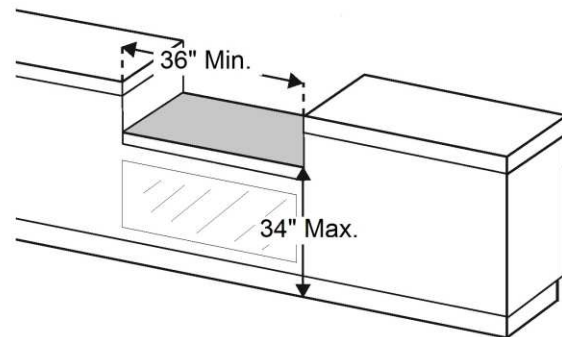
N/A

**Budgeting Range:**

\$1,500 - \$6,500.00

**Recommendation:**

N/A - Refer to Finding



**Finding: 49 Additional Finding Photos**



## Second Floor: Library

### Finding: 50

There is no accessible route between elements.

An accessible route of travel must connect all accessible elements and spaces within a building or facility.

**Citation:**

2010 ADAS Section: 206.2.4

2022 CBC 11B Section:  
11B-206.2.4

**As Built:**

no accessible route

**Budgeting Range:**

\$1,500 - \$6,500.00

**Recommendation:**

N/A - Refer to Finding



## Second Floor: Library

### Finding: 51

There are not enough accessible tables.

At least 5% of the seating in each functional area must be accessible. An accessible table must be on an accessible route (36 inches minimum) and have knee spaces at least 27 inches high, 30 inches wide and 19 inches deep. The tops of tables and counters must be 28 inches to 34 inches from the floor or ground.

#### Citation:

2022 CBC 11B Section:  
11B-226.1

#### As Built:

N/A

#### Budgeting Range:

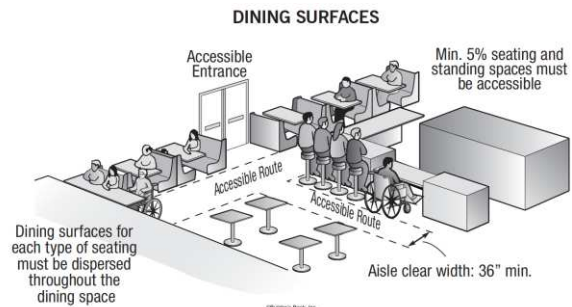
\$2,500 - \$9,500.00

#### Recommendation:

Typical through library

Each space needs to have the required number of accessible tables.

None provided



## Second Floor: Library

### Finding: 52

Compliant knee and toe clearance is not provided at the table.

When seating for persons in wheelchairs is provided at fixed tables or counters, knee spaces at least 27 inches high, 30 inches wide and 19 inches deep shall be provided.

**Citation:**

2022 CBC 11B Section:  
11B-902.2

**As Built:**

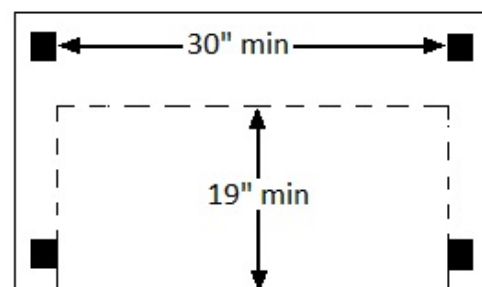
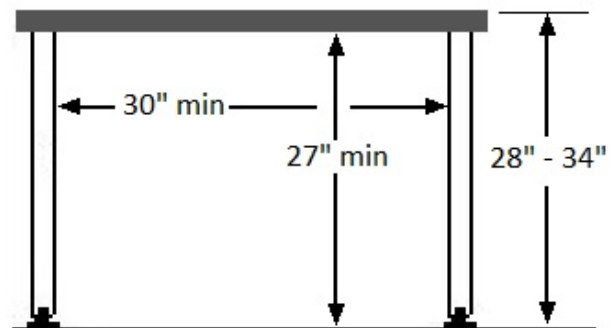
N/A

**Budgeting Range:**

\$1,500 - \$6,500.00

**Recommendation:**

N/A - Refer to Finding





**Finding: 52 Additional Finding Photos**



## Second Floor: Library

### Finding: 53

A compliant room identification sign is missing on the strike side of the door.

Wall signs identifying permanent rooms and spaces of a building shall be horizontal format and the characters raised 1/32 inch minimum and shall be sans serif uppercase characters a minimum of 5/8 inch and a maximum of 2 inches high. Contracted Grade 2 Braille shall be in a horizontal format and shall be placed a minimum of 3/8 inch and a maximum of 1/2 inch directly below the tactile characters; flush left or centered. Dots shall be 1/10 inch on center in each cell with 2/10-inch space between cells, measured from the second column of dots in the first cell to the first column of dots in the second cell. Dots shall be raised a minimum of 1/40 inch above the background. Braille dots shall be domed or rounded. Signs with raised characters or Braille shall be located a minimum of 48 inches above the finish floor or ground surface, measured from the baseline of the lowest line of Braille and 60 inches maximum above the finish floor or ground surface, measured from the baseline of the highest line of raised characters.

#### Citation:

2022 CBC 11B Section:  
11B-216.2

#### As Built:

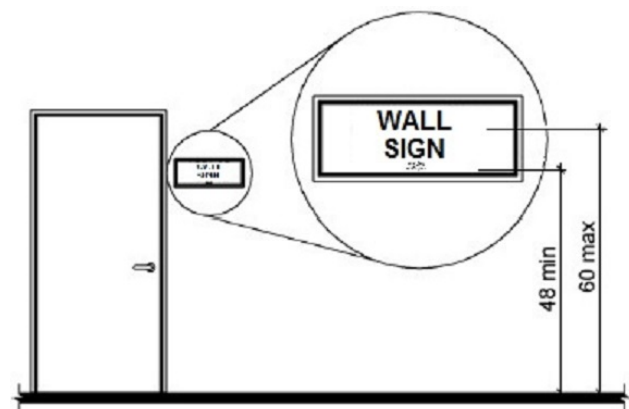
typical throughout

#### Budgeting Range:

\$25 - \$150.00

#### Recommendation:

All rooms that are identified, need to have a compliant room ID sign. Typical throughout





## Second Floor: Library

### Finding: 54

Compliant knee and toe clearance is not provided at the table.

When seating for persons in wheelchairs is provided at fixed tables or counters, knee spaces at least 27 inches high, 30 inches wide and 19 inches deep shall be provided.

#### Citation:

2022 CBC 11B Section:  
11B-902.2

#### As Built:

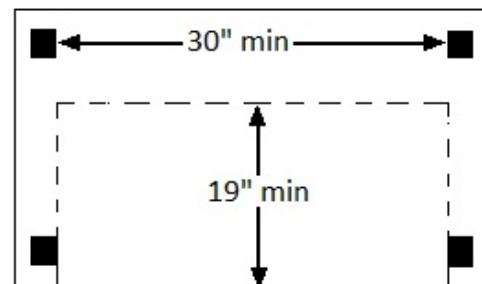
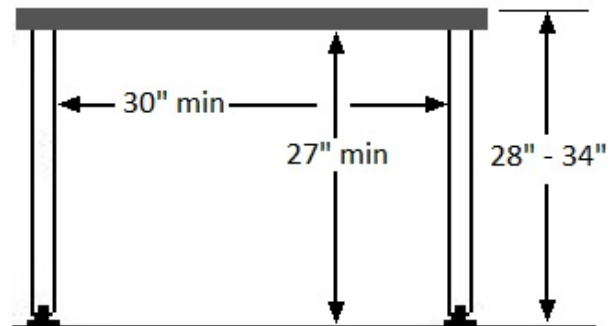
if used

#### Budgeting Range:

\$1,500 - \$6,500.00

#### Recommendation:

N/A - Refer to Finding



**Finding: 54 Additional Finding Photos**



## Second Floor: Library

### Finding: 55

The element projects more than 4 inches into the circulation path.

Wall-mounted objects that have leading edges between 27 inches and 80 inches from the floor must not project more than 4 inches into the circulation path. Protruding objects that extend to the floor or within 27 inches of the floor are cane detectable and are therefore not hazardous. Where it is necessary or desirable to have objects protrude from the wall, a manner of cane detection must be provided.

#### Citation:

2010 ADAS Section: 307.2

2022 CBC 11B Section:  
11B-307.2

#### As Built:

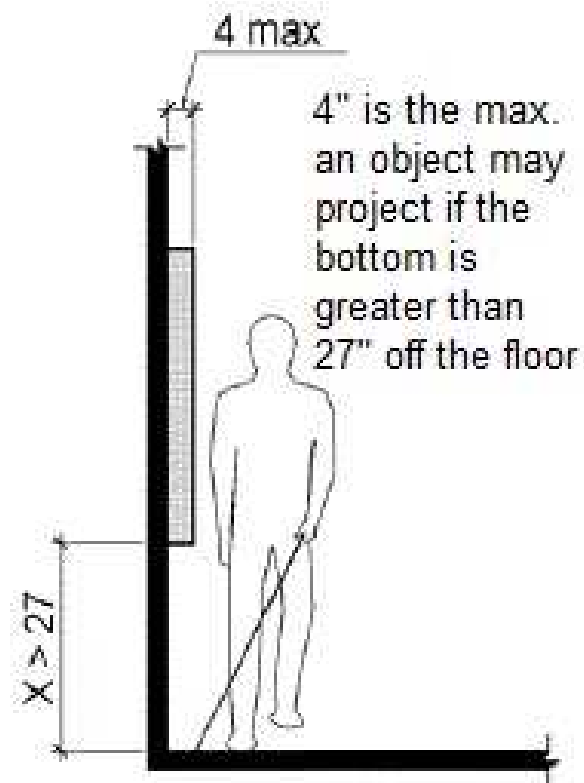
Compliant with cane detection at  
this time

#### Budgeting Range:

\$150 - \$6,500.00

### Recommendation:

If this table area is upgraded to meet the 27" min knee and toe requirements, then cane detection will need to be complaint



## Second Floor: Library

### Finding: 56

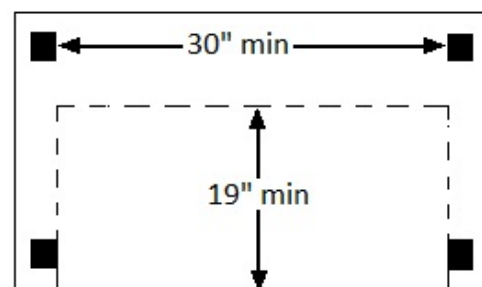
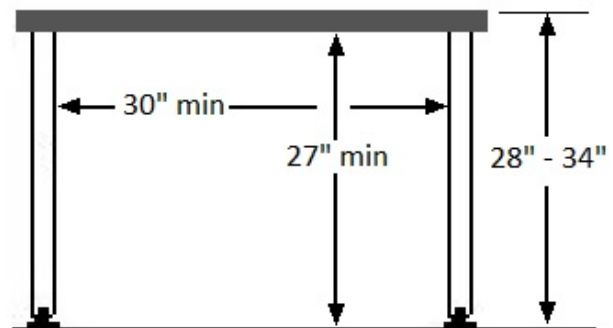
Compliant knee and toe clearance is not provided at the table.

When seating for persons in wheelchairs is provided at fixed tables or counters, knee spaces at least 27 inches high, 30 inches wide and 19 inches deep shall be provided.

Citation:	As Built:	Budgeting Range:
2022 CBC 11B Section: 11B-902.2	N/A	\$1,500 - \$6,500.00

### Recommendation:

N/A - Refer to Finding



**Finding: 56 Additional Finding Photos**





## Second Floor: Library

### Finding: 57

at the time of the evaluation, this area did not have any computers available at a compliant height

**Citation:**

2010 ADAS Section: Advisory

2022 CBC 11B Section: Advisory

**As Built:**

no low computers in this area

**Budgeting Range:**

\$0 - \$0.00

**Recommendation:**

N/A - Refer to Finding



## Second Floor: Library

### Finding: 58

The element projects more than 4 inches into the circulation path.

Wall-mounted objects that have leading edges between 27 inches and 80 inches from the floor must not project more than 4 inches into the circulation path. Protruding objects that extend to the floor or within 27 inches of the floor are cane detectable and are therefore not hazardous. Where it is necessary or desirable to have objects protrude from the wall, a manner of cane detection must be provided.

#### Citation:

2010 ADAS Section: 307.2

#### As Built:

N/A

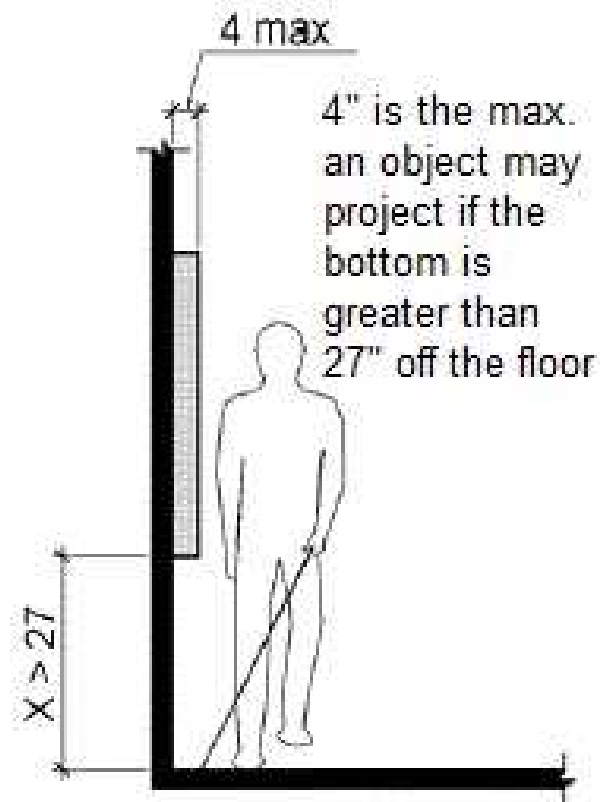
#### Budgeting Range:

\$150 - \$6,500.00

2022 CBC 11B Section:  
11B-307.2

#### Recommendation:

N/A - Refer to Finding





## Second Floor: Library

### Finding: 59

All service counters must be a maximum 34" A.F.F.

A portion of the counter surface that is 36 inches long minimum and 34 inches high maximum above the finish floor shall be provided. A clear floor or ground space complying shall be positioned for a parallel approach adjacent to the 36 inch minimum length of counter.

#### Citation:

2022 CBC 11B Section:  
11B-904.4.1

#### As Built:

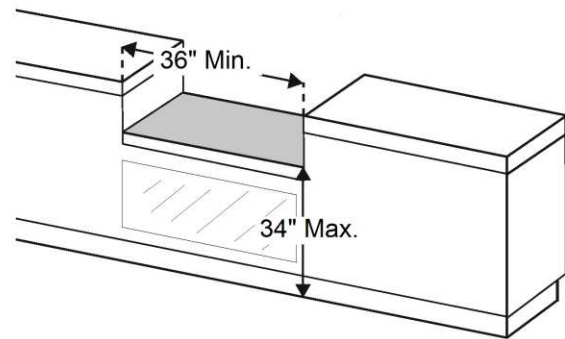
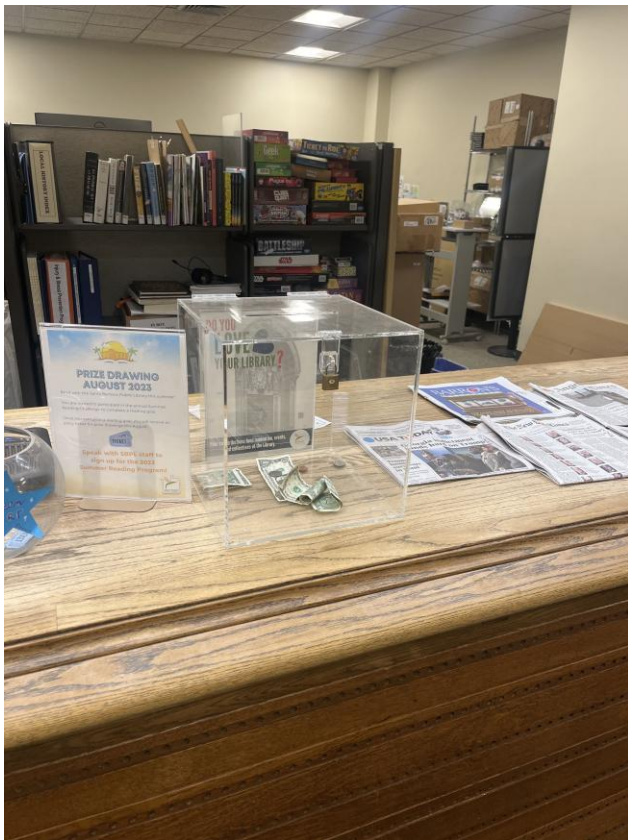
N/A

#### Budgeting Range:

\$1,500 - \$6,500.00

#### Recommendation:

N/A - Refer to Finding



**Finding: 59 Additional Finding Photos**



## Second Floor: Library

### Finding: 60

The element is not positioned correctly for either a side or front approach.

Where a clear floor or ground space allows a parallel or front approach and the side reach is unobstructed, the high side reach shall be 48 inches maximum above the finish floor or ground and the low side reach shall be 15 inches minimum above the finish floor or ground.

#### Citation:

2010 ADAS Section: 308.2.1,  
308.3.1

#### As Built:

reach range

#### Budgeting Range:

\$0 - \$0.00

#### Recommendation:

N/A - Refer to Finding

