



PROJECT TITLE:

Cliff Drive Utility Undergrounding – Salida del Sol to San Rafael Avenue

WHY THIS PROJECT?

The City has an allocation of \$2.5 million in undergrounding funds from Southern California Edison and the California Public Utilities Commission to underground overhead lines and remove utility poles on an arterial street. Undergrounding of utilities on Cliff Drive to the west was completed in 2011 and was selected based on a Citywide prioritization selection process. Cliff Drive is unique in its scenic streetscape, residential and commercial uses, and active transportation planning efforts.

PROJECT BENEFITS:

The project would place all existing overhead wires that supply electric and communication services underground from Salida de Sol to San Rafael Avenue. The poles to be removed are primarily located on the north/mountain side of the street. Benefits include the removal of ocean view obstructions, improved visual street appearance, and wider pedestrian access.

QUICK FACTS

Location: Cliff Drive – Salida del Sol to San Rafael Avenue

Design Schedule: 2022 to 2023

Construction Schedule: Completion by 2025 – 1 year maximum construction duration

Total Project Costs: \$2.5 million of Rule 20A Funds

Funding Source: California Public Utilities Commission Rule 20A “Rate Payer” Fund

CONTACT INFORMATION

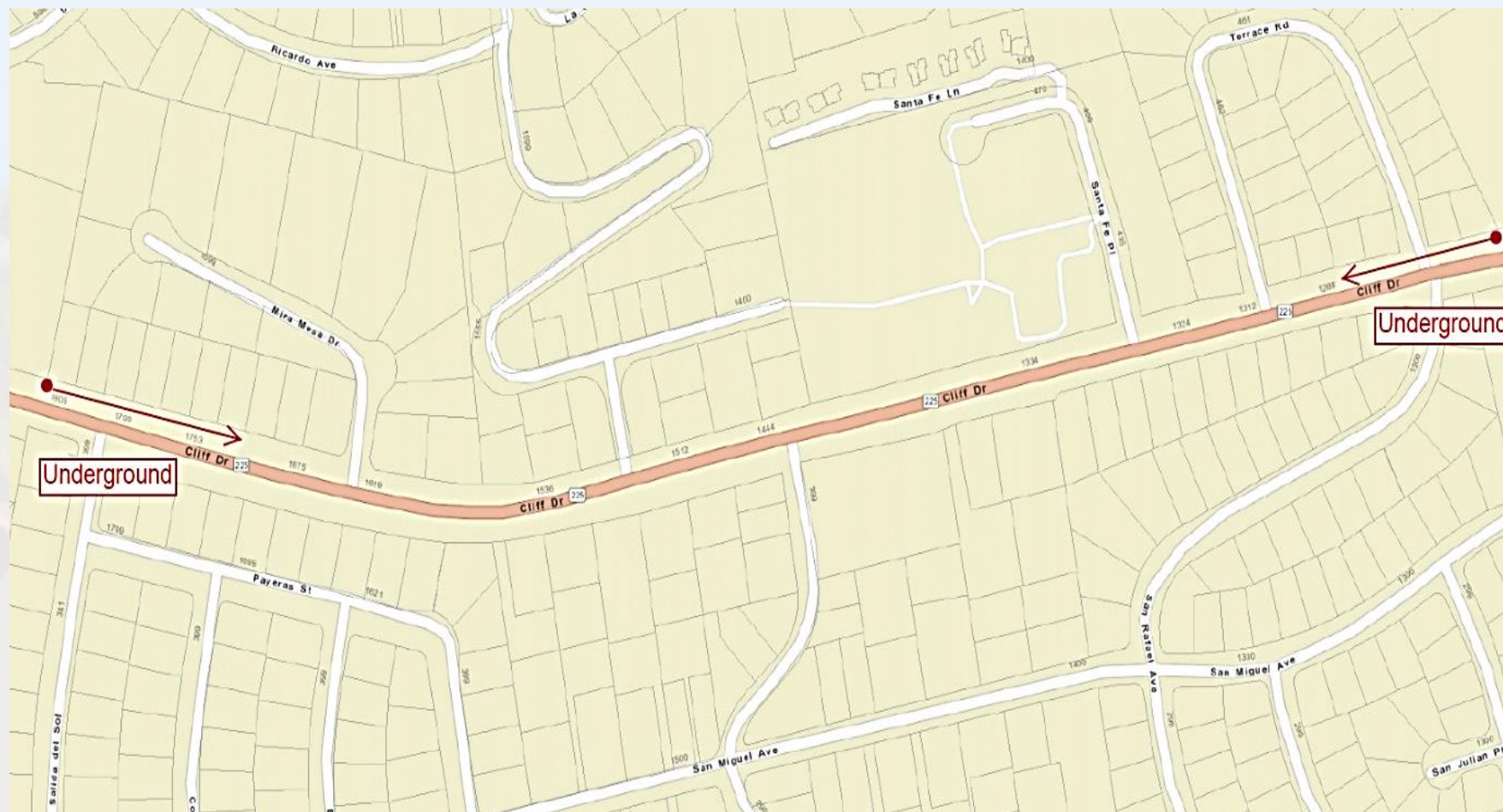
City Project Manager: Adam Hendel, Principal Engineer

Phone: (805) 897-1921

E-mail: ahendel@santabarbaraca.gov



Cliff Drive Near Salida del Sol – Looking Easterly at Poles to be Underground



Boundary Map of Poles/Wires To Be Placed Underground on Mountain Side



Cliff Drive Near Mira Mesa – Looking Westerly at Poles/Lines to be Underground



Same Location – Looking Towards Mountains



Example Underground Trenching Required Within Utility Easements - Softscape



Example Underground Trenching Required Within Utility Easements – Hardscape



Example “Blighted” Utility Pole And Traffic Safety Need



Streetscape and Ocean View Obstructions Near La Vista Del Oceano



Looking Westerly Near San Rafael Avenue – Improve Sidewalk Access



Example Underground Electric Meter – All Properties Within the Boundary on North Side of Cliff Drive Must Convert from Overhead to Underground



Example Private Property Ocean View Obstruction on La Vista Del Oceano



Example Private Property Ocean View Obstruction on La Vista Del Oceano