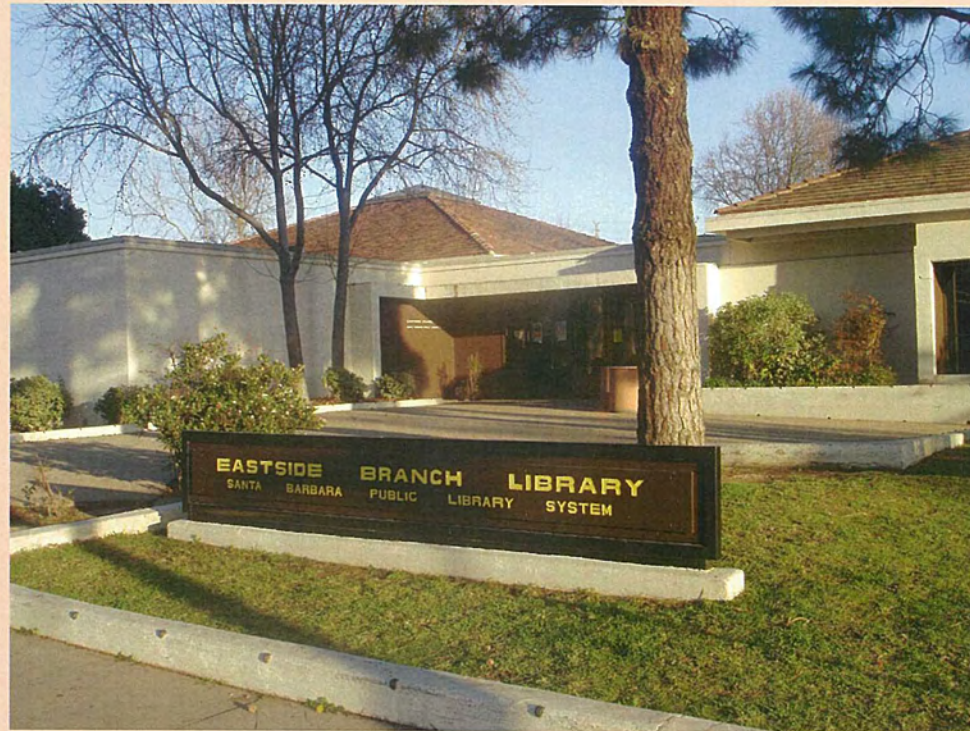


**GILDA PUENTE-PETERS**  
**ARCHITECTS**

ARCHITECTURE PLANNING UNIVERSAL DESIGN



## **EASTSIDE BRANCH LIBRARY ACCESSIBILITY SURVEY**



**July, 2007**

**CITY OF SANTA  
BARBARA**



1. INTRODUCTION AND BACKGROUND	1
Introduction The ADA Title II Requirements Project Background	
2. SUMMARY OF FINDINGS	4
Summary of Accessibility Survey Findings for Both Site and Building	
3. COST SUMMARY	7
Summary of Cost for Public Right-of-Way, Site and Building	
4. ACCESSIBILITY SURVEY REPORT GLOSSARY	8
Explanation of Accessibility Survey Report Format	
5. ACCESSIBILITY SURVEY REPORT	
Reference Drawings Photographs Survey Findings: Public Right-of-Way Site: Parking, Path of Travel to Building Building: Eastside Branch Library	







## Introduction

This document is an Accessibility Survey report for the **Eastside Branch Library, located at 1102 East Montecito Road, Santa Barbara, California**. This document has been prepared to evaluate both the site and buildings for compliance with the 1998 Americans with Disabilities Act (ADA) and 2001 California Building Code (CBC) Title-24.

The purpose of this study is to provide an overall accessibility assessment of the facility. This Accessibility survey identifies all areas of non-compliance with, includes a suggested recommendation and a preliminary budgetary cost estimate to eliminate the architectural barriers that prohibit program accessibility.

## The ADA Title II Requirements

Title II of the Americans with Disabilities Act requires cities, counties and public entities to make their programs, services and activities accessible and usable by people with disabilities. It also prohibits discrimination in their programs. The final Department of Justice rule for Title II of the ADA, 28 CFR Part 35, "Nondiscrimination on the Basis of Disability in State and Local Government Services" establishes these nondiscriminatory principles";

*"Except as otherwise provided in 35.150, no qualified individual with a disability shall, because a public entity's*

*facilities are inaccessible to or unusable by individuals with disabilities, be excluded from participation in, or be denied the benefits of, the services, programs, or activities of a public entity, or be subjected to discrimination by any public entity. (35.149)"*

Title II regulations give government agencies a choice of standards for barrier removal. Either using the Uniform Federal Accessibility Standards (UFAS) or the Americans with Disabilities Act Accessibility Guidelines -1998 (ADAAG) (35.151(c)). The City of Santa Barbara has selected ADAAG standards for their facilities renovations. Since these facilities are located in the State of California, and are recipients of State financial assistance, the California Government Code Sections 11135-11139.5 also applies. The requirements of these laws are almost identical to Section 504 of the Rehabilitation Act of 1973, which applies to recipients of federal financial assistance. The purpose of these laws is to ensure that public entities do not discriminate against qualified individuals with disabilities.

The State of California also requires compliance to the 2001 California Building Code (CBC) Title-24. There are few instances where ADAAG and CBC Title-24 requirements differ and in most instances, the California requirements exceed those in ADAAG. In these cases, where there is a conflict, the standard with most stringent accessibility will apply. The ADA

specifically states that it does not override requirements of other state and local jurisdictions, which may have more strict accessibility regulations.

The ADA also requires the public entities to prepare a Transition Plan if structural modifications are necessary to provide access to programs and services. In addition to evaluating structural barriers, the Transition Plan also requires a schedule for removing physical barriers that limit the participation of disabled individuals into the school programs. The ADA also requires that the Transition Plan reflect public input and validation before its final adoption.

The ADA defines “facilities” as:

*“Buildings, structures, sites, complexes, equipment, rolling stock or other conveyances, roads, walks, passageways, parking lots, or other real or personal property” (35.104)*

It is not necessary to remove each architectural barrier in every facility if access can be provided in a different yet effective way. The important goal is to provide access when a program is *“viewed in its entirety”*. The concept of “program access” is very important when public entities evaluate their programs. It means looking at all the activities where public participation is provided, and determining if there are barriers to public participation or whether the program is accessible and usable by individuals with disabilities.

As an alternative to removing physical barriers, public entities may choose other administrative and policy solutions such as

relocation of programs or program modifications to obtain overall access. For instance, a public entity may choose to relocate department meetings to an accessible location in lieu of retrofitting the department conference room.

*“A public entity shall operate each service, program or activity so that the service, program, or activity, when viewed in its entirety, is readily accessible to and usable by individuals with disabilities.” (35.150 (a))*

The Title II regulations required the removal of barriers in government facilities to be completed within three years of January 26, 1992, *“but in any event as expeditiously as possible”*. (53.150 (d))

In addition to the requirement of a Transition Plan, Title II also requires public entities to prepare a programmatic Self-evaluation. The ADA Programmatic Self-evaluation must examine current services, policies, practices and procedures to make sure that they are not discriminatory to individuals with disabilities; the ADA Self-evaluation shall also include an employment Self-evaluation, which is not part of this study. The public entity will have to make the modifications necessary to avoid discriminatory practices on the basis of disability. The ADA Self-evaluation was prepared by the City of Santa Barbara in 1984. A partial Self-evaluation update of specific important policies needed to ensure Gilda Puente-Peters, Architects in a separate report, will prepare program accessibility.



## Project Background

The City of Santa Barbara had prepared a Transition Plan and Self-evaluation in 1984 prior to the passage to the Americans with Disabilities Act, to be in compliance with the regulations of section 504 of the Rehabilitation Act. This Transition Plan was updated in 1994 to reflect the requirements of the Americans with Disabilities Act (ADA). City of Santa Barbara departments have made on-going implementation efforts to remove architectural barriers that impede access to persons with disabilities to the Cities programs, services and activities in a prioritized manner. The City of Santa Barbara has established the Access Advisory Committee to Staff (AACS), which has been working through the years with City staff providing input regarding City-wide accessibility issues and prioritization of barrier removal.

The City of Santa Barbara in its efforts to comply with the Americans with Disabilities Act hired Gilda Puente-Peters, Architects (GPPA) in November 2006. GPPA worked with City staff in the preparation of a new ADA Transition Plan as well as a Self-evaluation updates, to reflect current State and Federal accessibility codes and regulations as well as changes made to its facilities over time.

The preparation of detailed disabled accessibility survey reports is the first step towards the preparation of the ADA Transition Plan Update. These detailed reports have been prepared 10 selected priority facilities within the City General Funds facilities. For the remaining General Fund and Enterprise facilities that have public access, a general architectural and programmatic evaluation has been performed. The goal of these general evaluations is to find out the most important barriers to access to City facilities, programs and services by persons with disabilities that need to be removed or mitigated to provide program accessibility, when looking at the City in its entirety.

These two types of evaluations were the base information used by the accessibility consultant GPPA and City's staff to prioritize the barrier removal efforts and to develop a long-term Citywide strategic plans and schedule for prioritized implementation. As required by the ADA, the City of Santa Barbara solicited input in the prioritization process from the disabled community and the general public.

The ADA Transition Plan and Self-evaluation updates are separate reports.



### Eastside Branch Library Accessibility Survey Report:

This Accessibility Survey report includes the evaluation of the immediate public right-of-way adjacent to the **Eastside Branch Library building**, the site including parking, and a one-story building. This is a comprehensive evaluation of the existing conditions in regards to its compliance with the applicable 1998 ADAAG Federal guidelines and the State of California CBC Title-24 accessibility standards. When conflict exists between the two regulations, the most stringent requirement has been applied.

The summary below highlights some of the issues that GPA found to be non-compliant with current Federal and State regulations applicable at the time of the Accessibility Survey. While this survey information reflects the existing conditions found at the time of the assessment, it is important to remember that many conditions will change over time, due to regular maintenance, alterations and users modifications to the space like placement of furniture or equipment. The purpose of this summary is only to give an overview of the findings. For detailed information on any of these areas, please refer to the complete Accessibility Survey report.

### Buildings summary of findings: Buildings included in this Accessibility Survey Report:

The Eastside Branch Library building is located in the East side of the City of Santa Barbara, on a residential neighborhood. The Eastside Branch Library building is a one-

story facility. The main entrance is located, towards the street and another accessible entrance form existing onsite parking.

This report includes only the Eastside Branch Library Building No. EMO 1102.

This building is highly used by the general community to use their library services and programs as well as to attend programs.

### Public Right-of-Way Issues:

1. There is a **blue zone on street parking** but it does not have a curb ramp adjacent to it.
2. There are no **tree grates** at trees adjacent to the sidewalk or the ground cover level maintained at the same level of sidewalk.
3. The **book drop** does not have an accessible section mounted at an accessible height if you approach it from the sidewalk.
4. **The curb ramps** have several non-compliant issues including some **steep curb ramp and flair side slopes, no detectable warnings and contrast with the adjacent surfaces**.
5. There are some **pavement dislocations and cross slope issues** on the sidewalks and driveways.

### Site Issues:

1. The main entrance to this facility is through a main plaza, which has several and **cross slope** issues in the path of travel. The planted areas do not have **tree grates** or ground cover at the same level as the plaza.
2. The **public parking lot** which is located at the backside of the Library does not have 'NO PARKING' painted on access aisle.
3. There are no **detectable warnings** where walk-access aisle meets parking vehicular area, and at blended walk adjacent to parking driveway.
4. There is no accessible path of travel to **flag pole** and accessible operable mechanism mounted within wheelchair user's reach range.
5. There are some **protruding objects**, protruding tree branches and book return boxes above 27" and below 80" high.
6. A walk from the plaza to the sidewalk has excessive **running slope** 7.6% without handrails.
7. There is a **bench** without back support.
8. **Gate to exterior from courtyard** does not have a compliant path of travel to sidewalk or main entry plaza.
9. The **picnic table** located at the courtyard does not have compliant knee clearance.

### Building Issues:

1. There is only one public **accessible entrance to the Library building**. There is an automatic door opener, which at the time of the survey was out of order. There is no push button on the outside of the building.
2. The **ceramic tile** at the main entrance lobby is not slip resistant and vibration free.
3. **The general accessibility issues** throughout the building interior spaces are lack of tactile signage; restroom signs have regular Braille instead of California Grade 2 Braille. There are heavy doors, inaccessible door hardware, door stops mounted at the lower 10" kick plate area on the push side of the door required to be smooth, loose doormats.
4. There is a lack of **tactile and Braille room identification signs, "EXIT" signs, directional sign from inaccessible staff restroom to accessible restrooms**.



5. The existing **fire alarm pulls stations** require tight grasping to operate and **fire extinguishers operable mechanisms are mounted too high**. There are **visual alarms with red cover (not compliant)** and other areas do not have the required **strobe lights**. Some **power outlets are mounted too low and temperature controls mounted too high**.
6. The **service counters** do not have a low section at 34" high for persons with disabilities.
7. **Newly constructed Staff sink** is not accessible, without the required knee clearance.
8. There are two accessible **Men's and Women's public restrooms** that have some minor code deviations.
9. Several of the workstations and tables at the library do **not have the required knee clearance for wheelchair users**.
10. **Some library stacks are higher than 54"**, no signage indicating the availability of staff assistance to retrieve books have been provided at the stacks and service counters.
11. There are some **access aisles** between book stacks that are too narrow and not compliant.

12. The **baby-changing table** located at the restroom does not have compliant operable mechanism and is mounted too high.

It is very important to not only provide accessibility features but to maintain them, including educating the staff about the accessibility requirements.

**Details of the inaccessible features of this facility are included in the following report.**





The Accessibility Survey report cost summary below reflects the probable construction cost estimate without applying the location factor.

**Public Right-of-Way:**

Preliminary probable construction cost: \$ 56,332

**Site:**

Preliminary probable construction cost: \$ 41,514

**Eastside Branch Library First Floor:**

Preliminary probable construction cost: \$ 76,101

**TOTAL COST: \$ 173,947**

**SOFT COST: \$ 60,881**

**GRAND TOTAL COST: \$ 234,828**

The preliminary construction cost estimates summarized above, are preliminary budgetary estimates only, meant to give the City of Santa Barbara a tool for budgeting and prioritizing of the Transition Plan.

**Location Factor:**

In order to address the higher cost of construction, the City decided to use a 1.30 location factor for the calculation of all cost estimates instead the RSMeans Cost Estimate location factor of 1.08 for commercial facilities.

**Soft Cost Factor:**

The preliminary probable construction cost estimate does not include the soft cost that can be 35% of the construction cost estimate, depending on the project. These estimates can fluctuate significantly depending on the specific design solution, method and timeframe of the mitigation process, phased projects, use of construction managers, bidding climate, etc.

The Accessibility Survey report is an evaluation of the existing facilities, sites and buildings and includes all the non-compliant items in regards to the Federal regulation, the American with Disabilities Act (ADA) and the State requirements, California Building Code Regulation (CBC) Title-24.

The survey report contains the following items:

**Item:**

Each item is sequentially numbered and relates to the reference drawing in order to be able to locate the barrier.

**Location:**

This is a description of the site location, for instance parking lot, sidewalk, curb ramp, etc. and in the buildings usually a room number or name that best identifies the location of the item.

**Condition/Barrier:**

Indicates the nature of the barrier or non-compliant condition.

**Requirement:**

Indicates the specific code requirements for the particular condition/barrier.

**Existing condition:**

This is a brief description of the conditions in the field and indicates why the item is not code compliant, for instance a 4.5% cross slope of a sidewalk, when the code requirement is a maximum of 2% or not to exceed 2.5% in 20 LF. Under this field we also will indicate a Photo #, where applicable.

**Photo #:**

Photo numbers are not sequential, but correspond to the Item number indicated in the reference drawing, which corresponds to the Item number in the report. The photos included in the report illustrate only major architectural barriers or the main type of barriers found during the survey process.

**Code Reference:**

“ADAAG” indicates the reference to the Federal regulations, Americans with Disabilities Act Accessibility Guidelines, and “T24” the State Code reference to the California Building Code (CBC) Title-24.

**Suggested Recommendation:**

This “Recommendation” field indicates one of the suggested possible solutions to remove an architectural barrier. It is important to understand that there are several possible solutions to each problem and the final solution can vary depending of the design selected in the implementation phase. Often the nature of the solution is linked to a cost consideration. For instance, in a restroom the design solutions selected may be to provide the minimum “patch and match”



retrofit to achieve access, the least expensive solution, or the public entity may select to do a complete retrofit of the restrooms to address other maintenance of functional problems and to modernize the facility at the same time that the ADA barriers are removed.

**Quantity:**

This field indicates the number of items or the quantity in different unit types found in the field, in order to determine the budgetary preliminary probable construction cost estimate.

**Unit Type:**

This field indicates the unit type utilized to determine the budgetary preliminary probable construction cost estimate. The unit types can be by Job, Each, SF square feet, LF lineal feet.

**Unit Cost:**

This field indicates the unit cost for the unit type indicated, in order to determine the budgetary preliminary probable construction cost estimate.

**Total Cost:**

This field indicates the total budgetary preliminary probable construction cost estimate. This probable construction cost estimate does not include soft cost, which in a public building construction type can be around 35% to 50% of the construction cost estimate, depending on the implementation methods, location of the project, etc. There are some items

that might be indicated in the report as REF-reference, this means that either there is no cost associated with the barrier removal of the item, or that the cost for the particular item is included as a total job, and the additional item information is for clarification only or to give a more detailed information of why the existing condition is not code compliant. The reference items are also used to indicate hardship conditions, for instance topographical site constraints that prohibit access to a facility, applicable code exceptions and other unreasonable hardship conditions.

The survey report also summarizes the cost of each area within the item number, and also includes a total cost per site and building. If the project is going to be implemented in a phased manner, provisions for additional cost per each additional year shall be added to this probable construction cost estimate. This inflation factor used currently in the Construction is 4.5% and should be calculated as a compounded factor over the expected duration of the project.

**PR-Priority:**

This field indicates the priority based on hazardous conditions, severity of the barriers and whether the existing condition denies access to programs and services or it constitutes only a minor code deviation.

The prioritization criteria used during the survey process reflects the severity of the barrier as follows:



**Priority 1:** Hazardous conditions and major barrier to access for buildings and sites. These are barriers that should be removed as soon as possible.

**Priority 2:** High priority refers to existing conditions that impede accessibility to facilities or sites, denying access to the programs and services offered in the facility to persons with disabilities.

**Priority 3:** Medium priority refers to specific accessibility barriers within facilities or sites that are usable by persons with disabilities, but the specific elements are not fully code compliant. In these cases removal of the barrier will enhance accessibility.

**Priority 4:** Low priority refers to usable facilities or sites, but with minor code deviations. In existing facilities, usually due to the great need for accessibility improvements, removal of low priority barriers might take a long time to retrofit them since they will have the lower priority.

In some cases these lowest level of priority barriers can be within the construction tolerance range and therefore these barriers may never be removed.

This construction tolerance allowance will have to be evaluated in a case-by-case basis and approved by the agencies that have jurisdiction on the project, or be addressed in a public entity Transition Plan.

Since this project will be phased, other than the priorities set at the time of the survey, it is critical to also conduct a program accessibility evaluation, in order to determine the physical barriers that need to be removed in order to provide program access. Then a final prioritization and schedule for implementation of the Transition Plan is developed. The process also includes a public and users input regarding the priorities and the most important barriers to be removed. The users of the public facilities programs and services are a source of very valuable input.

**Implementation Date:** The “IMPL DATE” field in the survey report is to be used during the implementation phase of the project, to monitor the architectural barrier removal progress made over time. City of Santa Barbara staff will enter the date of completion for each item either by hand in the hard copy of the report or in the MSACCESS database.

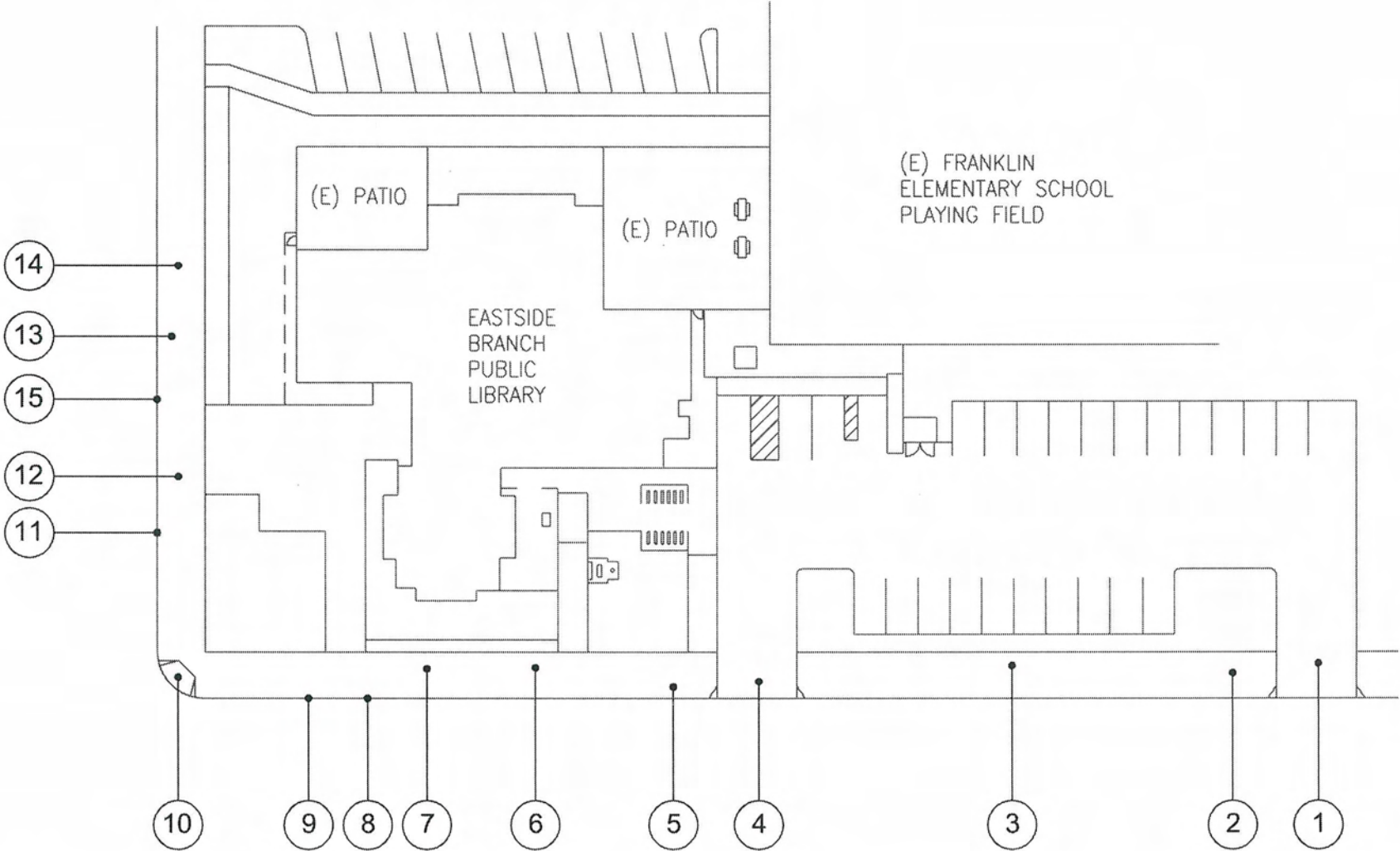


---

**EASTSIDE BRANCH LIBRARY  
PUBLIC RIGHT-OF-WAY**

---







*Public Right-of-Way - Photo # 1*

*The sidewalk at the driveway entrances to parking lot do not have detectable warnings to warn blind and low vision pedestrians that they are going into a vehicular area. The crosswalks in the middle of the block do not have curb ramps. Concrete needs to be repaired.*



*Public Right-of-Way - Photo # 2*

*Sidewalk has excessive cross slopes. The crosswalk located in the middle of the block does not have curb ramps for wheelchair users.*





*Public Right-of-Way - Photo # 3*

*Tree wells are not leveled with the sidewalk level. The on-street accessible parking does not have a curb ramp in the back of the parking area for back wheelchair deployment vans.*



*Public Right-of-Way - Photo # 4*

*The utility cover has gaps greater than 1/2" that need to be filled in.*





*Public Right-of-Way - Photo # 5*

*Curb ramp has excessive curb ramp and flare slopes. Grooves are 4" wide. There are no detectable warnings and the curb ramp does not contrast with the adjacent surface.*



*Public Right-of-Way - Photo # 6*

*The tree well is not leveled with the sidewalk level. The sidewalk has excessive cross slopes and uneven surface.*



*Public Right-of-Way - Photo # 7*

*Book return is not accessible from the street level,  
mounted too high. An accessible book return should be  
provided from the sidewalk side, at an accessible height.*



14-Apr-08

**Eastside Branch Library  
PUBLIC RIGHT-OF-WAY**


ITEM/ LOCATION	CONDITION BARRIER	REQUIREMENT	EXISTING CONDITION	CODE REFERENCE	SUGGESTED RECOMMENDATION	QTY UNIT TYPE	UNIT COST	TOTAL COST	PR	IMPL DATE
-------------------	----------------------	-------------	-----------------------	-------------------	-----------------------------	---------------------	--------------	---------------	----	--------------

**Eastside Branch Library PUBLIC RIGHT-OF-WAY Total Cost = \$56,332**

**1 Driveway**
**\$9,880**
**Detectable Warnings/Truncated Domes**

Where walk crosses or adjoins vehicular way not separated by curb, guardrails or handrails.	Yes		No detectable warnings at each side of driveway	ADAAG: 4.3.2, 4.6.2 T24: 1133B.8.5	Provide new detectable warnings to warn blind pedestrians they are entering into a vehicular or hazardous area.	72 SF	\$40	\$2,880	3	
--	-----	--	--	---------------------------------------	---	-------	------	---------	---	--

**Walks and Sidewalks**

Cross slope at intersection of walkway and driveway.	<2%, (2.5% not to exceed 20 L.F.)		Cross slope ranges from 2.1% to 3.8%.	ADAAG: 4.3.7 T24: 1133B.7.1.3	Modify driveway and walk/sidewalk/pedestrian way to provide compliant cross slope.	250 SF	\$28	\$7,000	3	
--	--------------------------------------	--	--	----------------------------------	---	--------	------	---------	---	--

**2 Sidewalk**
**\$15,400**
**Walks and Sidewalks**

Cross slope.	<2%, (2.5% not to exceed 20')		Cross slope 2.8%.	ADAAG: 4.3.7 T24: 1133B.7.1.3	Modify walk/sidewalk/pedestrian way to provide compliant cross slope.	550 SF	\$28	\$15,400	3	
--------------	-------------------------------	--	-------------------	----------------------------------	--	--------	------	----------	---	--

14-Apr-08

**Eastside Branch Library  
PUBLIC RIGHT-OF-WAY**


ITEM/ LOCATION	CONDITION BARRIER	REQUIREMENT	EXISTING CONDITION	CODE REFERENCE	SUGGESTED RECOMMENDATION	QTY	UNIT TYPE	UNIT COST	TOTAL COST	PR	IMPL DATE
3 Tree Well										\$200	
Walks and Sidewalks											
Pavement dislocations.	Beveled edge 1:2 max. (between 1/4" and 1/2")		There is 2" drop from sidewalk to level of dirt at tree well.	ADAAG: 4.5.2  T24: 1133B.7.4	Maintain tree well dirt or ground cover at the same level of sidewalk.	2	JOB	\$100	\$200	4	
4 Driveway										\$3,000	
Detectable Warnings/Truncated Domes											
Where walk crosses or adjoins vehicular way not separated by curb, guardrails or handrails.	Yes		No detectable warnings at each side of driveway Photo #: 1	ADAAG: 4.3.2, 4.6.2  T24: 1133B.8.5	Provide new detectable warnings to warn blind pedestrians they are entering into a vehicular or hazardous area.	75	SF	\$40	\$3,000	3	
5 Sideway										\$320	
Walks and Sidewalks											
Pavement dislocations.	Beveled edge 1:2 max. (between 1/4" and 1/2")		There is 2" drop from sidewalk to level of dirt at tree well.	ADAAG: 4.5.2  T24: 1133B.7.4	Maintain tree well dirt or ground cover at the same level of sidewalk.	1	JOB	\$100	\$100	4	



14-Apr-08

**Eastside Branch Library**  
**PUBLIC RIGHT-OF-WAY**


ITEM/ LOCATION	CONDITION BARRIER	REQUIREMENT	EXISTING CONDITION	CODE REFERENCE	SUGGESTED RECOMMENDATION	QTY	UNIT TYPE	UNIT COST	TOTAL COST	PR	IMPL DATE
Pavement dislocations.	Beveled edge 1:2 max. (between 1/4" and 1/2")		1"-1 1/2" pavement dislocation.	ADAAG: 4.5.2  T24: 1133B.7.4	Grind or repair pavement dislocation to create beveled transition 1:2 max.	11	LF	\$20	\$220	1	

**6 Sideway**
**\$9,072**
**Walks and Sidewalks**

Cross slope.	<2%, (2.5% not to exceed 20')	Cross slope ranges from 2.6% to 3.4%.  Photo #: 2	ADAAG: 4.3.7  T24: 1133B.7.1.3	Modify walk/sidewalk/pedestrian way to provide compliant cross slope.	324	SF	\$28	\$9,072	3	
--------------	-------------------------------	--	--------------------------------------	--	-----	----	------	---------	---	--

**7 Tree Well**
**\$100**
**Walks and Sidewalks**

Pavement dislocations.	Beveled edge 1:2 max. (between 1/4" and 1/2")	There is 2" drop from sidewalk to level of dirt at tree well.  Photo #: 3	ADAAG: 4.5.2  T24: 1133B.7.4	Maintain tree well dirt or ground cover at the same level of sidewalk.	1	JOB	\$100	\$100	4	
------------------------	--	---	------------------------------------	--	---	-----	-------	-------	---	--

14-Apr-08

**Eastside Branch Library  
PUBLIC RIGHT-OF-WAY**


ITEM/ LOCATION	CONDITION BARRIER	REQUIREMENT	EXISTING CONDITION	CODE REFERENCE	SUGGESTED RECOMMENDATION	QTY	UNIT TYPE	UNIT COST	TOTAL COST	PR	IMPL DATE
8 Tree Well										\$100	
Walks and Sidewalks											
Pavement dislocations.	Beveled edge 1:2 max. (between 1/4" and 1/2")	There is 2" drop from sidewalk to level of dirt at tree well.	ADAAG: 4.5.2  T24: 1133B.7.4	Maintain tree well dirt or ground cover at the same level of sidewalk.	1	JOB	\$100	\$100	4		
9 Sidewalk											
Hazards/Protruding Objects											
Minimum clear headroom, 80" high above finished floor min.	Provide 80" minimum path of travel clearance without overhead obstructions locate below the minimum required height.	Tree branch protrudes into the path of travel at 60" high.	ADAAG: 4.4.2  T24: 1121B.2	Maintain tree branches trimmed above 80" high minimum.	1	JOB	\$100	\$100	1		
Walks and Sidewalks											
Pavement dislocations, uneven surface.	Vertical change with beveled edge 1:2 max. (between 1/4" and 1/2")	Vertical change greater than 1/4" high at utility trench.  Photo #: 4	ADAAG: 4.5.2  T24: 1133B.7.4	Raise the level of sidewalk to have a smooth transition to utility trench cover.	1	JOB	\$500	\$500	1		

14-Apr-08

**Eastside Branch Library  
PUBLIC RIGHT-OF-WAY**


ITEM/ LOCATION	CONDITION BARRIER	REQUIREMENT	EXISTING CONDITION	CODE REFERENCE	SUGGESTED RECOMMENDATION	QTY	UNIT TYPE	UNIT COST	TOTAL COST	PR	IMPL DATE
Cross slope.		<2%, (2.5% not to exceed 20')	Cross slope ranges from 2.8% to 3.6%.	ADAAG: 4.3.7 T24: 1133B.7.1.3	Modify walk/sidewalk/pedestrian way to provide compliant cross slope.	330	SF	\$28	\$9,240	3	

**10 Curb Ramp**
**\$5,900**
**Curb Ramps & Landings**

Existing curb ramp with multiple code non-compliances.	Multiple code requirements.	Curb ramp running slope ranges from 12.1% to 15/2%; flair sides slope ranges from 18% to 23%; top landing 45"; 4" grooves; no detectable warnings and not contrasting color with adjacent surfaces. Photo #: 5	ADAAG: 4.7 T24: 1127B.5	Remove existing curb ramp and provide new curb ramp, with the required slopes, top and bottom landings, 12" grooves, detectable warnings, contrasting color with adjacent surfaces and "No-parking zone" red striping at each side of curb ramp.	1	JOB	\$5,900	\$5,900	2	
--	-----------------------------	---	----------------------------	--	---	-----	---------	---------	---	--

**11 Tree Well**
**\$100**
**Walks and Sidewalks**

Pavement dislocations.	Beveled edge 1:2 max. (between 1/4" and 1/2")	There is 1" drop from sidewalk to level of dirt at tree well. Photo #: 6	ADAAG: 4.5.2 T24: 1133B.7.4	Maintain tree well dirt or ground cover at the same level of sidewalk.	1	JOB	\$100	\$100	4	
------------------------	---	---	--------------------------------	--	---	-----	-------	-------	---	--

14-Apr-08

**Eastside Branch Library**  
**PUBLIC RIGHT-OF-WAY**


ITEM/ LOCATION	CONDITION BARRIER	REQUIREMENT	EXISTING CONDITION	CODE REFERENCE	SUGGESTED RECOMMENDATION	QTY	UNIT TYPE	UNIT COST	TOTAL COST	PR	IMPL DATE
12 Sidewalk										\$120	
Walks and Sidewalks											
Pavement dislocations.	Beveled edge 1:2 max. (between 1/4" and 1/2")	3/4" vertical pavement dislocation.	ADAAG: 4.5.2  T24: 1133B.7.4	Grind or repair pavement dislocation to create beveled transition 1:2 max.	6	LF	\$20	\$120	1		
13 Tree Well											
Walks and Sidewalks											
Pavement dislocations.	Beveled edge 1:2 max. (between 1/4" and 1/2")	There is 1" drop from sidewalk to level of dirt at tree well.	ADAAG: 4.5.2  T24: 1133B.7.4	Maintain tree well dirt or ground cover at the same level of sidewalk.	1	JOB	\$100	\$100	4		
14 Sidewalk										\$200	
Walks and Sidewalks											
Pavement dislocations.	Beveled edge 1:2 max. (between 1/4" and 1/2")	1/2" vertical pavement dislocation.	ADAAG: 4.5.2  T24: 1133B.7.4	Grind or repair pavement dislocation to create beveled transition 1:2 max.	10	LF	\$20	\$200	1		



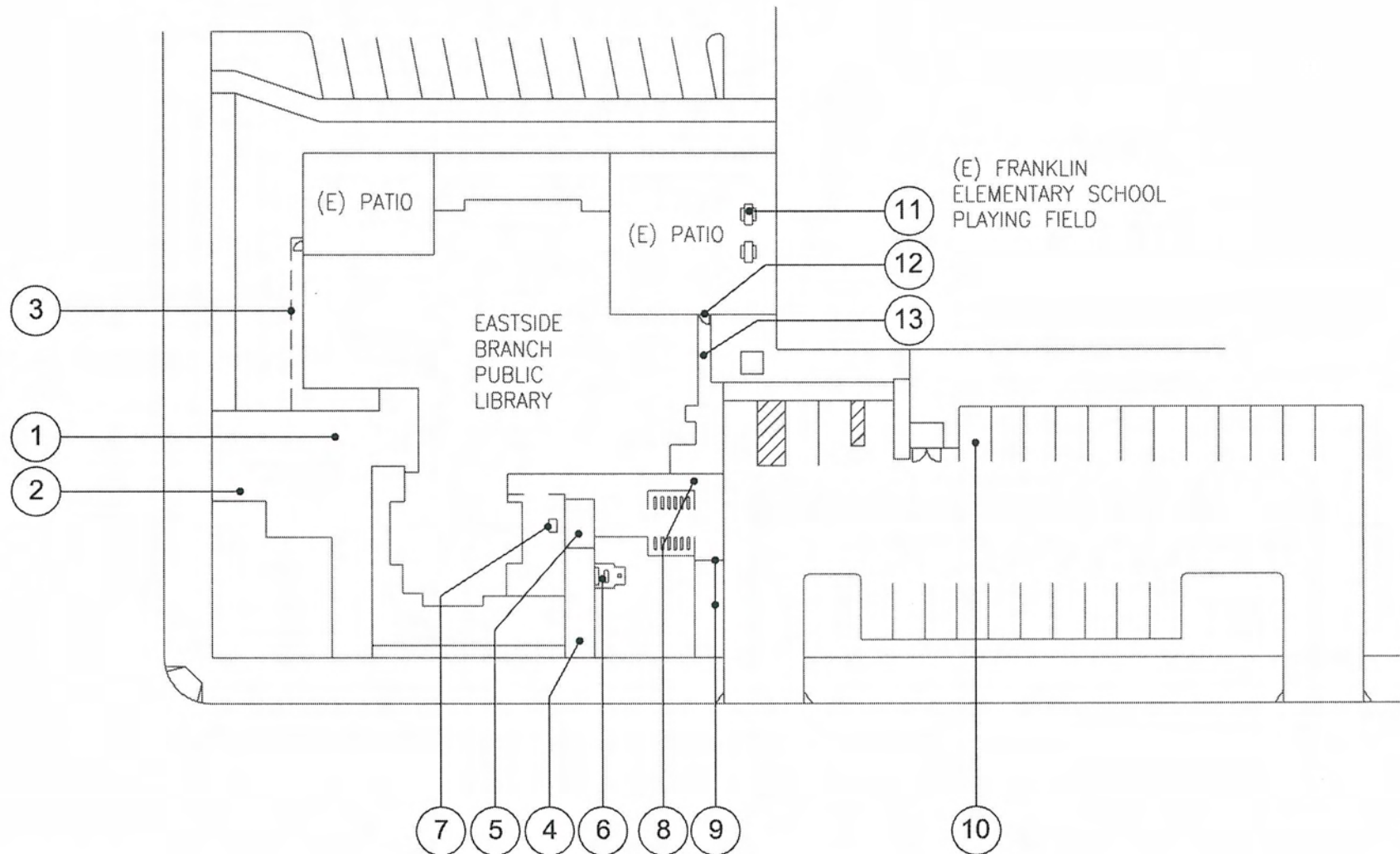
14-Apr-08

**Eastside Branch Library**  
**PUBLIC RIGHT-OF-WAY**


ITEM/ LOCATION	CONDITION BARRIER	REQUIREMENT	EXISTING CONDITION	CODE REFERENCE	SUGGESTED RECOMMENDATION	QTY	UNIT TYPE	UNIT COST	TOTAL COST	PR	IMPL DATE
15 Book Return										\$2,000	
Reach Ranges											
Forward approach reach range to objects or controls.	Mounting height 48" or less than 15" high, when clear space allows only forward approach.	Book drop does not have a slot for book drop from the sidewalk. Photo #: 7	ADAAG: 4.2.5 T24: 1118B.5	Provide a new book drop with approach from the sidewalk - recommended height 34".	1	JOB	\$2,000	\$2,000	3		

## **EASTSIDE BRANCH LIBRARY - SITE**







*Site - Photo # 1*

*Tree wells are not leveled with the walk level becoming a tripping hazard for pedestrians. The main entry plaza has some areas with excessive cross slopes.*



*Site - Photo # 2*

*There is not an accessible path of travel to flag pole. Flagpole operable mechanisms are mounted too high.*





*Site - Photo # 3*

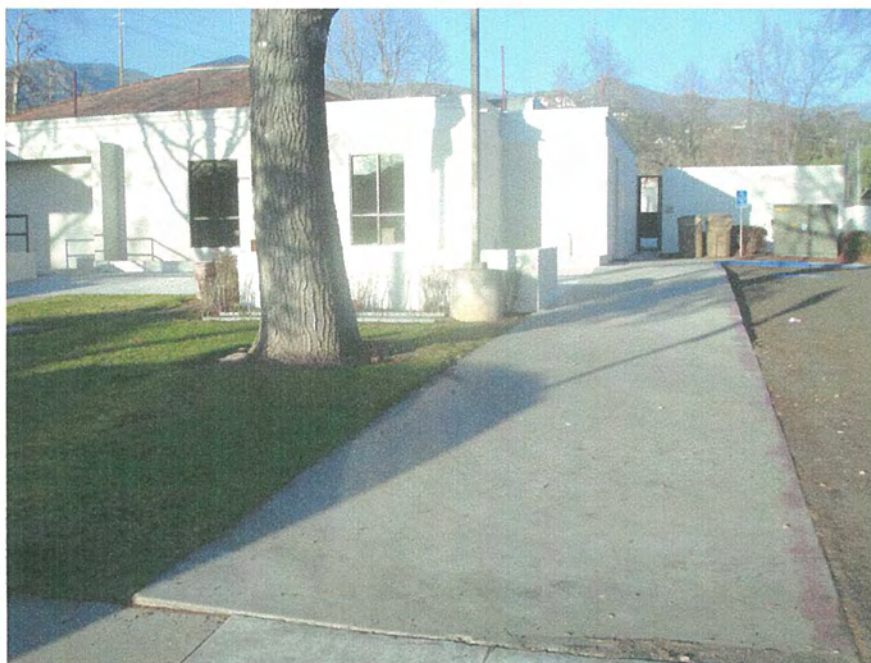
*Walk slope exceeds 5%, requiring compliant ramp handrails.*



*Site - Photo # 4*

*There are more than 2% cross slope at some areas of the walk.*





*Site - Photo # 5*

*Walk has excessive cross slope and a section of blended walk with driveway, without detectable warnings for blind pedestrians to warn them that they are entering a vehicular way.*



*Site - Photo # 6*

*The bench does not have a section with back and arms.*





*Site - Photo # 7*

*The picnic table does not have the required knee clearance for a person with disabilities using a wheelchair to sit at the table.*



*Site - Photo # 8*

*Narrow exiting door/gate from the patio, does not have the required clear with and a smooth 10" kick plate. There is no accessible path of travel from this door/gate to the main entrance plaza to the library or the sidewalk. There is no tactile/Braille "EXIT" sign.*





Site - Photo # 9

*There is no accessible path of travel from the door/gate to the main entrance plaza to the library or the sidewalk.*



Site - Photo # 10

*There are no detectable warnings indicating blind pedestrians that they are going into a vehicular way. There is not the required "No Parking" sign painted at the access aisle. There are some excessive cross slopes at the parking stall.*

14-Apr-08

# Eastside Branch Library SITE



ITEM/ LOCATION	CONDITION BARRIER	REQUIREMENT	EXISTING CONDITION	CODE REFERENCE	SUGGESTED RECOMMENDATION	QTY	UNIT TYPE	UNIT COST	TOTAL COST	PR	IMPL DATE
-------------------	----------------------	-------------	-----------------------	-------------------	-----------------------------	-----	--------------	--------------	---------------	----	--------------

Eastside Branch Library SITE Total Cost = \$41,514

## 1 Main Entrance

\$2,520

### Walks and Sidewalks

Cross slope.	<2%, (2.5% not to exceed 20')	Cross slope ranges from 3% to 3.5%.	ADAAG: 4.3.7 T24: 1133B.7.1.3	Modify walk/sidewalk/pedestrian way to provide compliant cross slope.	90	SF	\$28	\$2,520	3
--------------	-------------------------------	-------------------------------------	----------------------------------	---	----	----	------	---------	---

## 2 Tree Wells

\$300

### Walks and Sidewalks

Pavement dislocations.	Beveled edge 1:2 max. (between 1/4" and 1/2")	There is 2" drop from walk to level of dirt at tree well. Photo #: 1	ADAAG: 4.5.2 T24: 1133B.7.4	Maintain tree well dirt or ground cover at the same level of walk.	3	JOB	\$100	\$300	4
------------------------	---	---	--------------------------------	--	---	-----	-------	-------	---

## 3 Walk To Exit Gate

\$6,160

### Exterior Routes of Travel

Accessible route to building entrances & exterior ground level exits.	Yes	No accessible path of travel from exit gate to sidewalk or entrance plaza. Photo #: 8, 9	ADAAG: 4.3.2 T24: 1118A.1, 1127B.1.2	Provide accessible route.	220	SF	\$28	\$6,160	2
---	-----	---	---	---------------------------	-----	----	------	---------	---

14-Apr-08

**Eastside Branch Library  
SITE**


ITEM/ LOCATION	CONDITION BARRIER	REQUIREMENT	EXISTING CONDITION	CODE REFERENCE	SUGGESTED RECOMMENDATION	QTY	UNIT TYPE	UNIT COST	TOTAL COST	PR	IMPL DATE
4 Walk										\$80	
Walks and Sidewalks											
Pavement dislocations.	Beveled edge 1:2 max. (between 1/4" and 1/2")		3/4" vertical pavement dislocation.	ADAAG: 4.5.2  T24: 1133B.7.4	Grind or repair pavement dislocation to create beveled transition 1:2 max.	4	LF	\$20	\$80	1	
5 Walk To Back Entrance										\$10,000	
Walks and Sidewalks											
Slope (if it exceeds 5%, walkway must meet ramp standards).	1:20 (5.0%) max.		Running slope 7.6% without handrails. Photo #: 3	ADAAG: 4.8.1  T24: 1133B.7.3	Provide compliant ramp with handrails on both sides.	40	LF	\$250	\$10,000	2	
6 Flag Pole										\$3,200	
Exterior Routes of Travel											
Accessible route to site feature(s).	Yes		No accessible path of travel to flag pole. Photo #: 2	ADAAG: 4.3.2  T24: 1114B.1.2	Provide an accessible route to site feature(s).	100	SF	\$28	\$2,800	3	

14-Apr-08

**Eastside Branch Library  
SITE**


ITEM/ LOCATION	CONDITION BARRIER	REQUIREMENT	EXISTING CONDITION	CODE REFERENCE	SUGGESTED RECOMMENDATION	QTY	UNIT TYPE	UNIT COST	TOTAL COST	PR	IMPL DATE
-------------------	----------------------	-------------	-----------------------	-------------------	-----------------------------	-----	--------------	--------------	---------------	----	--------------

**Reach Ranges**

Forward approach reach range to objects or controls.	Mounting height 48" or less than 15" high, when clear space allows only forward approach.	Operable mechanism at flag pole, mounted at 55" high.	ADAAG: 4.2.5 T24: 1118B.5	Relocate object or modify equipment mounting height to be within forward reach range.	1	JOB	\$400	\$400	3
--	---	---	------------------------------	---	---	-----	-------	-------	---

**7 Bench****\$400****Fixed Benches**

Benches with back support.	Back support to be provided that is 42" minimum in length and that extends from a point 2" maximum above the seat to a point 18" minimum above the bench.	No back support. Photo #: 6	ADAAG: 4.37.2 T24:	Provide compliant back support.	1	JOB	\$400	\$400	3
----------------------------	---	--------------------------------	-----------------------	---------------------------------	---	-----	-------	-------	---

**8 Walk****\$2,800****Walks and Sidewalks**

Cross slope.	<2%, (2.5% not to exceed 20')	Cross slope ranges from 2.4% to 4.0%. Photo #: 4	ADAAG: 4.3.7 T24: 1133B.7.1.3	Modify walk/sidewalk/pedestrian way to provide compliant cross slope.	100	SF	\$28	\$2,800	3
--------------	-------------------------------	---	----------------------------------	---	-----	----	------	---------	---



14-Apr-08

# Eastside Branch Library SITE



ITEM/ LOCATION	CONDITION BARRIER	REQUIREMENT	EXISTING CONDITION	CODE REFERENCE	SUGGESTED RECOMMENDATION	QTY	UNIT TYPE	UNIT COST	TOTAL COST	PR	IMPL DATE
9 Walk										\$10,020	
Detectable Warnings/Truncated Domes											
Where walk crosses or adjoins vehicular way not separated by curb, guardrails or handrails.	Yes		No detectable warnings at blended walk adjacent to parking lot driveway.	ADAAG: 4.3.2, 4.6.2  T24: 1133B.8.5	Provide new detectable warnings to warn blind pedestrians they are entering into a vehicular or hazardous area.	70	SF	\$40	\$2,800	1	
Walks and Sidewalks											
Pavement dislocations, uneven surface.	Vertical change with beveled edge 1:2 max. (between 1/4" and 1/2")	2" high pavement dislocation.		ADAAG: 4.5.2  T24: 1133B.7.4	Raise the level of sidewalk to have a smooth transition to utility trench cover.	1	JOB	\$500	\$500	1	
Cross slope.	<2%, (2.5% not to exceed 20')	Cross slope ranges from 3.0% to 4.3%. Photo #: 5		ADAAG: 4.3.7  T24: 1133B.7.1.3	Modify walk/sidewalk/pedestrian way to provide compliant cross slope.	240	SF	\$28	\$6,720	3	

14-Apr-08

# Eastside Branch Library SITE



ITEM/ LOCATION	CONDITION BARRIER	REQUIREMENT	EXISTING CONDITION	CODE REFERENCE	SUGGESTED RECOMMENDATION	QTY	UNIT TYPE	UNIT COST	TOTAL COST	PR	IMPL DATE
10 Parking										\$970	
Detectable Warnings/Truncated Domes											
Where walk crosses or adjoins vehicular way not separated by curb, guardrails or handrails.	Yes		No detectable warnings where walk-access aisle meets parking vehicular area.  Photo #: 10	ADAAG: 4.3.2, 4.6.2  T24: 1133B.8.5	Provide new detectable warnings to warn blind pedestrians they are entering into a vehicular or hazardous area.	18	SF	\$40	\$720	2	
Parking and Passenger Loading Zones											
"No Parking" painted at access aisle.	Yes		No sign painted on access aisle.  Photo #: 10	ADAAG: N.A.  T24: 1129B.4(1) & (2)	Provide the words "No Parking" at each access aisle, painted in 12" high letters.	1	JOB	\$250	\$250	2	
11 Picnic Table										\$500	
Picnic Elements											
Recreation areas, picnic benches		Make a minimum of one picnic bench or 5% of all picnic benches provided accessible.	Picnic table does not have the required knee clearance and usable space for wheelchair users.  Photo #: 7	ADAAG: Recommended  T24: N/A	Provide extension for picnic bench end to make accessible.	1	JOB	\$500	\$500	3	

14-Apr-08

**Eastside Branch Library  
SITE**


ITEM/ LOCATION	CONDITION BARRIER	REQUIREMENT	EXISTING CONDITION	CODE REFERENCE	SUGGESTED RECOMMENDATION	QTY	UNIT TYPE	UNIT COST	TOTAL COST	PR	IMPL DATE
12 Gate										\$3,500	
Doors											
Door opening width measured between face of door & opposite stop.	32" clear opening width when 90° open.	Gate 24" wide.		ADAAG: 4.13.5 T24: 1133B.3.1.1.1; 1133B.2.3 Fig. 11B-33	Enlarge opening and replace door and door frame.	1	JOB	\$3,500	\$3,500	2	
13 Walk										\$1,064	
Walks and Sidewalks											
Walk/sidewalk width.	36" ADA, 48" min. (CA only)	30" wide walk.		ADAAG: 4.3.3 T24: 1133B.7.1	Enlarge width of walk/sidewalk/pedestrian way to 48" when area is remodeled.(CA only)	38	SF	\$28	\$1,064	3	

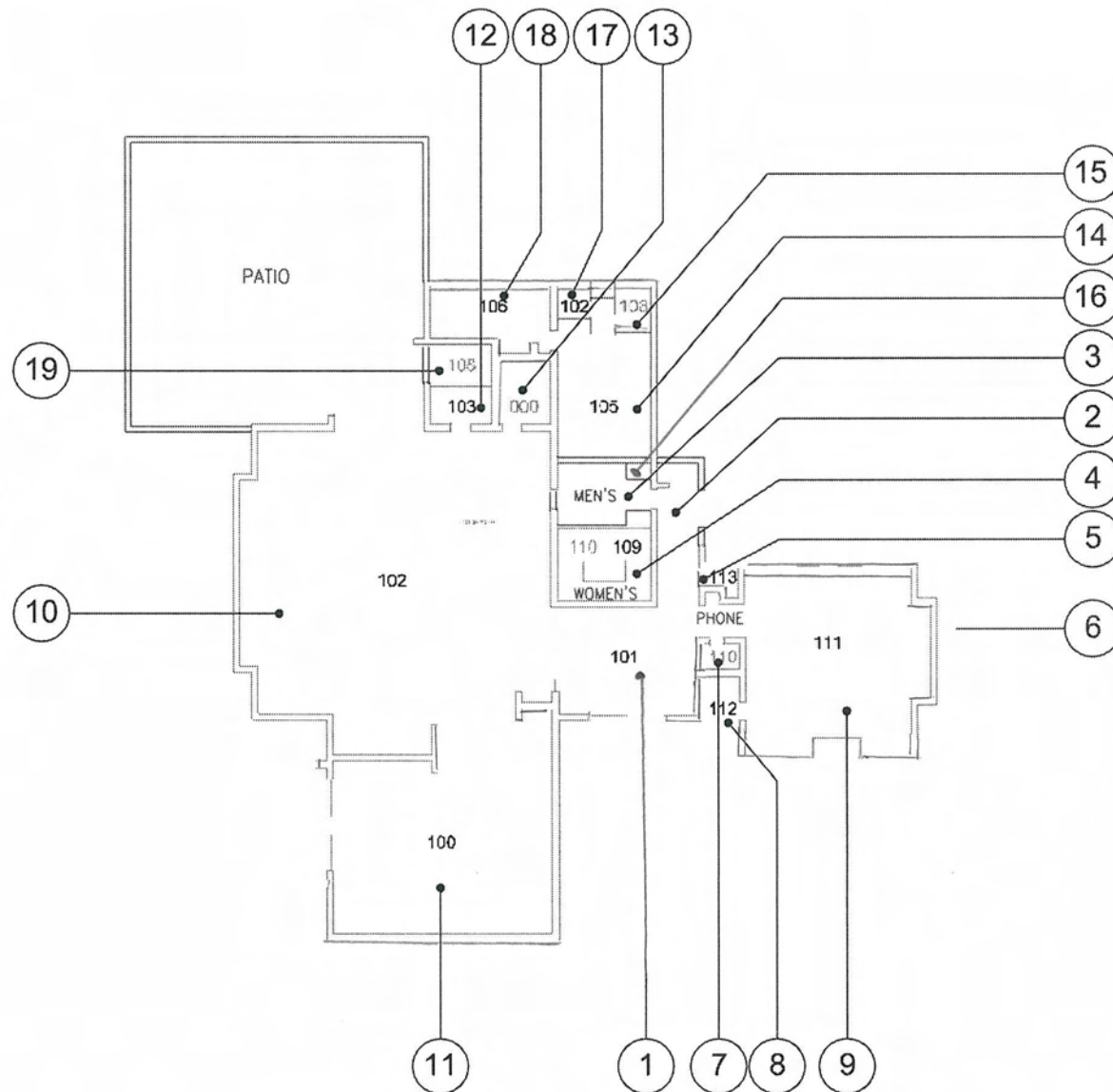
---

**EASTSIDE BRANCH  
LIBRARY - FIRST FLOOR**

---









*Building - Photo # 1*

*There is no International Symbol of Accessibility indicating the accessible door. Automatic door does not have operating controls on the exterior of the door, only inside. There is no tactile and Braille entrance identification sign*



*Building - Photo # 2*

*Automatic door has the operating controls adjacent to the door, which requires wheelchair users to use the push plate and then quickly back out of the way of the door swing. Loose doormat needs to be secured. There is no tactile and Braille "EXIT" sign.*





*Building - Photo # 3*

*Library lobby tile floor is not slip resistant and vibration free. There is no tactile and Braille room identification sign.*



*Building - Photo # 4*

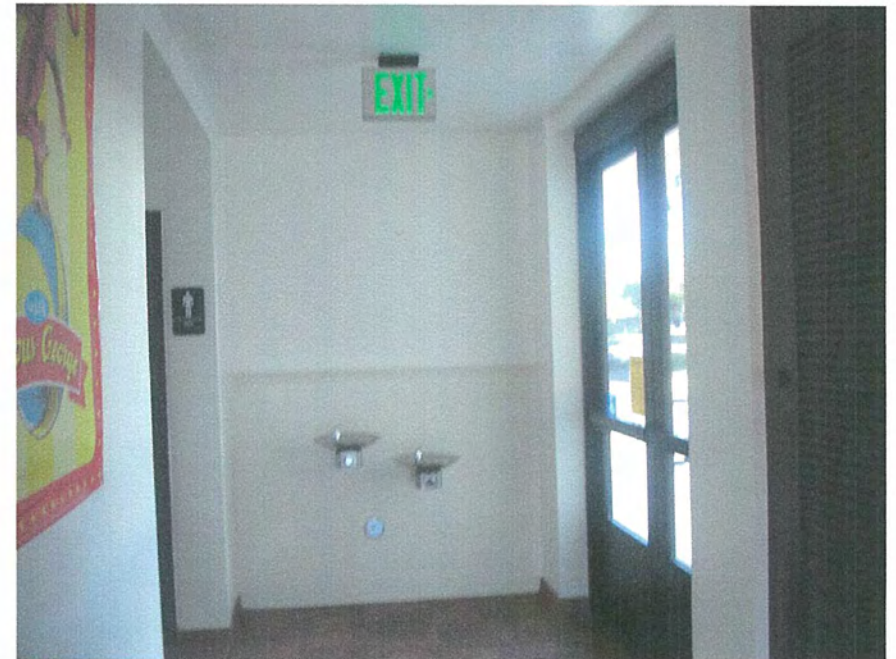
*Strobe light has red cover instead of the required white or clear cover. Fire alarm pull station requires tight grasping to operate and is mounted behind chairs.*





*Building - Photo # 5*

*Automatic door has the operating controls adjacent to the door, which requires wheelchair users to use the push plate and then quickly back out of the way of the door swing.*



*Building - Photo # 6*

*There is no tactile and Braille "EXIT" sign.*





*Building - Photo # 7*

*Tactile Men's restroom sign adjacent to the door has Federal Braille instead of contracted Grade 2 Braille.*



*Building - Photo # 8*

*Baby changer operable mechanism requires tight grasping to operate.*





*Building - Photo # 9*

*There is not the required 1 ½" minimum clearance  
between grab bar and automatic flush valve.*



*Building - Photo # 10*

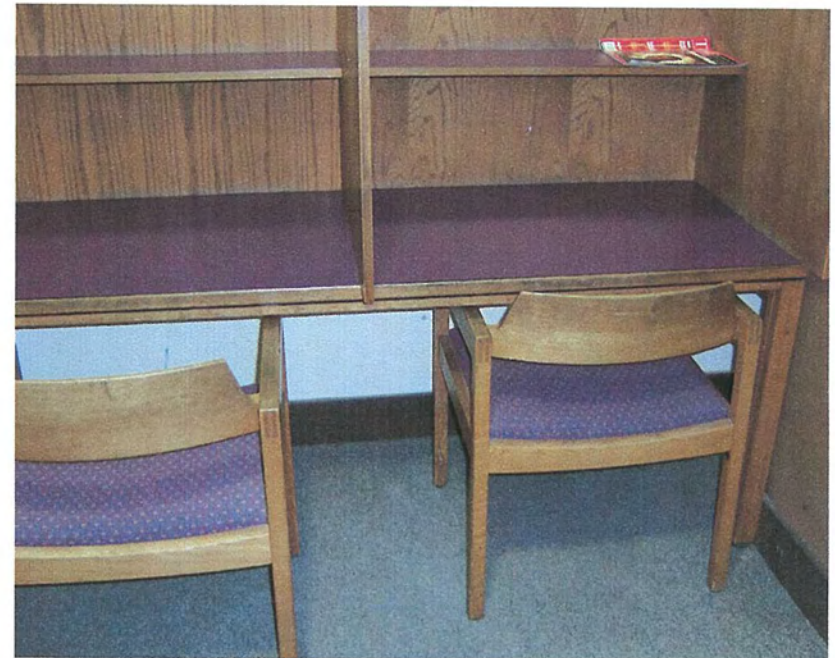
*Circulation to counter back work area is too narrow, less  
than 36" wide.*





*Building - Photo # 11*

*Furniture blocks the required push side strike clearance at door. Loose doormats needs to be secured. Doorstop is located at the lower 10" kick plate area required to be smooth. There is no tactile and Braille "EXIT ROUTE" sign.*



*Building - Photo # 12*

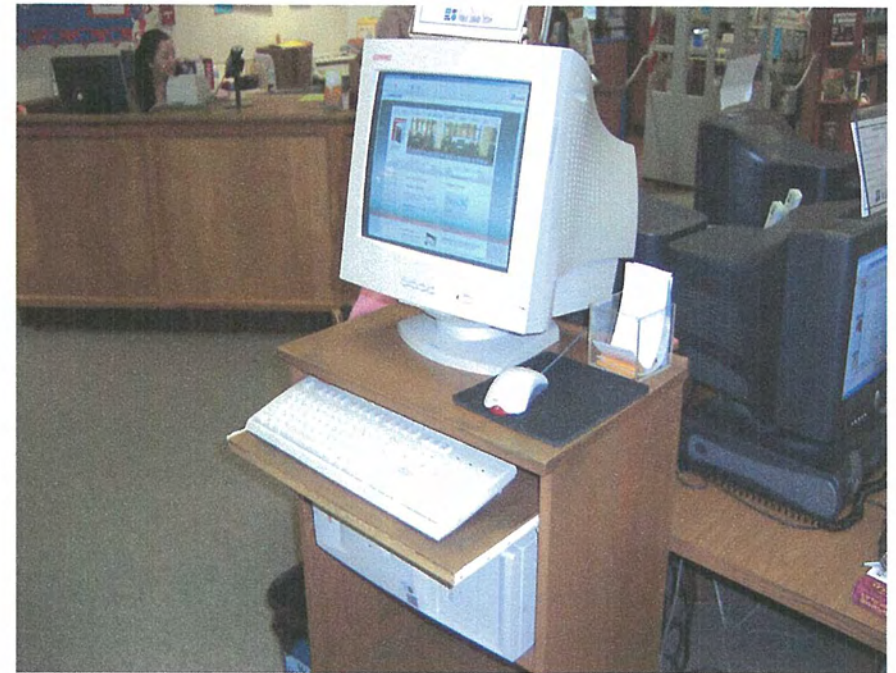
*Built-in study carrel does not have the required knee clearance.*





*Building - Photo # 13*

*Library counter is too high and does not have a low section of 34" maximum height by 36" minimum width, for wheelchair users.*



*Building - Photo # 14*

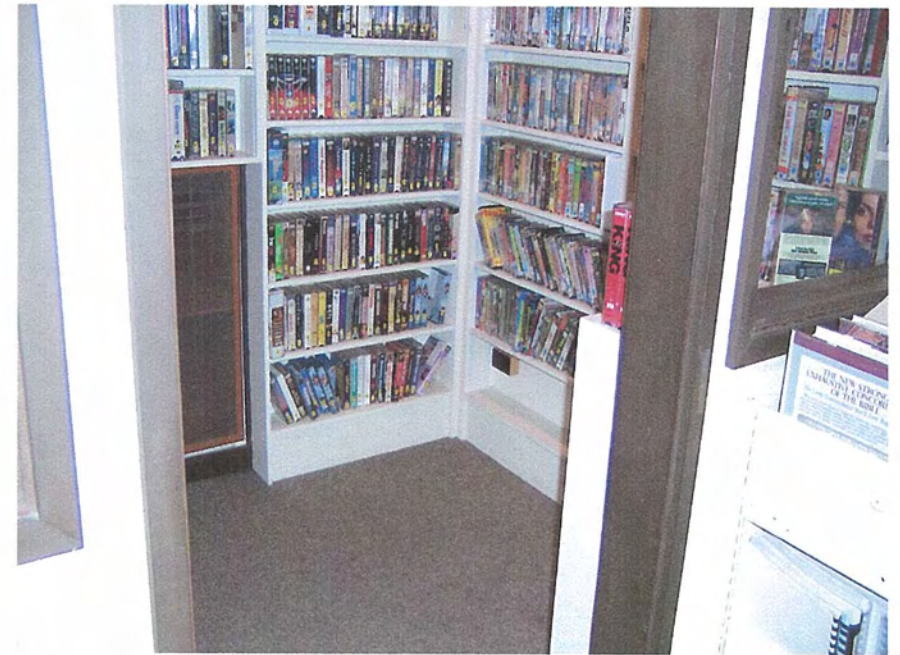
*Computer library catalog is not accessible, it does not have the required knee clearance and is mounted too high.*





*Building - Photo # 15*

*Fire alarm pull station requires tight grasping to operate and is mounted too high behind bookcase.*



*Building - Photo # 16*

*Video bookshelves mounted above 56" high, require sign indicating that there is an attendant at the library that will help retrieving videotapes. A similar sign shall be posted at the main library counter.*





*Building - Photo # 17*

*Sink is not accessible, it does not have the required knee clearance.*



*Building - Photo # 18*

*There is not lever hardware and tactile and Braille sign.*

14-Apr-08

**Eastside Branch Library**  
**FIRST FLOOR**


ITEM/ LOCATION	CONDITION BARRIER	REQUIREMENT	EXISTING CONDITION	CODE REFERENCE	SUGGESTED RECOMMENDATION	QTY UNIT TYPE	UNIT COST	TOTAL COST	PR	IMPL DATE
-------------------	----------------------	-------------	-----------------------	-------------------	-----------------------------	---------------------	--------------	---------------	----	--------------

**Eastside Branch Library FIRST FLOOR Total Cost = \$76,101**
**1 Lobby - Main Entrance**
**\$17,831**
**Doors**

Surface doormats.	Must be anchored to prevent interference with wheelchair traffic.	Loose doormat. Photo #: 2	ADAAG: 4.5.3 T24: 1133B.1.1.1.3;Fig. 11B-25	Anchor doormat to floor or remove it.	1 JOB	\$100	\$100	2
Surface doormats.	Must be anchored to prevent interference with wheelchair traffic.	Loose doormat. Outside 2" gap. Photo #: 1	ADAAG: 4.5.3 T24: 1133B.1.1.1.3;Fig. 11B-25	Anchor doormat to floor or remove it.	1 JOB	\$100	\$100	2
Door closers, pressure to open interior or exterior doors.	5 lbs. max. effort to open, closing time 3 seconds from 70 degree position and door stops 3" before latch, or provide automatic door openers.	Door force to open 16 lbs., door sweep 4 secs., back check 0 secs.	ADAAG: 4.13.10 & 11 T24: 1133B.2.5 & 1133B.2.5.1	Adjust existing door closer.	1 JOB	\$100	\$100	2

14-Apr-08

**Eastside Branch Library**  
**FIRST FLOOR**


ITEM/ LOCATION	CONDITION BARRIER	REQUIREMENT	EXISTING CONDITION	CODE REFERENCE	SUGGESTED RECOMMENDATION	QTY	UNIT TYPE	UNIT COST	TOTAL COST	PR	IMPL DATE
Door closers, pressure to open interior or exterior doors.	5 lbs. max. effort to open, closing time 3 seconds from 70 degree position and door stops 3" before latch, or provide automatic door openers.	Door force to open 17 lbs., door sweep 4 secs., back check 0 secs. Automatic door control is out of order, located adjacent to door inside and no push button outside.	Photo #: 1, 2, 5	ADAAG: 4.13.10 & 11  T24: 1133B.2.5 & 1133B.2.5.1	Provide automatic door push button outside and repair and relocate control inside.	1	JOB	\$800	\$800	2	
Electrical, Alarms											
Electrical outlets and communication system receptacles mounting height.	No less than 15" high and no more than 48" above floor to center line of receptacle.	Electrical outlet mounted at 13 1/2" high.		ADAAG: 4.27.3  T24: 210-7(g)C.E.C. Chapter 2	Relocate electrical outlet or communication system receptacle to accessible height when modernizing the facility.	1	JOB	\$280	\$280	4	
Fire alarm pull station controls and operating systems.	Unit shall be able to be activated with a closed fist or flalled hand, with a maximum force of 5 lbs. without requiring pinching, twisting or grasping.	Fire alarm pull not accessible type, mounted at 54" high.		ADAAG: 4.27.4  T24: 1117B.6.4	Provide a new fire alarm pull station with compliant operating mechanism, mounted at an accessible height when modernizing the facility.	1	JOB	\$225	\$225	2	



14-Apr-08

**Eastside Branch Library**  
**FIRST FLOOR**


ITEM/ LOCATION	CONDITION BARRIER	REQUIREMENT	EXISTING CONDITION	CODE REFERENCE	SUGGESTED RECOMMENDATION	QTY	UNIT TYPE	UNIT COST	TOTAL COST	PR	IMPL DATE
Emergency warning systems when facility has a fire alarm system.		Audible and visual signal (strobe lights) required at restrooms, meeting rooms, hallways, lobbies and any other type of common use area.	Strobe light provided has red cover. Photo #: 4	ADAAG: 4.1.3(14); 4.28.1 through 3 T24: 1114B.2.4	Provide new strobe light with clear or white cover.	1	JOB	\$500	\$500	2	
<b>Signage</b>											
Fire exit signs.		Raised letters & Braille, on wall adjacent to latch side of door, 60" above floor, contrasting color, no obstacles within 3" of sign.	No fire "EXIT" sign provided.	ADAAG: 4.1.2(7); 4.30.4 & 4.40.5 T24: 1117B.5.3; 1117B.5.4	Provide tactile and Braille fire exit signage.	1	JOB	\$120	\$120	2	
Braille entrance/exit sign.		Raised letters & Braille, on wall adjacent to latch side of door, 60" above floor, contrasting color, no obstacles within 3" of sign.	No Tactile/Braille entrance sign.	ADAAG: 4.1.2(7) (c); 4.30.4 & 4.40.5 T24: 1117B.5.3; 1117B.5.4	Provide tactile Braille entrance/exit signage.	1	JOB	\$100	\$100	1	
Facilities and elements required to be identified as accessible.		Provide the international symbol of accessibility.	No ISA sign at entrance.	ADAAG: 4.30.7 T24: 1117B.5.1	Provide sign with the international symbol of accessibility to identify the accessible facility or element.	1	JOB	\$50	\$50	1	

14-Apr-08

**Eastside Branch Library**  
**FIRST FLOOR**


ITEM/ LOCATION	CONDITION BARRIER	REQUIREMENT	EXISTING CONDITION	CODE REFERENCE	SUGGESTED RECOMMENDATION	QTY	UNIT TYPE	UNIT COST	TOTAL COST	PR	IMPL DATE
-------------------	----------------------	-------------	-----------------------	-------------------	-----------------------------	-----	--------------	--------------	---------------	----	--------------

**Walks and Sidewalks**

Smooth surface, no excessive irregular surfaces.	Yes		Ceramic tile surface is not slip resistant and not a smooth surface. Photo #: 3	ADAAG: 4.5.2  T24: 1133B.7.1	Repave area to provide smooth accessible route surface.	552	SF	\$28	\$15,456	3	
--	-----	--	--	------------------------------------	---	-----	----	------	----------	---	--

**2 Corridor****\$5,820****Drinking Fountains**

Drinking Fountain mounting space requirements at wall and post mounted units.	Drinking fountain bubbler outlet orifice height shall be 36" max. mounted less than 17"-19" deep.	Drinking fountain does not have the required knee clearance, mounted at 26 1/2". - bubbler 34" high.	ADAAG: 4.15.5(1) & Fig.27(a)  T24: 1507.3.1	Provide new accessible hi and low drinking fountain with wing walls.	1	JOB	\$4,200	\$4,200	4	
---	---	--	---	--	---	-----	---------	---------	---	--

**Doors**

Door closers, pressure to open interior or exterior doors.	5 lbs. max. effort to open, closing time 3 seconds from 70 degree position and door stops 3" before latch, or provide automatic door openers.	Door force to open 12 lbs., door sweep 4 secs., back check 0 secs.	ADAAG: 4.13.10 & 11  T24: 1133B.2.5 & 1133B.2.5.1	Adjust existing door closer.	1	JOB	\$100	\$100	2	
--	---	--	---	------------------------------	---	-----	-------	-------	---	--



ITEM/ LOCATION	CONDITION BARRIER	REQUIREMENT	EXISTING CONDITION	CODE REFERENCE	SUGGESTED RECOMMENDATION	QTY	UNIT TYPE	UNIT COST	TOTAL COST	PR	IMPL DATE
Door closers, pressure to open interior or exterior doors.	5 lbs. max. effort to open, closing time 3 seconds from 70 degree position and door stops 3" before latch, or provide automatic door openers.	Door force to open 15 lbs., door sweep 4 secs., back check 0 secs.	ADAAG: 4.13.10 & 11  T24: 1133B.2.5 & 1133B.2.5.1	Adjust existing door closer.	1	JOB	\$100	\$100	2		
<b>Electrical, Alarms</b>											
Emergency warning systems when facility has a fire alarm system.	Audible and visual signal (strobe lights) required at restrooms, meeting rooms, hallways, lobbies and any other type of common use area.	No strobe light.	ADAAG: 4.1.3(14); 4.28.1 through 3 T24: 1114B.2.4	Provide audible and visual alarm signals connected to the existing fire alarm system.	1	JOB	\$1,200	\$1,200	2		
<b>Signage</b>											
Fire exit signs.	Raised letters & Braille, on wall adjacent to latch side of door, 60" above floor, contrasting color, no obstacles within 3" of sign.	No fire "EXIT" sign provided. Photo #: 6	ADAAG: 4.1.2(7); 4.30.4 & 4.40.5 T24: 1117B.5.3; 1117B.5.4	Provide tactile and Braille fire exit signage.	1	JOB	\$120	\$120	2		
Braille entrance/exit sign.	Raised letters & Braille, on wall adjacent to latch side of door, 60" above floor, contrasting color, no obstacles within 3" of sign.	No Tactile/Braille entrance sign.	ADAAG: 4.1.2(7) (c); 4.30.4 & 4.40.5 T24: 1117B.5.3; 1117B.5.4	Provide tactile Braille entrance/exit signage.	1	JOB	\$100	\$100	1		

14-Apr-08

**Eastside Branch Library**  
**FIRST FLOOR**


ITEM/ LOCATION	CONDITION BARRIER	REQUIREMENT	EXISTING CONDITION	CODE REFERENCE	SUGGESTED RECOMMENDATION	QTY	UNIT TYPE	UNIT COST	TOTAL COST	PR	IMPL DATE
3 Men's Restroom										\$2,950	
Doors											
Door closers, pressure to open interior or exterior doors.	5 lbs. max. effort to open, closing time 3 seconds from 70 degree position and door stops 3" before latch, or provide automatic door openers.	Door force to open 8 lbs., door sweep 5 secs., back check 0 secs.	ADAAG: 4.13.10 & 11  T24: 1133B.2.5 & 1133B.2.5.1	Adjust existing door closer.	1	JOB	\$100	\$100	2		
Sanitary Facilities											
Water closet distance to adjacent wall.	Locate water closet 18" from centerline of fixture to adjacent wall.	18 1/4" from centerline of water closet to wall.	ADAAG: 4.17.3  T24: 1115B.7.2	A 1/4" can be considered a construction tolerance.	REF.		\$0		4		
Adult: Toilet stall grab bars.	Grab bars shall be mounted at height 33" to centerline. Back grab bar 36" min. located 6" from side wal. Side grab bar shall extend 24" in front of water closet or 54" from back wall.	Back grab bar mounted at 35" from the wall.  Photo #: 9	ADAAG: 4.17.6; 4.17.4; Figs. 29 and 30  T24: CBC 1115.8.1	Relocate grab bar.	1	JOB	\$300	\$300	4		
Urinals height.	Urinal rim shall be elongated mounted at 17" high max.	Urinal rim at 18" high.	ADAAG: 4.18.2  T24: N/A	Lower urinal to 17" high maximum.	1	JOB	\$2,000	\$2,000	4		



14-Apr-08

# Eastside Branch Library

## FIRST FLOOR



ITEM/ LOCATION	CONDITION BARRIER	REQUIREMENT	EXISTING CONDITION	CODE REFERENCE	SUGGESTED RECOMMENDATION	QTY	UNIT TYPE	UNIT COST	TOTAL COST	PR	IMPL DATE
Adult: Stall toilet paper dispensers.		Toilet paper dispensers shall be installed within reach, ADAAG. Toilet paper dispensers shall be installed within 12" of front edge of toilet seat, T-24. Mounting height 19" min. to centerline. Max. protrusion from the wall 3" (DSA Policy 99-07).	Toilet paper dispenser mounted at 18" high to the centerline.	ADAAG: 4.16.6  T24: 1115B.9.3	Raised toilet paper dispenser to accessible height.	1	JOB	\$350	\$350	4	
Adult: Coat hook.		Coat hook not within accessible reach range.	Coat hook mounted at 50 1/2" high.	ADAAG: 4.2.5  T24: (1110B.1.7)	Lower coat hook.	1	JOB	\$50	\$50	4	
<b>Signage</b>											
Permanent room & space signs.		Raised letters & Braille, on wall adjacent to latch side of door, 60" above floor, contrasting color, no obstacles within 3" of sign.	Sign has regular Braille instead of Contracted Grade 2 Braille.	ADAAG: 4.1.2(7); 4.30.4 & 4.40.5  T24: 1117B.5.9; 1117B.5.6	Provide the required tactile permanent room signage.	1	JOB	\$100	\$100	3	
Women's, Men's, Unisex door restrooms signs.		Women's circle 1/4" thick, 12" in diameter. Men's equilateral triangle 1/4" thick, edges 12" long & vertex upward. Unisex 1/4" thick superimposed on & within circle 1/4" thick 12" diameter.	Men's restroom door sign mounted at 63 1/4" high to center line of sign. Photo #: 7	ADAAG:  T24: 1115B.5	Remount sign to compliant height.	1	JOB	\$50	\$50	4	

14-Apr-08

**Eastside Branch Library**  
**FIRST FLOOR**


ITEM/ LOCATION	CONDITION BARRIER	REQUIREMENT	EXISTING CONDITION	CODE REFERENCE	SUGGESTED RECOMMENDATION	QTY	UNIT TYPE	UNIT COST	TOTAL COST	PR	IMPL DATE
4 Women's Restroom										\$1,200	
Doors											
Door closers, pressure to open interior or exterior doors.	5 lbs. max. effort to open, closing time 3 seconds from 70 degree position and door stops 3" before latch, or provide automatic door openers.	Door force to open 6 lbs., door sweep 7 secs., back check 0 secs.	ADAAG: 4.13.10 & 11  T24: 1133B.2.5 & 1133B.2.5.1	Adjust existing door closer.	1	JOB	\$100	\$100	2		
Cabinet or storage door opening hardware, type.	Touch latches and U-shaped pulls or other operable hardware with single effort without requiring tight grasping.	Baby changing operable mechanism required tight grasping to operate. Table mounted at 36" high.  Photo #: 8	ADAAG: 4.13.9  T24: 1125B.4	Provide a compliant operable mechanism and lower mounting height.	1	JOB	\$300	\$300	3		
Sanitary Facilities											
Water closet seat height.	Water closet seat height 17" to 19".	Water closet seat 19 1/4" high.	ADAAG: 4.16.3  T24: 1502 C.P.C.	A 1/4" can be considered a construction tolerance.	REF.		\$0		4		

14-Apr-08

**Eastside Branch Library**  
**FIRST FLOOR**


ITEM/ LOCATION	CONDITION BARRIER	REQUIREMENT	EXISTING CONDITION	CODE REFERENCE	SUGGESTED RECOMMENDATION	QTY	UNIT TYPE	UNIT COST	TOTAL COST	PR	IMPL DATE
Water Closet flush valves.		Controls for flush valves shall be mounted on the wide side of toilet areas no more than 44" (1120 mm) AFF.	Automatic flush valve is mounted too close to grab bar. Photo #: 9	ADAAG: 4.16.5  T24: N/A	Raised grab bar to provide a minimum 1 1/2" distance to flush valve.	1	JOB	\$300	\$300	4	
Water closet distance to adjacent wall.		Locate water closet 18" from centerline of fixture to adjacent wall.	18 3/8" from centerline of water closet to wall.	ADAAG: 4.17.3  T24: 1115B.7.2	A 3/8" can be considered a construction tolerance.	REF.		\$0		4	
Adult: Toilet stall grab bars.		Grab bars shall be mounted at height 33" to centerline. Back grab bar 36" min. located 6" from side wal. Side grab bar shall extend 24" in front of water closet or 54" from back wall.	Side grab bar is mounted 2" from the wall with the total projection of 50" from the back wall instead of 54" required.	ADAAG: 4.17.6; 4.17.4; Figs. 29 and 30  T24: CBC 1115.8.1	Relocate grab bar.	1	JOB	\$300	\$300	4	
Adult: Coat hook.		Coat hook not within accessible reach range.	Coat hook mounted at 50" high.	ADAAG: 4.2.5  T24: (1110B.1.7)	Lower coat hook.	1	JOB	\$50	\$50	2	

14-Apr-08

**Eastside Branch Library**  
**FIRST FLOOR**


ITEM/ LOCATION	CONDITION BARRIER	REQUIREMENT	EXISTING CONDITION	CODE REFERENCE	SUGGESTED RECOMMENDATION	QTY	UNIT TYPE	UNIT COST	TOTAL COST	PR	IMPL DATE
<b>Signage</b>											
Women's, Men's, Unisex door restrooms signs.		Women's circle 1/4" thick, 12" in diameter. Men's equilateral triangle 1/4" thick, edges 12" long & vertex upward. Unisex 1/4" thick superimposed on & within circle 1/4" thick 12" diameter.	Women's restroom door sign mounted at 63" high to center line of sign.	ADAAG:  T24: 1115B.5	Remount sign to compliant height.	1	JOB	\$50	\$50	4	
Permanent room & space signs.		Raised letters & Braille, on wall adjacent to latch side of door, 60" above floor, contrasting color, no obstacles within 3" of sign.	Sign has regular Braille instead of Contracted Grade 2 Braille.	ADAAG: 4.1.2(7); 4.30.4 & 4.40.5  T24: 1117B.5.9; 1117B.5.6	Provide the required tactile permanent room signage.	1	JOB	\$100	\$100	3	
<b>5 Mechanical</b>										<b>\$490</b>	

**Doors**

Door opening hardware, type.	Lever type, panic bars, push-pull or other operable hardware with single effort without requiring tight grasping.	Hardware not accessible type.	ADAAG: 4.13.9  T24: 1133B.2.5.1	Provide lever type or other accessible hardware, mounted between 36" to 44" high.	1	JOB	\$390	\$390	2	
------------------------------	---	-------------------------------	---------------------------------------	---	---	-----	-------	-------	---	--



14-Apr-08

**Eastside Branch Library**  
**FIRST FLOOR**


ITEM/ LOCATION	CONDITION BARRIER	REQUIREMENT	EXISTING CONDITION	CODE REFERENCE	SUGGESTED RECOMMENDATION	QTY	UNIT TYPE	UNIT COST	TOTAL COST	PR	IMPL DATE
-------------------	----------------------	-------------	-----------------------	-------------------	-----------------------------	-----	--------------	--------------	---------------	----	--------------

**Signage**

Permanent room & space signs.		Raised letters & Braille, on wall adjacent to latch side of door, 60" above floor, contrasting color, no obstacles within 3" of sign.	None.	ADAAG: 4.1.2(7); 4.30.4 & 4.40.5 T24: 1117B.5.9; 1117B.5.6	Provide the required tactile permanent room signage.	1	JOB	\$100	\$100	3	
-------------------------------	--	---	-------	---	--	---	-----	-------	-------	---	--

**6 Telephone****\$200****Reach Ranges**

Forward approach reach range to objects or controls.	Mounting height 48" or less than 15" high, when clear space allows only forward approach.	Telephone coin slot mounted at 53" high.		ADAAG: 4.2.5 T24: 1118B.5	Lower telephone to provide compliant reach range to coin slot at 48" high maximum.	1	JOB	\$200	\$200	3	
--	---	--	--	------------------------------	--	---	-----	-------	-------	---	--

**7 Electrical - Storage - 110****\$490****Doors**

Door opening hardware, type.	Lever type, panic bars, push-pull or other operable hardware with single effort without requiring tight grasping.	Hardware not accessible type.		ADAAG: 4.13.9 T24: 1133B.2.5.1	Provide lever type or other accessible hardware, mounted between 36" to 44" high.	1	JOB	\$390	\$390	2	
------------------------------	---	-------------------------------	--	-----------------------------------	---	---	-----	-------	-------	---	--

14-Apr-08

**Eastside Branch Library**  
**FIRST FLOOR**


ITEM/ LOCATION	CONDITION BARRIER	REQUIREMENT	EXISTING CONDITION	CODE REFERENCE	SUGGESTED RECOMMENDATION	QTY	UNIT TYPE	UNIT COST	TOTAL COST	PR	IMPL DATE
Signage											
Permanent room & space signs.		Raised letters & Braille, on wall adjacent to latch side of door, 60" above floor, contrasting color, no obstacles within 3" of sign.	None.	ADAAG: 4.1.2(7); 4.30.4 & 4.40.5 T24: 1117B.5.9; 1117B.5.6	Provide the required tactile permanent room signage.	1	JOB	\$100	\$100	3	
8 Storage - 112										\$490	
Doors											
Door opening hardware, type.		Lever type, panic bars, push-pull or other operable hardware with single effort without requiring tight grasping.	Hardware not accessible type.	ADAAG: 4.13.9 T24: 1133B.2.5.1	Provide lever type or other accessible hardware, mounted between 36" to 44" high.	1	JOB	\$390	\$390	2	
Signage											
Permanent room & space signs.		Raised letters & Braille, on wall adjacent to latch side of door, 60" above floor, contrasting color, no obstacles within 3" of sign.	None.	ADAAG: 4.1.2(7); 4.30.4 & 4.40.5 T24: 1117B.5.9; 1117B.5.6	Provide the required tactile permanent room signage.	1	JOB	\$100	\$100	3	

14-Apr-08

**Eastside Branch Library**  
**FIRST FLOOR**


ITEM/ LOCATION	CONDITION BARRIER	REQUIREMENT	EXISTING CONDITION	CODE REFERENCE	SUGGESTED RECOMMENDATION	QTY	UNIT TYPE	UNIT COST	TOTAL COST	PR	IMPL DATE
9 Classroom - 111										\$5,495	
Doors											
Surface doormats.		Must be anchored to prevent interference with wheelchair traffic.	Loose doormat.	ADAAG: 4.5.3  T24: 1133B.1.1.1.3;Fig. 11B-25	Anchor doormat to floor or remove it.	1	JOB	\$100	\$100	2	
Door closers, pressure to open interior or exterior doors.		5 lbs. max. effort to open, closing time 3 seconds from 70 degree position and door stops 3" before latch, or provide automatic door openers.	Door force to open 12 lbs., door sweep 4 secs., back check 0 secs.	ADAAG: 4.13.10 & 11  T24: 1133B.2.5 & 1133B.2.5.1	Adjust existing door closer.	1	JOB	\$100	\$100	2	
Door closers, pressure to open interior or exterior doors.		5 lbs. max. effort to open, closing time 3 seconds from 70 degree position and door stops 3" before latch, or provide automatic door openers.	Door force to open 10 lbs., door sweep 4 secs., back check 0 secs.	ADAAG: 4.13.10 & 11  T24: 1133B.2.5 & 1133B.2.5.1	Adjust existing door closer.	1	JOB	\$100	\$100	2	
Door opening hardware, type.		Lever type, panic bars, push-pull or other operable hardware with single effort without requiring tight grasping.	Hardware not accessible type.	ADAAG: 4.13.9  T24: 1133B.2.5.1	Provide lever type or other accessible hardware, mounted between 36" to 44" high.	1	JOB	\$390	\$390	2	



ITEM/ LOCATION	CONDITION BARRIER	REQUIREMENT	EXISTING CONDITION	CODE REFERENCE	SUGGESTED RECOMMENDATION	QTY	UNIT TYPE	UNIT COST	TOTAL COST	PR	IMPL DATE
Bottom Kick plate-door stop.	10" high min. smooth, uninterrupted surface at push side of doors on accessible route. (CA only). Except for automatic & sliding doors.	Door stop mounted at kick plate area.	ADAAG:  T24: 1133B.2.6; Fig. 11B-29	Remove door stop when altering area. Provide wall mounted door stop.	1	JOB	\$40	\$40	2		
<b>Electrical, Alarms</b>											
Fire alarm pull station controls and operating systems.	Unit shall be able to be activated with a closed fist or flalled hand, with a maximum force of 5 lbs. without requiring pinching, twisting or grasping.	Fire alarm pull not accessible type, mounted at 56" high.	ADAAG: 4.27.4  T24: 1117B.6.4	Provide a new fire alarm pull station with compliant operating mechanism, mounted at an accessible height when modernizing the facility.	1	JOB	\$225	\$225	2		
Emergency warning systems when facility has a fire alarm system.	Audible and visual signal (strobe lights) required at restrooms, meeting rooms, hallways, lobbies and any other type of common use area.	Strobe light provided has red cover.	ADAAG: 4.1.3(14); 4.28.1 through 3 T24: 1114B.2.4	Provide new strobe light with clear or white cover.	1	JOB	\$500	\$500	2		
<b>Hazards/Protruding Objects</b>											
Protruding objects 4" max. from wall into path of travel.	Protruding objects with leading edges between 27"& 80" above finished floor may protrude 4" max. from wall into path of travel.	TV protrudes 33" from the wall at 63" high above finish floor.	ADAAG: 4.4.1  T24: 1121B.1; Fig 11B-7A	Remove, relocate protruding object or provide cane detectable rail or edge between 27" and 80" above finish floor. Patch existing surface as needed.	1	JOB	\$100	\$100	1		





ITEM/ LOCATION	CONDITION BARRIER	REQUIREMENT	EXISTING CONDITION	CODE REFERENCE	SUGGESTED RECOMMENDATION	QTY	UNIT TYPE	UNIT COST	TOTAL COST	PR	IMPL DATE
<b>Reach Ranges</b>											
Forward approach reach range to objects or controls.		Mounting height 48" or less than 15" high, when clear space allows only forward approach.	Thermostat control mounted at 60" high.	ADAAG: 4.2.5 T24: 1118B.5	Relocate object or modify equipment mounting height to be within forward reach range.	1	JOB	\$100	\$100	4	
<b>Signage</b>											
Fire exit signs.		Raised letters & Braille, on wall adjacent to latch side of door, 60" above floor, contrasting color, no obstacles within 3" of sign.	No fire "EXIT ROUTE" sign provided.	ADAAG: 4.1.2(7); 4.30.4 & 4.40.5 T24: 1117B.5.3; 1117B.5.4	Provide tactile and Braille fire exit signage.	1	JOB	\$120	\$120	2	
Fire exit signs.		Raised letters & Braille, on wall adjacent to latch side of door, 60" above floor, contrasting color, no obstacles within 3" of sign.	No fire "EXIT" sign provided.	ADAAG: 4.1.2(7); 4.30.4 & 4.40.5 T24: 1117B.5.3; 1117B.5.4	Provide tactile and Braille fire exit signage.	1	JOB	\$120	\$120	2	
Permanent room & space signs.		Raised letters & Braille, on wall adjacent to latch side of door, 60" above floor, contrasting color, no obstacles within 3" of sign.	None.	ADAAG: 4.1.2(7); 4.30.4 & 4.40.5 T24: 1117B.5.9; 1117B.5.6	Provide the required tactile permanent room signage.	1	JOB	\$100	\$100	3	

14-Apr-08

**Eastside Branch Library  
FIRST FLOOR**


ITEM/ LOCATION	CONDITION BARRIER	REQUIREMENT	EXISTING CONDITION	CODE REFERENCE	SUGGESTED RECOMMENDATION	QTY	UNIT TYPE	UNIT COST	TOTAL COST	PR	IMPL DATE
-------------------	----------------------	-------------	-----------------------	-------------------	-----------------------------	-----	--------------	--------------	---------------	----	--------------

**Work Surfaces**

Service counter stand-up service, height.	Accessible section 36" wide min., 36" high max. California requirement 28"-34" high max.	Podium does not have knee clearance, mounted at 46" high.	ADAAG: 7.2  T24: 1122B.4	Provide new low podium with compliant knee clearance.	1	JOB	\$3,500	\$3,500	1
---	--	---	--------------------------------	---	---	-----	---------	---------	---

**10 Library - 102****\$10,205****Classrooms**

Non-fixed desks or study benches.	Minimum one accessible non-fixed tabled, desk/study bench or 5% of all desks/study benches. Height shall be between 28" to 34" and have knee clearance. 24" knee clearance recommended for elementary school age.	Library catalog computer does not have the required knee clearance and is mounted at 35" high.  Photo #: 14	ADAAG: N/A  T24: CBC 1106.B3 DSA School Modernization Policy 98-02.3	Provide new compliant computer table.	1	JOB	\$500	\$500	2
Non-fixed desks or study benches.	Minimum one accessible non-fixed tabled, desk/study bench or 5% of all desks/study benches. Height shall be between 28" to 34" and have knee clearance. 24" knee clearance recommended for elementary school age.	Computer desk does not have the require knee clearance - 25" high.	ADAAG: N/A  T24: CBC 1106.B3 DSA School Modernization Policy 98-02.3	Raise legs to provide a compliant computer desk.	1	JOB	\$50	\$50	4

14-Apr-08

**Eastside Branch Library**  
**FIRST FLOOR**


ITEM/ LOCATION	CONDITION BARRIER	REQUIREMENT	EXISTING CONDITION	CODE REFERENCE	SUGGESTED RECOMMENDATION	QTY	UNIT TYPE	UNIT COST	TOTAL COST	PR	IMPL DATE
Non-fixed desks or study benches.		Minimum one accessible non-fixed tabled, desk/study bench or 5% of all desks/study benches. Height shall be between 28" to 34" and have knee clearance. 24" knee clearance recommended for elementary school age.	Reading table does not have the require knee clearance. - 26 1/2" high.	ADAAG: N/A  T24: CBC 1106.B3 DSA School Modernization Policy 98-02.3	Raise legs to provide a compliant reading table.	1	JOB	\$50	\$50	4	
<b>Corridor</b>											
Corridor width, occupant load of 10 people or more.		Corridor minimum clear width shall be 44" wide.	Path of travel to counter is 29 1/2" wide instead to the required 36" wide.  Photo #: 10	ADAAG: 4.3.3  T24: 3305 (b) 1	Remove bookcases to provide compliant width.	1	JOB	\$50	\$50	2	
<b>Doors</b>											
Surface doormats.		Must be anchored to prevent interference with wheelchair traffic.	Loose doormat.	ADAAG: 4.5.3  T24: 1133B.1.1.1.3;Fig. 11B-25	Anchor doormat to floor or remove it.	2	JOB	\$100	\$200	2	

14-Apr-08

**Eastside Branch Library**  
**FIRST FLOOR**


ITEM/ LOCATION	CONDITION BARRIER	REQUIREMENT	EXISTING CONDITION	CODE REFERENCE	SUGGESTED RECOMMENDATION	QTY	UNIT TYPE	UNIT COST	TOTAL COST	PR	IMPL DATE
Interior doors strike side clearance at pull side hinge approach.	Strike side clearance 36" min.	5" interior strike push side clearance to wall due to the location of atlases free standing bookcase.	ADAAG: 4.13.6 Fig. 25  T24: 1133B.2.4.2; Fig 11B-26A (b)	Relocate free standing bookcase.	1	JOB	\$50	\$50	2		
Door closers, pressure to open interior or exterior doors.	5 lbs. max. effort to open, closing time 3 seconds from 70 degree position and door stops 3" before latch, or provide automatic door openers.	Door force to open 12 lbs., door sweep 3 secs., back check 1 secs.	ADAAG: 4.13.10 & 11  T24: 1133B.2.5 & 1133B.2.5.1	Adjust existing door closer.	1	JOB	\$100	\$100	2		
Door closers, pressure to open interior or exterior doors.	5 lbs. max. effort to open, closing time 3 seconds from 70 degree position and door stops 3" before latch, or provide automatic door openers.	Door force to open 13 lbs., door sweep 2 secs., back check 0 secs.	ADAAG: 4.13.10 & 11  T24: 1133B.2.5 & 1133B.2.5.1	Adjust existing door closer.	1	JOB	\$100	\$100	2		
Door closers, pressure to open interior or exterior doors.	5 lbs. max. effort to open, closing time 3 seconds from 70 degree position and door stops 3" before latch, or provide automatic door openers.	Door force to open 12 lbs., door sweep 2 secs., back check 1 secs.	ADAAG: 4.13.10 & 11  T24: 1133B.2.5 & 1133B.2.5.1	Adjust existing door closer.	1	JOB	\$100	\$100	2		



14-Apr-08

**Eastside Branch Library**  
**FIRST FLOOR**


ITEM/ LOCATION	CONDITION BARRIER	REQUIREMENT	EXISTING CONDITION	CODE REFERENCE	SUGGESTED RECOMMENDATION	QTY	UNIT TYPE	UNIT COST	TOTAL COST	PR	IMPL DATE
Door opening hardware, pull side-type.	U-shaped pulls or other operable hardware with single effort without requiring tight grasping.	Fire extinguisher does not have compliant hardware, mounted at 58" high - blocked by bookshelf.	ADAAG: 4.13.9  T24: 1133B.2.5.1	Provide U-shaped pulls or other accessible hardware, mounted between 30" to 44" high.	1	JOB	\$250	\$250	2		
Door opening hardware, location.	30" to 44" above floor.	Deadbolt mounted at 50 1/2" high requires tight grasping to operate.	ADAAG: 4.13.9  T24: 1133B.2.5.1	Provide a new lower compliant type deadbolt.	1	JOB	\$250	\$250	2		
Bottom Kick plate-door stop.	10" high min. smooth, uninterrupted surface at push side of doors on accessible route. (CA only). Except for automatic & sliding doors.	Door stop mounted at kick plate area.	ADAAG:  T24: 1133B.2.6; Fig. 11B-29	Remove door stop when altering area. Provide wall mounted door stop.	1	JOB	\$40	\$40	2		
Electrical, Alarms											
Electrical outlets and communication system receptacles mounting height.	No less than 15" high and no more than 48" above floor to center line of receptacle.	Electrical outlet mounted at 3" high.	ADAAG: 4.27.3  T24: 210-7(g)C.E.C. Chapter 2	Relocate electrical outlet or communication system receptacle to accessible height when modernizing the facility.	1	JOB	\$280	\$280	4		

14-Apr-08

**Eastside Branch Library**  
**FIRST FLOOR**


ITEM/ LOCATION	CONDITION BARRIER	REQUIREMENT	EXISTING CONDITION	CODE REFERENCE	SUGGESTED RECOMMENDATION	QTY	UNIT TYPE	UNIT COST	TOTAL COST	PR	IMPL DATE
Fire alarm pull station controls and operating systems.		Unit shall be able to be activated with a closed fist or flalled hand, with a maximum force of 5 lbs. without requiring pinching, twisting or grasping.	Fire alarm pull not accessible type, mounted at 54" high. Photo #: 15	ADAAG: 4.27.4  T24: 1117B.6.4	Provide a new fire alarm pull station with compliant operating mechanism, mounted at an accessible height when modernizing the facility.	1	JOB	\$225	\$225	2	
Emergency warning systems when facility has a fire alarm system.		Audible and visual signal (strobe lights) required at restrooms, meeting rooms, hallways, lobbies and any other type of common use area.	No strobe light.	ADAAG: 4.1.3(14); 4.28.1 through 3 T24: 1114B.2.4	Provide audible and visual alarm signals connected to the existing fire alarm system.	2	JOB	\$1,200	\$2,400	2	
Emergency warning systems when facility has a fire alarm system.		Audible and visual signal (strobe lights) required at restrooms, meeting rooms, hallways, lobbies and any other type of common use area.	Strobe light provided has red cover.	ADAAG: 4.1.3(14); 4.28.1 through 3 T24: 1114B.2.4	Provide new strobe light with clear or white cover.	1	JOB	\$500	\$500	2	
<b>Library</b>											
Study carrels or work tables.		28" to 34"high max., 36" wide min. and 27" high knee clearance.	Reading cubicles 26 1/2" knee clearance. Photo #: 12	ADAAG: 8.3  T24: 1122B.4	Provide accessible study carrels or work tables, include ISA sign.	1	JOB	\$500	\$500	2	

14-Apr-08

**Eastside Branch Library**  
**FIRST FLOOR**


ITEM/ LOCATION	CONDITION BARRIER	REQUIREMENT	EXISTING CONDITION	CODE REFERENCE	SUGGESTED RECOMMENDATION	QTY	UNIT TYPE	UNIT COST	TOTAL COST	PR	IMPL DATE
Access aisles width at work stations, open offices with low partitions	Single loaded access aisles and clear access point to all employee work areas must be 36" wide minimum. Double loaded access aisles at work stations shall be 44" wide minimum.	Aisle width 32" instead of the minimum required 36" wide.  Photo #: 11	ADAAG: ADAAG 4.1.6(2)  T24: CBC 1105B.3.2	Relocate bookcases or relocate free standing book stack.	1	JOB	\$300	\$300	2		
Access aisles width at work stations, open offices with low partitions	Single loaded access aisles and clear access point to all employee work areas must be 36" wide minimum. Double loaded access aisles at work stations shall be 44" wide minimum.	Aisle width 31 1/2" instead of the minimum required 36" wide.	ADAAG: ADAAG 4.1.6(2)  T24: CBC 1105B.3.2	Relocate bookcase.	1	JOB	\$100	\$100	2		
Signage											
Sign to provide direction to or information about facilities and or building functional spaces missing or non-compliant.	Informational sign must be mounted where visible, readable, contrasting color, when also directional in nature, include a directional arrow and the International Symbol of Accessibility. If text is included, it needs to be brief, consistent and familiar in terminology.	No Tactile/Braille room ID sign provided.	ADAAG:  T24: 1117B.5	Provide directional and/or informational sign about facilities and/or building functionality.	1	JOB	\$200	\$200	3		

14-Apr-08

# Eastside Branch Library

## FIRST FLOOR



ITEM/ LOCATION	CONDITION BARRIER	REQUIREMENT	EXISTING CONDITION	CODE REFERENCE	SUGGESTED RECOMMENDATION	QTY	UNIT TYPE	UNIT COST	TOTAL COST	PR	IMPL DATE
Informational signs.		Informational sign must be mounted where visible, readable, contrasting color - 70%, non-glare characters and background, characters proportion shall have a width-to-height ratio of between 3:5 and 1:1 and a stroke width-to-height ratio of between 1:5 and 1:10.	There is not an informational sign indicating that there is an attendant to assist retrieving books that are mounted above 54" high. Stacks mounted at 73" high.	ADAAG: 4.1.2(7); 4.30.4 & 4.40.5  T24: 1117B.5.2; 1117B.5.3; 1117B.5.4	Provide informational sign at books stacks.	1	JOB	\$120	\$120	2	
Fire exit signs.		Raised letters & Braille, on wall adjacent to latch side of door, 60" above floor, contrasting color, no obstacles within 3" of sign.	No fire "EXIT" sign provided.	ADAAG: 4.1.2(7); 4.30.4 & 4.40.5 T24: 1117B.5.3; 1117B.5.4	Provide tactile and Braille fire exit signage.	1	JOB	\$120	\$120	2	
Fire exit signs.		Raised letters & Braille, on wall adjacent to latch side of door, 60" above floor, contrasting color, no obstacles within 3" of sign.	No fire "EXIT" sign provided.	ADAAG: 4.1.2(7); 4.30.4 & 4.40.5 T24: 1117B.5.3; 1117B.5.4	Provide tactile and Braille fire exit signage.	1	JOB	\$120	\$120	2	
Permanent room & space signs.		Raised letters & Braille, on wall adjacent to latch side of door, 60" above floor, contrasting color, no obstacles within 3" of sign.	None.	ADAAG: 4.1.2(7); 4.30.4 & 4.40.5 T24: 1117B.5.9; 1117B.5.6	Provide the required tactile permanent room signage.	1	JOB	\$100	\$100	3	



14-Apr-08

**Eastside Branch Library**  
**FIRST FLOOR**


ITEM/ LOCATION	CONDITION BARRIER	REQUIREMENT	EXISTING CONDITION	CODE REFERENCE	SUGGESTED RECOMMENDATION	QTY	UNIT TYPE	UNIT COST	TOTAL COST	PR	IMPL DATE
-------------------	----------------------	-------------	-----------------------	-------------------	-----------------------------	-----	--------------	--------------	---------------	----	--------------

**Work Surfaces**

Service counter stand-up service, height.	Accessible section 36" wide min., 36" high max. California requirement 28"-34" high max.	Counter mounted at 39 1/2" high. Photo #: 13	ADAAG: 7.2 T24: 1122B.4	Lower the counter.	1	JOB	\$3,500	\$3,500	2
---	--	---	----------------------------	--------------------	---	-----	---------	---------	---

**11 Library Children's Area - 100****\$2,985****Classrooms**

Non-fixed desks or study benches.	Minimum one accessible non-fixed tabled, desk/study bench or 5% of all desks/study benches. Height shall be between 28" to 34" and have knee clearance. 24" knee clearance recommended for elementary school age.	Table does not have the required knee clearance. - 23 1/2" high. Elementary height.	ADAAG: N/A T24: CBC 1106.B3 DSA School Modernization Policy 98-02.3	Raise table to provide a compliant height.	1	JOB	\$500	\$500	4
Non-fixed desks or study benches.	Minimum one accessible non-fixed tabled, desk/study bench or 5% of all desks/study benches. Height shall be between 28" to 34" and have knee clearance. 24" knee clearance recommended for elementary school age.	Table desk does not have the required knee clearance. - 17 1/2" high. Kindergarten height.	ADAAG: N/A T24: CBC 1106.B3 DSA School Modernization Policy 98-02.3	Raise table to provide a compliant height.	1	JOB	\$500	\$500	4

14-Apr-08

**Eastside Branch Library**  
**FIRST FLOOR**


ITEM/ LOCATION	CONDITION BARRIER	REQUIREMENT	EXISTING CONDITION	CODE REFERENCE	SUGGESTED RECOMMENDATION	QTY	UNIT TYPE	UNIT COST	TOTAL COST	PR	IMPL DATE
<b>Doors</b>											
Surface doormats.		Must be anchored to prevent interference with wheelchair traffic.	Loose carpet needs to be secured.	ADAAG: 4.5.3  T24: 1133B.1.1.1.3;Fig. 11B-25	Anchor doormat to floor or remove it.	1	JOB	\$100	\$100	2	
Door closers, pressure to open interior or exterior doors.		5 lbs. max. effort to open, closing time 3 seconds from 70 degree position and door stops 3" before latch, or provide automatic door openers.	Door force to open 12 lbs., door sweep 7 secs., back check 0 secs.	ADAAG: 4.13.10 & 11  T24: 1133B.2.5 & 1133B.2.5.1	Adjust existing door closer.	1	JOB	\$100	\$100	2	
Door threshold height exceeds 1/2" including bevel section.		Change in level between 1/4" and 1/2" shall be beveled with a slope no greater than 1 unit vertical to 2 units horizontal. Change in level greater than 1/2" shall be accomplished by means of a ramp.	3/8" threshold.	ADAAG: 4.13.8 T24: 1133B.2.4.1	Remodel area to provide compliant door landing and threshold.	1	JOB	\$280	\$280	3	
Bottom Kick plate-door stop.		10" high min. smooth, uninterrupted surface at push side of doors on accessible route. (CA only). Except for automatic & sliding doors.	Door stop mounted at kick plate area.	ADAAG:  T24: 1133B.2.6; Fig. 11B-29	Remove door stop when altering area. Provide wall mounted door stop.	1	JOB	\$40	\$40	2	



ITEM/ LOCATION	CONDITION BARRIER	REQUIREMENT	EXISTING CONDITION	CODE REFERENCE	SUGGESTED RECOMMENDATION	QTY	UNIT TYPE	UNIT COST	TOTAL COST	PR	IMPL DATE
Electrical, Alarms											
Electrical outlets and communication system receptacles mounting height.	No less than 15" high and no more than 48" above floor to center line of receptacle.	Electrical outlet mounted at 4" high.	ADAAG: 4.27.3  T24: 210-7(g)C.E.C. Chapter 2	Relocate electrical outlet or communication system receptacle to accessible height when modernizing the facility.	1	JOB	\$280	\$280	4		
Fire alarm pull station controls and operating systems.	Unit shall be able to be activated with a closed fist or flalled hand, with a maximum force of 5 lbs. without requiring pinching, twisting or grasping.	Fire alarm pull not accessible type, mounted at 54" high.	ADAAG: 4.27.4  T24: 1117B.6.4	Provide a new fire alarm pull station with compliant operating mechanism, mounted at an accessible height when modernizing the facility.	1	JOB	\$225	\$225	2		
Emergency warning systems when facility has a fire alarm system.	Audible and visual signal (strobe lights) required at restrooms, meeting rooms, hallways, lobbies and any other type of common use area.	Strobe light provided has red cover.	ADAAG: 4.1.3(14); 4.28.1 through 3 T24: 1114B.2.4	Provide new strobe light with clear or white cover.	1	JOB	\$500	\$500	2		
Hazards/Protruding Objects											
Protruding objects 4" max. from wall into path of travel.	Protruding objects with leading edges between 27"& 80" above finished floor may protrude 4" max. from wall into path of travel.	TV protrudes 14" from shelf at 61" high above finish floor.	ADAAG: 4.4.1  T24: 1121B.1; Fig 11B-7A	Remove, relocate protruding object or provide cane detectable rail or edge between 27" and 80" above finish floor. Patch existing surface as needed.	1	JOB	\$100	\$100	1		

14-Apr-08

**Eastside Branch Library**  
**FIRST FLOOR**


ITEM/ LOCATION	CONDITION BARRIER	REQUIREMENT	EXISTING CONDITION	CODE REFERENCE	SUGGESTED RECOMMENDATION	QTY	UNIT TYPE	UNIT COST	TOTAL COST	PR	IMPL DATE
<b>Signage</b>											
Informational signs.		Informational sign must be mounted where visible, readable, contrasting color - 70%, non-glare characters and background, characters proportion shall have a width-to-height ratio of between 3:5 and 1:1 and a stroke width-to-height ratio of between 1:5 and 1:10.	There is not an informational sign indicating that there is an attendant to assist retrieving books that are mounted above 54" high. Stacks mounted at 62" high.	ADAAG: 4.1.2(7); 4.30.4 & 4.40.5  T24: 1117B.5.2; 1117B.5.3; 1117B.5.4	Provide informational sign at books stacks and at main counter.	2	JOB	\$120	\$240	2	
Fire exit signs.		Raised letters & Braille, on wall adjacent to latch side of door, 60" above floor, contrasting color, no obstacles within 3" of sign.	No fire "EXIT" sign provided.	ADAAG: 4.1.2(7); 4.30.4 & 4.40.5 T24: 1117B.5.3; 1117B.5.4	Provide tactile and Braille fire exit signage.	1	JOB	\$120	\$120	2	

**12 Video Room - 103**
**\$290**
**Doors**

Door opening width measured between face of door & opposite stop.	32" clear opening width when 90° open.	Path of travel to case opening is 30" wide instead to the required 36" wide.  Photo #: 16	ADAAG: 4.13.5  T24: 1133B.3.1.1.1; 1133B.2.3 Fig. 11B-33	Remove bookcases to provide compliant width.	1	JOB	\$50	\$50	2	
---	--	---	--	--	---	-----	------	------	---	--



14-Apr-08

**Eastside Branch Library**  
**FIRST FLOOR**


ITEM/ LOCATION	CONDITION BARRIER	REQUIREMENT	EXISTING CONDITION	CODE REFERENCE	SUGGESTED RECOMMENDATION	QTY	UNIT TYPE	UNIT COST	TOTAL COST	PR	IMPL DATE
-------------------	----------------------	-------------	-----------------------	-------------------	-----------------------------	-----	--------------	--------------	---------------	----	--------------

**Signage**

Informational signs.	Informational sign must be mounted where visible, readable, contrasting color - 70%, non-glare characters and background, characters proportion shall have a width-to-height ratio of between 3:5 and 1:1 and a stroke width-to-height ratio of between 1:5 and 1:10.	There is not an informational sign indicating that there is an attendant to assist retrieving videos that are mounted above 54" high. Stacks mounted at 78" high. Photo #: 16	ADAAG: 4.1.2(7); 4.30.4 & 4.40.5  T24: 1117B.5.2; 1117B.5.3; 1117B.5.4	Provide informational sign at video stacks.	2	JOB	\$120	\$240	2
----------------------	---	--	--	---	---	-----	-------	-------	---

**13 Office - 000****\$4,040****Doors**

Door opening width measured between face of door & opposite stop.	32" clear opening width when 90° open.	Door width 29 1/2".	ADAAG: 4.13.5 T24: 1133B.3.1.1.1; 1133B.2.3 Fig. 11B-33	Enlarge opening and replace door and door frame.	1	JOB	\$3,500	\$3,500	2
Door maneuvering clearances at landings.	Side approach corridor or landing clearance shall be minimum of 60" wide.	Maneuverable clearance in front of door is 37" instead of the required 60".	ADAAG: 4.2.4  T24: 1133.B.2.4.2 Fig. 11B-26A (a)	Relocate desk to provide compliant clearance.	1	JOB	\$50	\$50	2

14-Apr-08

**Eastside Branch Library**  
**FIRST FLOOR**


ITEM/ LOCATION	CONDITION BARRIER	REQUIREMENT	EXISTING CONDITION	CODE REFERENCE	SUGGESTED RECOMMENDATION	QTY	UNIT TYPE	UNIT COST	TOTAL COST	PR	IMPL DATE
Door opening hardware, type.	Lever type, panic bars, push-pull or other operable hardware with single effort without requiring tight grasping.	Hardware not accessible type.	ADAAG: 4.13.9 T24: 1133B.2.5.1	Provide lever type or other accessible hardware, mounted between 36" to 44" high.	1	JOB	\$390	\$390	2		
<b>Signage</b>											
Permanent room & space signs.	Raised letters & Braille, on wall adjacent to latch side of door, 60" above floor, contrasting color, no obstacles within 3" of sign.	None.	ADAAG: 4.1.2(7); 4.30.4 & 4.40.5 T24: 1117B.5.9; 1117B.5.6	Provide the required tactile permanent room signage.	1	JOB	\$100	\$100	3		

**14 Staff Work Area - 105**
**\$16,295**
**Doors**

Surface doormats.	Must be anchored to prevent interference with wheelchair traffic.	Loose doormat at sink.	ADAAG: 4.5.3 T24: 1133B.1.1.1.3; Fig. 11B-25	Anchor doormat to floor or remove it.	2	JOB	\$100	\$200	2	
Doors, landing at entrance exceeds maximum slope.	Level landing of maximum 2.0 % slope required at door landing.	Landing slope 2.8%.	ADAAG: 4.13.8* T24: N/A	Demolish and replace concrete apron or door landing.	100	SF	\$36	\$3,600	2	

14-Apr-08

**Eastside Branch Library**  
**FIRST FLOOR**


ITEM/ LOCATION	CONDITION BARRIER	REQUIREMENT	EXISTING CONDITION	CODE REFERENCE	SUGGESTED RECOMMENDATION	QTY	UNIT TYPE	UNIT COST	TOTAL COST	PR	IMPL DATE
Interior doors strike side clearance at push side latch approach.	24" strike clearance required at push side of interior doors.	2" interior strike push and pull sides clearance to wall.	ADAAG: 4.13.6 Fig. 25  T24: 1133B.2.4.2; Fig. 11-26B ( c)	Provide automatic door opener.	1	JOB	\$5,500	\$5,500	4		
Door closers, pressure to open interior or exterior doors.	5 lbs. max. effort to open, closing time 3 seconds from 70 degree position and door stops 3" before latch, or provide automatic door openers.	Door force to open 8 lbs., door sweep 5 secs., back check 0 secs.	ADAAG: 4.13.10 & 11  T24: 1133B.2.5 & 1133B.2.5.1	Adjust existing door closer.	1	JOB	\$100	\$100	2		
Electrical, Alarms											
Fire alarm pull station controls and operating systems.	Unit shall be able to be activated with a closed fist or flalled hand, with a maximum force of 5 lbs. without requiring pinching, twisting or grasping.	Fire alarm pull not accessible type, mounted at 54" high.	ADAAG: 4.27.4  T24: 1117B.6.4	Provide a new fire alarm pull station with compliant operating mechanism, mounted at an accessible height when modernizing the facility.	1	JOB	\$225	\$225	2		
Emergency warning systems when facility has a fire alarm system.	Audible and visual signal (strobe lights) required at restrooms, meeting rooms, hallways, lobbies and any other type of common use area.	Strobe light provided has red cover.	ADAAG: 4.1.3(14); 4.28.1 through 3 T24: 1114B.2.4	Provide new strobe light with clear or white cover.	1	JOB	\$500	\$500	2		

14-Apr-08

**Eastside Branch Library**  
**FIRST FLOOR**


ITEM/ LOCATION	CONDITION BARRIER	REQUIREMENT	EXISTING CONDITION	CODE REFERENCE	SUGGESTED RECOMMENDATION	QTY	UNIT TYPE	UNIT COST	TOTAL COST	PR	IMPL DATE
<b>Sanitary Facilities</b>											
Restroom lavatory knee clearance.	29" high, x 8" deep x 30" wide min.	Sink does not have the required knee clearance - 4" deep. Photo #: 17	ADAAG: 4.19.2  T24: 1115B.9.1 Table 1115-1	Provide a new accessible lavatory with the required knee clearance.	1	JOB	\$2,000	\$2,000	2		
Adult: Sanitary facilities dispensers and accessories.	Accessories shall be mounted 40" from floor to highest operating slot or control: towels, soap, sanitary napkins, seat covers, waste receptacles etc.	Paper towel dispenser not accessible type, mounted at 41" high.	ADAAG: 4.27  T24: 1115.B.9.2	Lower accessible restroom accessories.	1	JOB	\$350	\$350	2		
<b>Signage</b>											
Fire exit signs.	Raised letters & Braille, on wall adjacent to latch side of door, 60" above floor, contrasting color, no obstacles within 3" of sign.	No fire "EXIT" sign provided.	ADAAG: 4.1.2(7); 4.30.4 & 4.40.5 T24: 1117B.5.3; 1117B.5.4	Provide tactile and Braille fire exit signage.	1	JOB	\$120	\$120	2		
Permanent room & space signs.	Raised letters & Braille, on wall adjacent to latch side of door, 60" above floor, contrasting color, no obstacles within 3" of sign.	None.	ADAAG: 4.1.2(7); 4.30.4 & 4.40.5 T24: 1117B.5.9; 1117B.5.6	Provide the required tactile permanent room signage.	2	JOB	\$100	\$200	3		



14-Apr-08

**Eastside Branch Library**  
**FIRST FLOOR**


ITEM/ LOCATION	CONDITION BARRIER	REQUIREMENT	EXISTING CONDITION	CODE REFERENCE	SUGGESTED RECOMMENDATION	QTY	UNIT TYPE	UNIT COST	TOTAL COST	PR	IMPL DATE
-------------------	----------------------	-------------	-----------------------	-------------------	-----------------------------	-----	--------------	--------------	---------------	----	--------------

**Work Surfaces**

Service counter stand-up service, height.	Accessible section 36" wide min., 36" high max. California requirement 28"-34" high max.	Counter mounted at 33 1/4" high.	ADAAG: 7.2 T24: 1122B.4	Lower counter to compliant height.	1	JOB	\$3,500	\$3,500	2
---	--	----------------------------------	----------------------------	------------------------------------	---	-----	---------	---------	---

**15 Custodian - 108****\$490****Doors**

Door opening hardware, type.	Lever type, panic bars, push-pull or other operable hardware with single effort without requiring tight grasping.	Hardware not accessible type.	ADAAG: 4.13.9 T24: 1133B.2.5.1	Provide lever type or other accessible hardware, mounted between 36" to 44" high.	1	JOB	\$390	\$390	2
------------------------------	---	-------------------------------	-----------------------------------	---	---	-----	-------	-------	---

**Signage**

Permanent room & space signs.	Raised letters & Braille, on wall adjacent to latch side of door, 60" above floor, contrasting color, no obstacles within 3" of sign.	None.	ADAAG: 4.1.2(7); 4.30.4 & 4.40.5 T24: 1117B.5.9; 1117B.5.6	Provide the required tactile permanent room signage.	1	JOB	\$100	\$100	3
-------------------------------	---	-------	---	--	---	-----	-------	-------	---

14-Apr-08

**Eastside Branch Library**  
**FIRST FLOOR**


ITEM/ LOCATION	CONDITION BARRIER	REQUIREMENT	EXISTING CONDITION	CODE REFERENCE	SUGGESTED RECOMMENDATION	QTY	UNIT TYPE	UNIT COST	TOTAL COST	PR	IMPL DATE
16 Storage										\$150	
Doors											
Interior doors strike side clearance at pull side front approach.	Strike side clearance 18" min.	3" doors strike clearance at pull side, due to the location of shelf.	ADAAG: 4.13.6 Fig. 25 ( c )  T24: 1133B.2.4.2; Fig 11B-26A (a)	Relocate shelf.	1	JOB	\$50	\$50	2		
Signage											
Permanent room & space signs.	Raised letters & Braille, on wall adjacent to latch side of door, 60" above floor, contrasting color, no obstacles within 3" of sign.	None.	ADAAG: 4.1.2(7); 4.30.4 & 4.40.5 T24: 1117B.5.9; 1117B.5.6	Provide the required tactile permanent room signage.	1	JOB	\$100	\$100	3		
17 Staff Toilet - 102										\$1,810	
Doors											
Door opening hardware, type.	Lever type, panic bars, push-pull or other operable hardware with single effort without requiring tight grasping.	Hardware not accessible type.	ADAAG: 4.13.9  T24: 1133B.2.5.1	Provide lever type or other accessible hardware, mounted between 36" to 44" high.	1	JOB	\$390	\$390	2		

14-Apr-08

**Eastside Branch Library**  
**FIRST FLOOR**


ITEM/ LOCATION	CONDITION BARRIER	REQUIREMENT	EXISTING CONDITION	CODE REFERENCE	SUGGESTED RECOMMENDATION	QTY	UNIT TYPE	UNIT COST	TOTAL COST	PR	IMPL DATE
<b>Electrical, Alarms</b>											
Emergency warning systems when facility has a fire alarm system.		Audible and visual signal (strobe lights) required at restrooms, meeting rooms, hallways, lobbies and any other type of common use area.	No strobe light.	ADAAG: 4.1.3(14); 4.28.1 through 3 T24: 1114B.2.4	Provide audible and visual alarm signals connected to the existing fire alarm system.	1	JOB	\$1,200	\$1,200	2	
<b>Signage</b>											
Directional sign to accessible facilities or elements.		Directional sign must be mounted where visible, readable, contrasting color, and include a directional arrow and the International Symbol of Accessibility. If text is included, it needs to be brief, consistent and familiar in terminology.	Not directional sign provided to accessible restrooms.	ADAAG: 4.1.2(7); 4.30  T24: 1117B.5.1; 1117B.5.2	Provide a sign with a directional arrow pointing to accessible facilities or elements and the International Symbol of Accessibility.	1	JOB	\$120	\$120	3	
Permanent room & space signs.		Raised letters & Braille, on wall adjacent to latch side of door, 60" above floor, contrasting color, no obstacles within 3" of sign.	None.	ADAAG: 4.1.2(7); 4.30.4 & 4.40.5 T24: 1117B.5.9; 1117B.5.6	Provide the required tactile permanent room signage.	1	JOB	\$100	\$100	3	

14-Apr-08

**Eastside Branch Library**  
**FIRST FLOOR**


ITEM/ LOCATION	CONDITION BARRIER	REQUIREMENT	EXISTING CONDITION	CODE REFERENCE	SUGGESTED RECOMMENDATION	QTY	UNIT TYPE	UNIT COST	TOTAL COST	PR	IMPL DATE
18 Staff Kitchen - 106										\$4,380	
Doors											
Surface doormats.	Must be anchored to prevent interference with wheelchair traffic.	Loose doormat.		ADAAG: 4.5.3 T24: 1133B.1.1.1.3;Fig. 11B-25	Anchor doormat to floor or remove it.	1	JOB	\$100	\$100	2	
Electrical, Alarms											
Electrical outlets and communication system receptacles mounting height.	No less than 15" high and no more than 48" above floor to center line of receptacle.	Electrical outlet mounted at 14 1/2" high.		ADAAG: 4.27.3 T24: 210-7(g)C.E.C. Chapter 2	Relocate electrical outlet or communication system receptacle to accessible height when modernizing the facility.	1	JOB	\$280	\$280	4	
Emergency warning systems when facility has a fire alarm system.	Audible and visual signal (strobe lights) required at restrooms, meeting rooms, hallways, lobbies and any other type of common use area.	No strobe light.		ADAAG: 4.1.3(14); 4.28.1 through 3 T24: 1114B.2.4	Provide audible and visual alarm signals connected to the existing fire alarm system.	1	JOB	\$1,200	\$1,200	2	



14-Apr-08

**Eastside Branch Library**  
**FIRST FLOOR**


ITEM/ LOCATION	CONDITION BARRIER	REQUIREMENT	EXISTING CONDITION	CODE REFERENCE	SUGGESTED RECOMMENDATION	QTY	UNIT TYPE	UNIT COST	TOTAL COST	PR	IMPL DATE
<b>Sanitary Facilities</b>											
Restroom lavatory knee clearance.	29" high, x 8" deep x 30" wide min.	Sink does not have the required knee clearance.	ADAAG: 4.19.2 T24: 1115B.9.1 Table 1115-1	Provide a new accessible lavatory with the required knee clearance.	1	JOB	\$2,000	\$2,000	2		
Adult: Sanitary facilities dispensers and accessories.	Accessories shall be mounted 40" from floor to highest operating slot or control: towels, soap, sanitary napkins, seat covers, waste receptacles etc.	Paper towel dispenser not accessible type, mounted at 41" high.	ADAAG: 4.27 T24: 1115.B.9.2	Lower accessible restroom accessories.	1	JOB	\$350	\$350	2		
Adult: Sanitary facilities dispensers and accessories.	Accessories shall be mounted 40" from floor to highest operating slot or control: towels, soap, sanitary napkins, seat covers, waste receptacles etc.	Soap dispenser accessible type, mounted at 41 1/2" high.	ADAAG: 4.27 T24: 1115.B.9.2	Adjust height.	1	JOB	\$350	\$350	2		
<b>Signage</b>											
Permanent room & space signs.	Raised letters & Braille, on wall adjacent to latch side of door, 60" above floor, contrasting color, no obstacles within 3" of sign.	None.	ADAAG: 4.1.2(7); 4.30.4 & 4.40.5 T24: 1117B.5.9; 1117B.5.6	Provide the required tactile permanent room signage.	1	JOB	\$100	\$100	3		

14-Apr-08

**Eastside Branch Library**  
**FIRST FLOOR**


ITEM/ LOCATION	CONDITION BARRIER	REQUIREMENT	EXISTING CONDITION	CODE REFERENCE	SUGGESTED RECOMMENDATION	QTY	UNIT TYPE	UNIT COST	TOTAL COST	PR	IMPL DATE
19 Electrical Room - 108										\$490	
Doors											
Door opening hardware, type.	Lever type, panic bars, push-pull or other operable hardware with single effort without requiring tight grasping.	Hardware not accessible type. Photo #: 18	ADAAG: 4.13.9 T24: 1133B.2.5.1	Provide lever type or other accessible hardware, mounted between 36" to 44" high.	1	JOB	\$390	\$390	2		
Signage											
Permanent room & space signs.	Raised letters & Braille, on wall adjacent to latch side of door, 60" above floor, contrasting color, no obstacles within 3" of sign.	None. Photo #: 18	ADAAG: 4.1.2(7); 4.30.4 & 4.40.5 T24: 1117B.5.9; 1117B.5.6	Provide the required tactile permanent room signage.	1	JOB	\$100	\$100	3		
Total Project Cost :									\$173,947		