

Exhibit B

Master Environmental Assessment Report



City of Santa Barbara

Environmental Assessment Mapping

Reported on 10/21/2025 03:27 PM

Parcel Number: 017-393-002

Project Address:

Case Number:

Project Description:

Visual

Visual Unique: **N/A**
Visual Hillside: **N/A**
Visual Shoreline: **N/A**

Biological

Airport Habitats: **N/A**
Airport Restoration Areas: **N/A**
Coastal Zone Resources: **N/A**
Creek and Wetland Habitats: **N/A**
Special Wildlife Areas: **N/A**
Upland Habitats - Vegetation: **URBAN**
Key Riparian Bird Habitat Areas: **N/A**
Sensitive Species_Points: **N/A**

Environmental Hazards

High Fire Hazard Areas: **N/A**
Tsunami CGS 2021: **N/A**
FEMA Flood 2023: **X**
250' Freeway Setback: **YES**
Shoreline Hazards: **N/A**
Oil Wells CalGEM 2020 50ft Buffer: **N/A**
Area Of Potential Contaminated Fill: **N/A**

Archaeological

Prehistoric Resources Period: **PREHISTORIC**
Mission Archaeological: **N/A**
Spanish Colonial & Mexican (1782-1849): **N/A**
Early American Transition Period: **N/A**
American Period: **N/A**

Noise

This service has been provided to allow a visual display of City information. Every effort has been made to ensure the accuracy of the map and data. The City of Santa Barbara assumes no responsibility arising from the use of this information. THE MAPS AND ASSOCIATED DATA ARE PROVIDED WITHOUT A WARRANTY OF ANY KIND



City of Santa Barbara

Environmental Assessment Mapping

Reported on 10/21/2025 03:27 PM

Noise: >70 DBA LDN

Geological

Geologic Units: **OLDER ALLUVIAL DEPOSITS (UPPER AND MIDDLE PLEISTOCENE)**

Radon Potential: **N/A**

Relative Landslide Potential Areas: **MODERATE**

Slope Failures Area: **N/A**

Slope Movement Classification: **N/A**

Soil Types: **MILPITAS-POSITAS FINE SANDY LOAM, 9 TO 15 PERCENT SLOPES, ERODED**

Fault Hazard Zones (200 Ft buffer): **N/A**

Liquefaction Potential: **N/A**

Expansive Soils: **HIGH**

Erosion Potential: **HIGH**

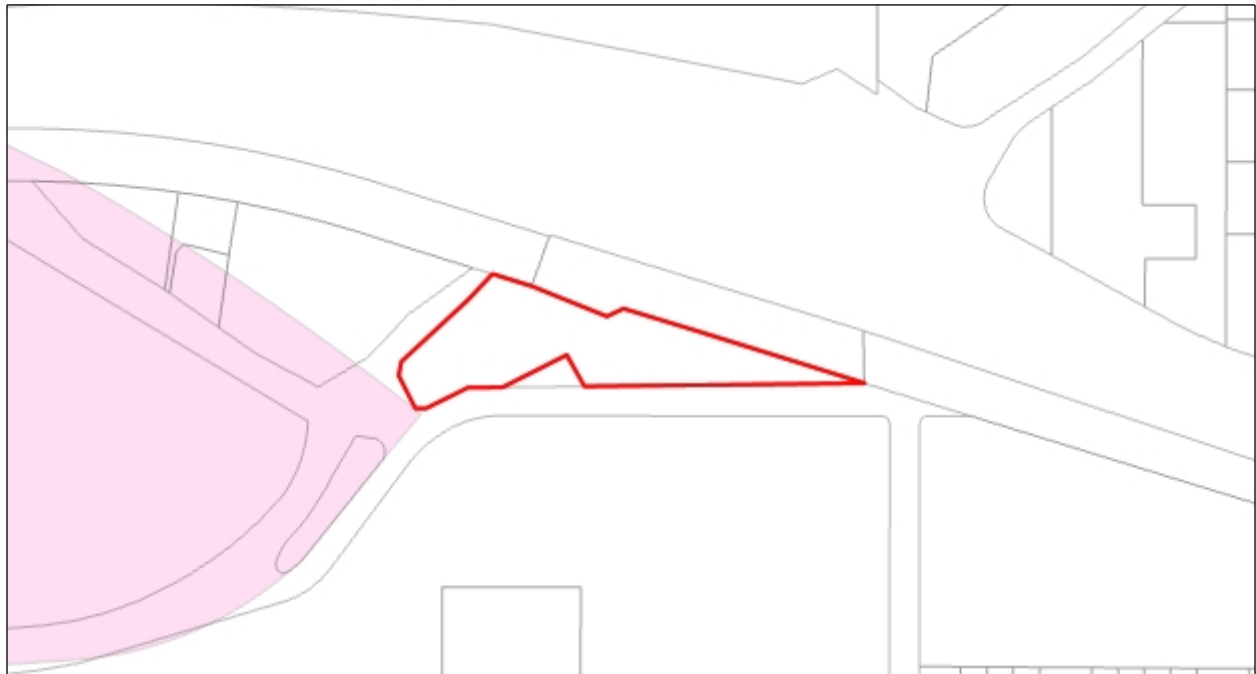
Shallow Groundwater: **POTENTIALLY SHALLOW,
MODERATELY SHALLOW**



Vicinity Map



Visual: Visual Unique





Visual: Visual Hillside



Visual: Visual Shoreline





Biological: Airport Habitats



Biological: Airport Restoration Areas





Biological: Coastal Zone Resources



Biological: Creek And Wetland Habitats

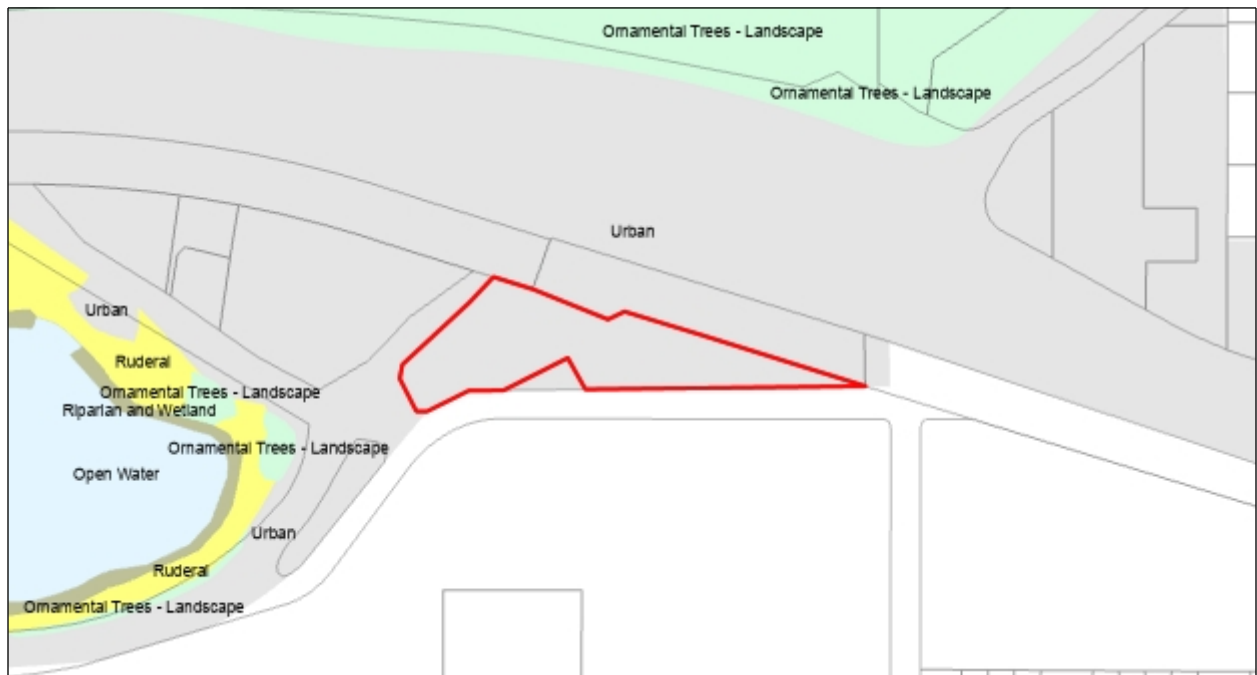




Biological: Special Wildlife Areas



Biological: Upland Habitats





Biological: Key Riparian Bird Habitats



Biological: Sensitive Species

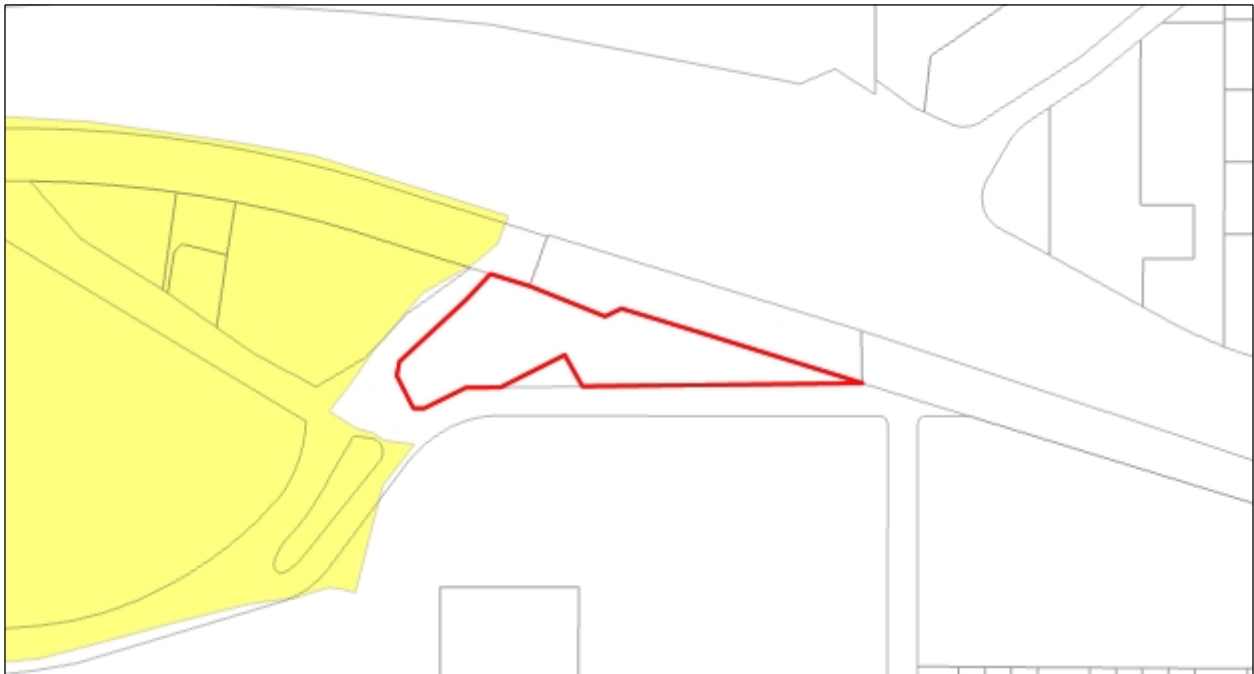




Environmental Hazards: High Fire Hazard



Environmental Hazards: Tsunami CGS 2021

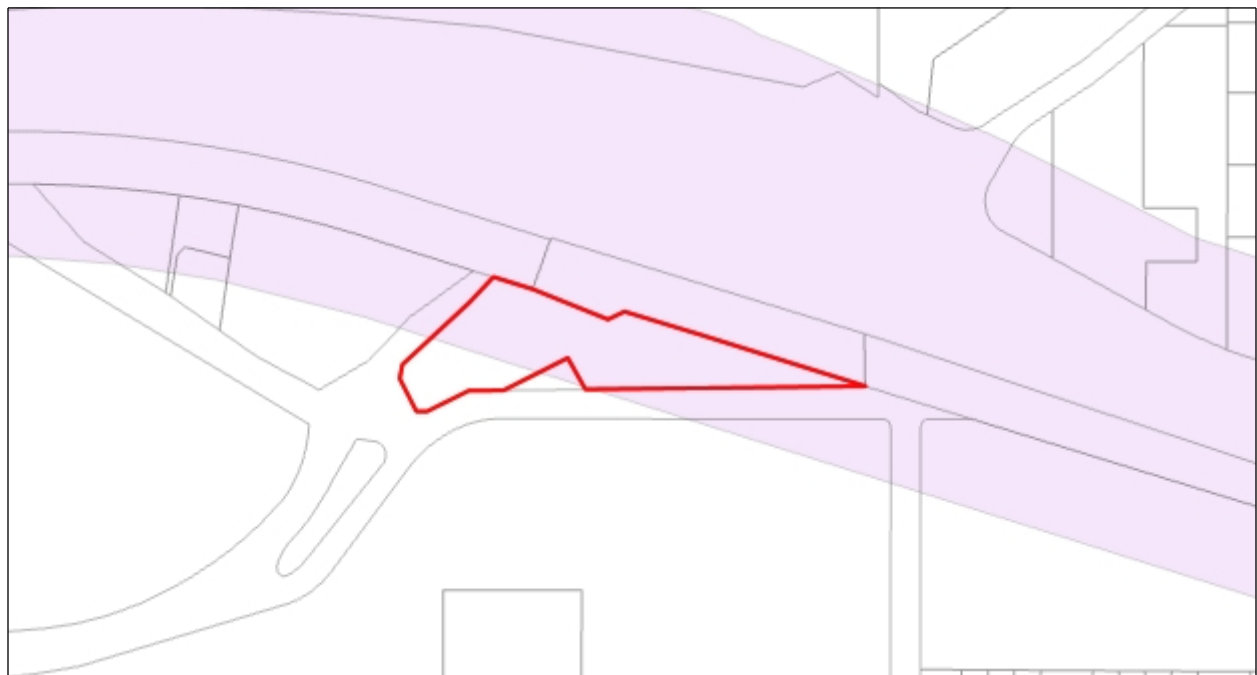




Environmental Hazards: Flood Zones 2023



Environmental Hazards: 250' Freeway Setback

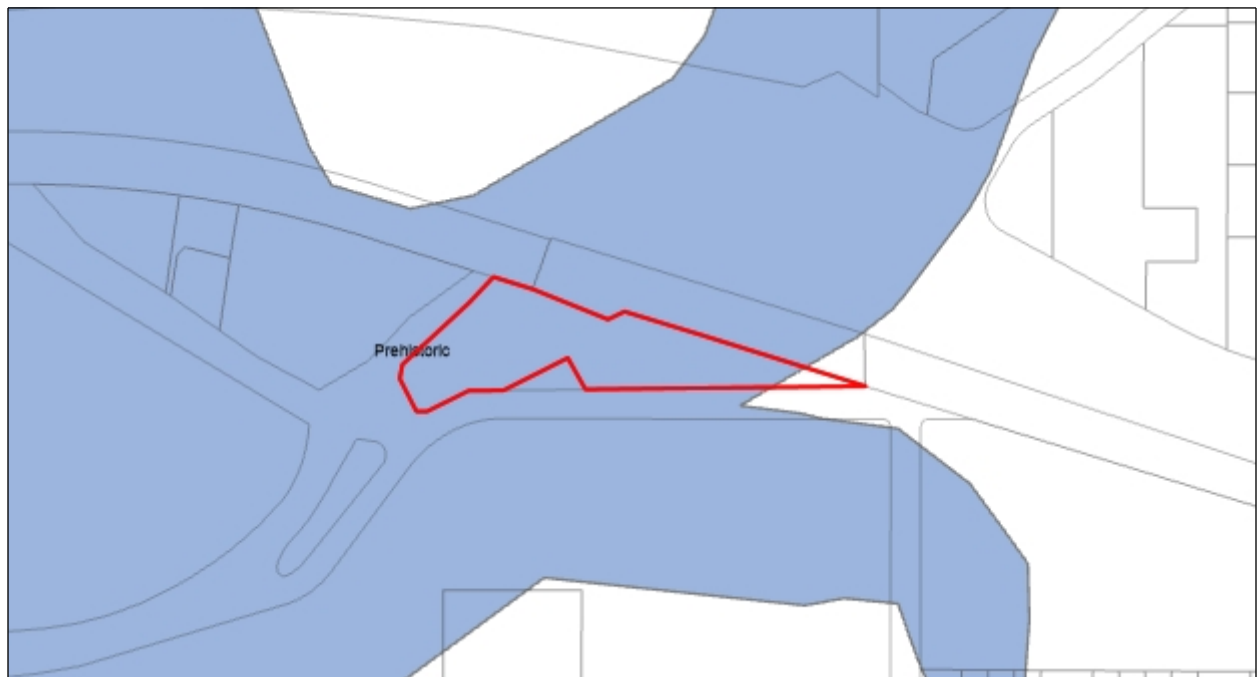




Environmental Hazards: Shoreline Hazards



Archaeological: Prehistoric Resources Period





Area of Potential Contaminated Fill



Buffer 50ft CalGEM Oil Well ID





Archaeological: Archaeological: Mission Complex & Waterworks (1786-1835)



Archaeological: Spanish Colonial & Mexican (1782-1849)





Archaeological: Early American Transition Period (1850-1870)

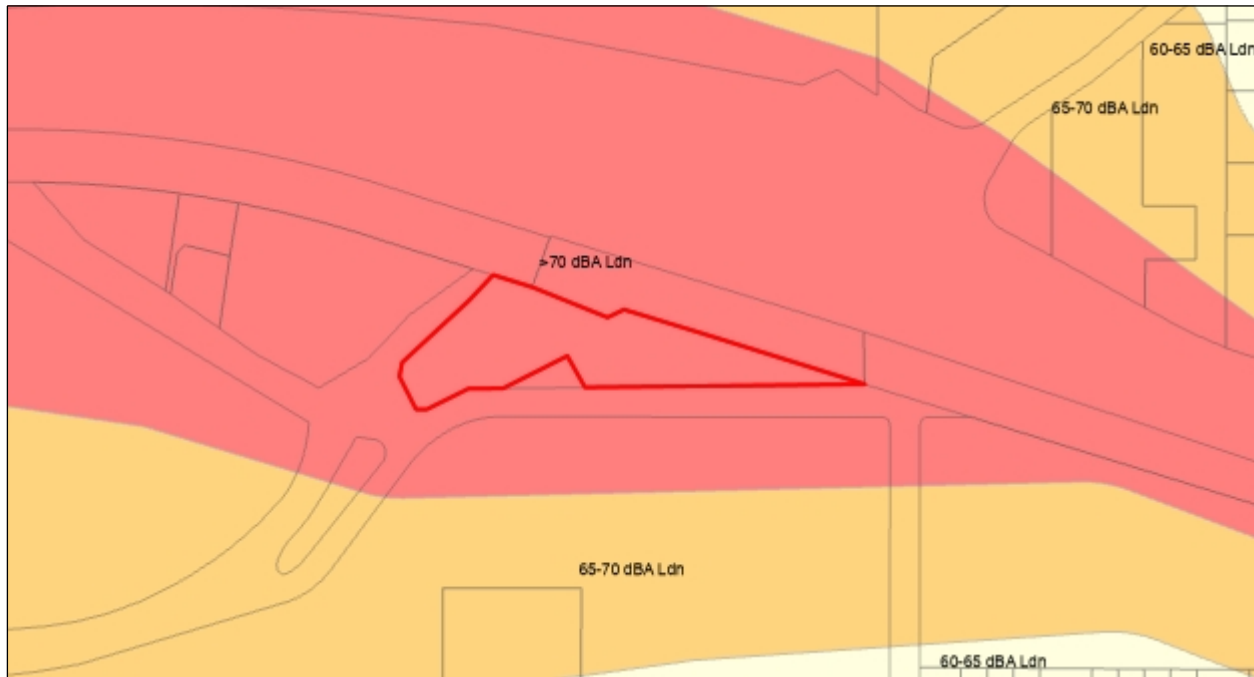


Archaeological: American Period (1870-1900)

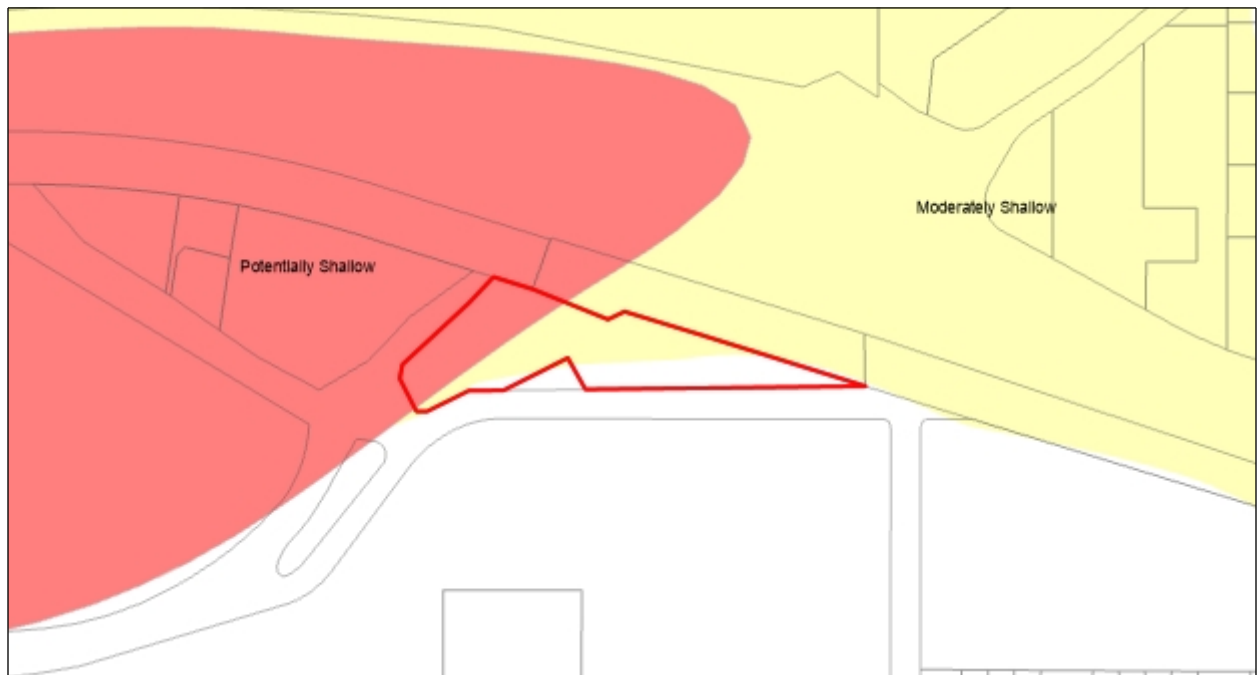




Noise



Geological: Shallow Groundwater Potential





Geological: Geologic Units



Geological: Radon Potential





Geological: Landslide Potential



Geological: Slope Failures [USGS (2006), Urban (2004)]





Geological: Slope Movement Classification



Geological: Soil Types





Geological: Fault Hazard Zones



Geological: Liquefaction Potential





Geological: Expansive Soils



Geological: Erosion Potential





END OF REPORT

