



SUSTAINABILITY & RESILIENCE DEPARTMENT

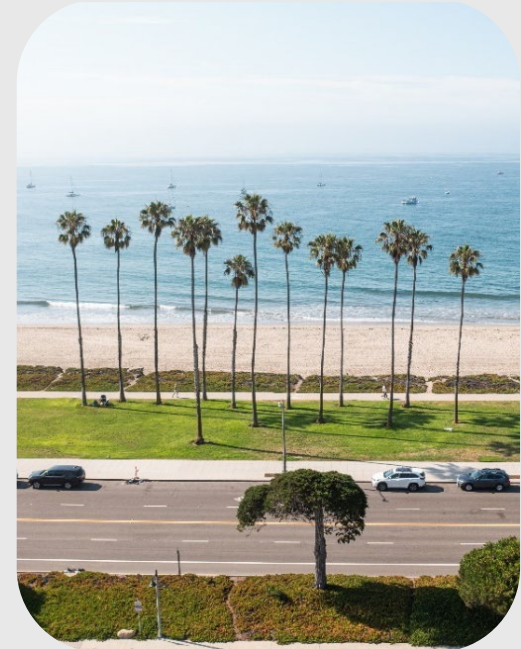
ADAPTATION & RESILIENCE DIVISION

WATERFRONT ADAPTATION PLAN

ABR – May 26, 2026

Today's Presentation Topics

- City's Program to Address Climate Hazards
- Waterfront Coastal Hazards
- Potential Options to Consider Further
- Next Steps
- Discussion



ADAPTATION & RESILIENCE PROGRAM

Program Purpose

Help our community **prepare for current and future** climate-related hazards like sea level rise, flooding, erosion, and wildfires.



Active Major Projects

- Regional Coastal Adaptation Monitoring Program
- Wastewater & Water Systems Climate Adaptation Plan
- Waterfront Adaptation Plan
- Laguna Flood Resilience Study
- Airport Climate Adaptation Plan



CALIFORNIA
COASTAL
COMMISSION



Coastal
Conservancy

WATERFRONT ADAPTATION PLAN



Waterfront Adaptation Plan Vision

Develop practical solutions to address coastal flooding and erosion for the next 30 years, **while enhancing beach access, recreation, boating, and habitat.**

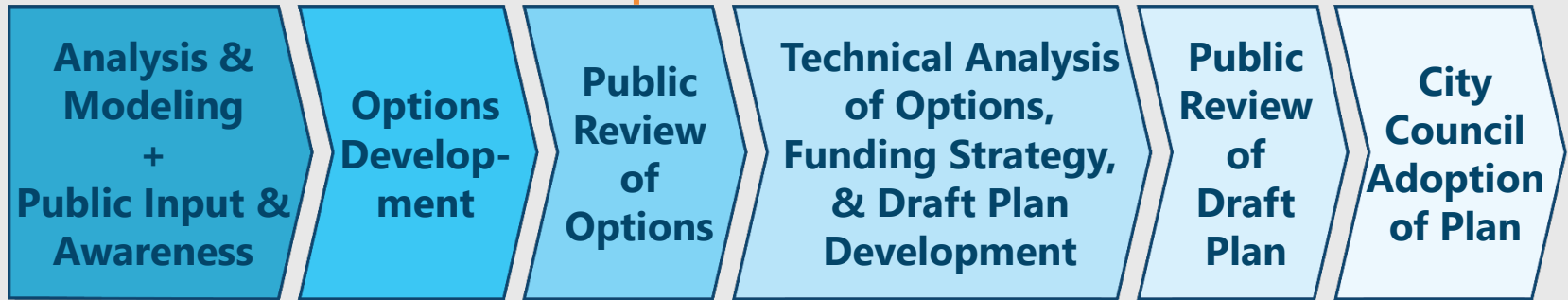
Project Schedule

2024

2025

2026

2027



Today



Project Area



CHALLENGES TODAY & IN THE FUTURE

Beach erosion, flooding, and sea level rise

Today's Damages from the Ocean

Erosion from waves



Flooding from ocean



Storms today are causing damages and disruption: \$3M for 2023 storm alone

Today's Erosion at East Beach

Over the last
20 years, East
beach
**eroded
significantly**
(5 ft/yr in
some areas)

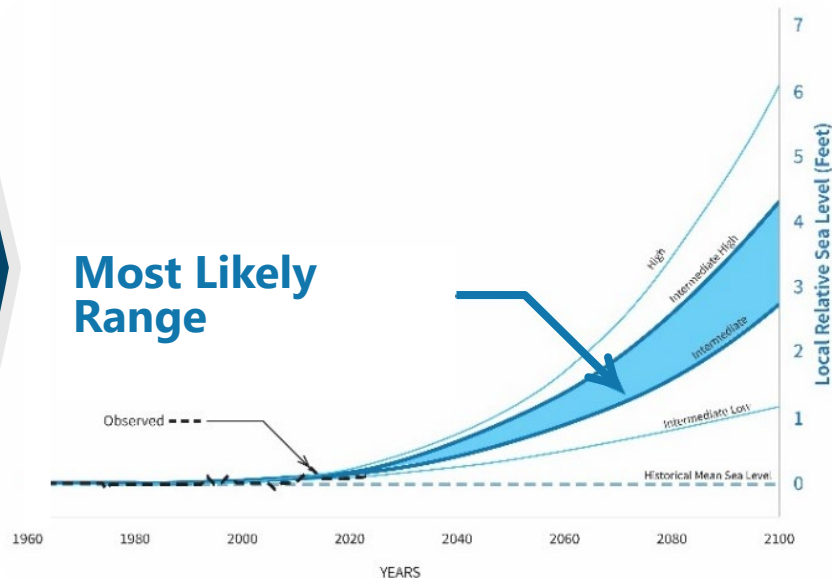
November 2025



Increased
erosion causes
**more inland
flooding risk**

Sea Level Rise & Tomorrow's Shoreline

- Today, El Niño and big waves are biggest threat
- Sea level rise will increase storm damage and erosion
 - 3-4" of sea level rise since 2000
 - Will accelerate in coming years



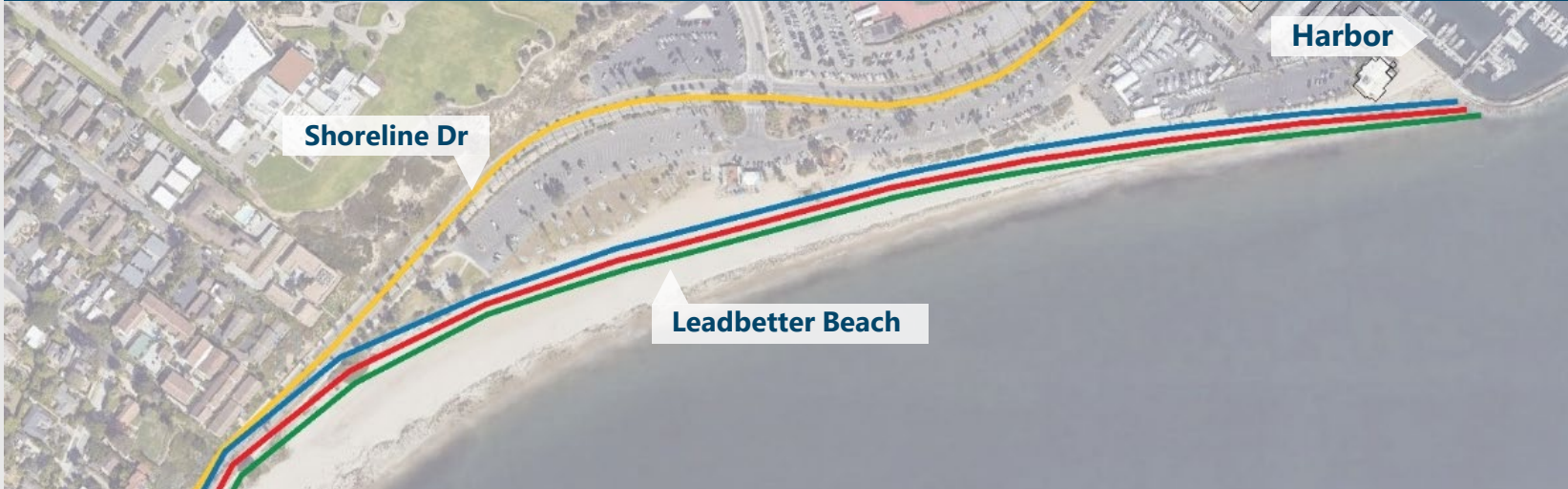
Tomorrow's Bluff Areas



Access to beaches with bluffs will become limited,
making **Waterfront beaches even more important**

Tomorrow's Leadbetter Beach (no action)

Leadbetter Beach narrows



0.8' SLR ~2050

1.6' SLR ~2065

2.5' SLR ~2075

Waterfront "Hold the Line" Position

Tomorrow's West Beach (no action)

West Beach remains wide



0.8' SLR ~2050

1.6' SLR ~2065

2.5' SLR ~2075

Waterfront "Hold the Line" Position

Tomorrow's East Beach (no action)

East Beach narrows fast



0.8' SLR ~2050

1.6' SLR ~2065

2.5' SLR ~2075

Waterfront "Hold the Line" Position

We Need a Backstop for Ocean Flooding



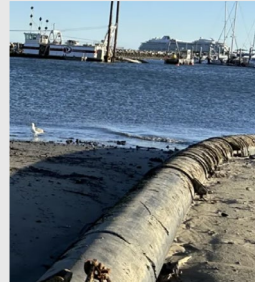
THE TOOLBOX OF POTENTIAL SOLUTIONS & OPPORTUNITIES

It's not all doom and gloom; there's a toolbox

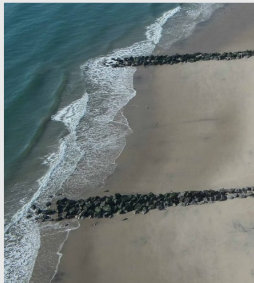
The Toolbox of Potential Solutions



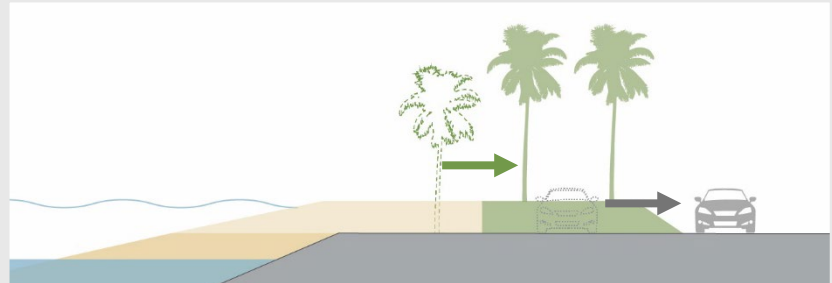
Sea Walls & Revetments



Beach Nourishment, Sand Berms, & Dunes



Groins, Headlands, & Artificial Reefs



Relocation or Removal of Development

Opportunities to Improve the Experience



Add walking & biking paths



Reimagine West Beach



Improve views & entries



Add facilities



Enhance economic vitality



Expand recreation

Opportunity for Multi-benefit Solutions

Opportunity:
**New separated
walk & bike path**



Opportunity:
**Address
hazard risk**



Multi-benefit Solution:
**Elevated & separated
walk & bike path**



PUTTING THE PIECES TOGETHER

Preliminary List of Options for Further Evaluation

Waterfront-Wide Goals & Priorities

Save the sandy beach and enhance recreation

Protect the working harbor

Protect inland areas from ocean flooding

Provide continuous walk, roll, and bike paths



Project Categories

30-Year Plan Timeline

Quick Wins
(\$)

Core Measures
(\$\$\$)

Future Options
(\$\$\$\$\$)



LEAD BETTER BEACH OPTIONS

A sandy beach &
recreation
destination





Leadbetter Potential Quick Wins:

Immediate safety & flooding fixes



1 Restripe first row of parking to a walking & biking path



2 Deployable flood proofing



3 Low wall next to new path



4 Convert unused area to parking

Leadbetter Potential Core Measures:

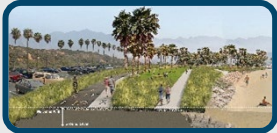
Keep sandy beach by moving things back

1



Move parks, paths, & assets inland to keep sandy beach

2



Raise path to limit flooding

3



Relocate when replacement facilities available or flood & erosion risk reach set limits



4



Relocate parking to new parking garages at existing surface lot

5



Improve stormwater drainage

HARBOR OPTIONS

A commercial
fishing,
recreation, &
public access
destination



Harbor Potential Quick Wins:

Immediate safety & flooding fixes



1 Deployable flood proofing



2 Drainage improvements



3 Restripe first row of parking to a walking & biking path

Harbor Potential Core Measures:

Flood protection, prioritize public access & boating



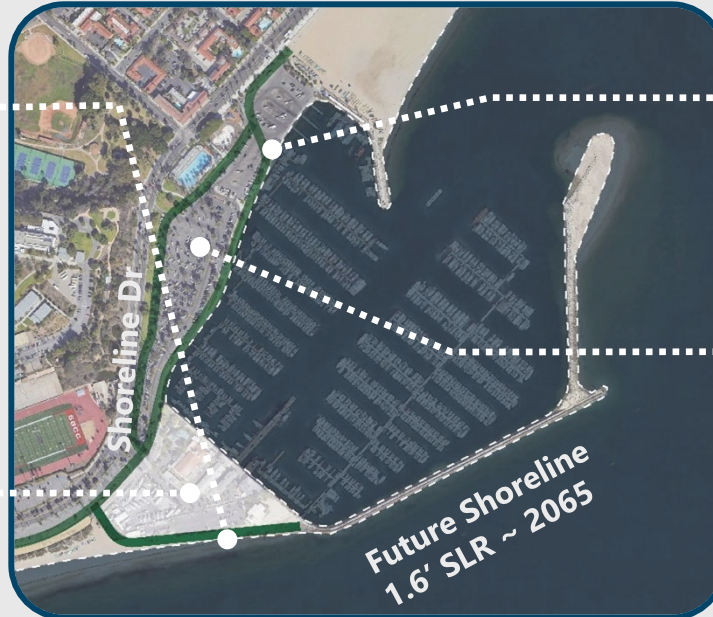
1

Pedestrian promenade on raised revetment for flood protection & better access



2

Protect & improve Harbor Commercial area for better public access & boating



3

Enhance & raise paths for better access & flood protection



4

Explore converting some parking for economic development

WEST BEACH OPTIONS

A premier
sandy beach
destination



West Beach Potential Core Measures:

Premier sandy beach experience



1 Relocate storm drain to improve sand quality



2 Add restrooms, showers, café, beach concessions



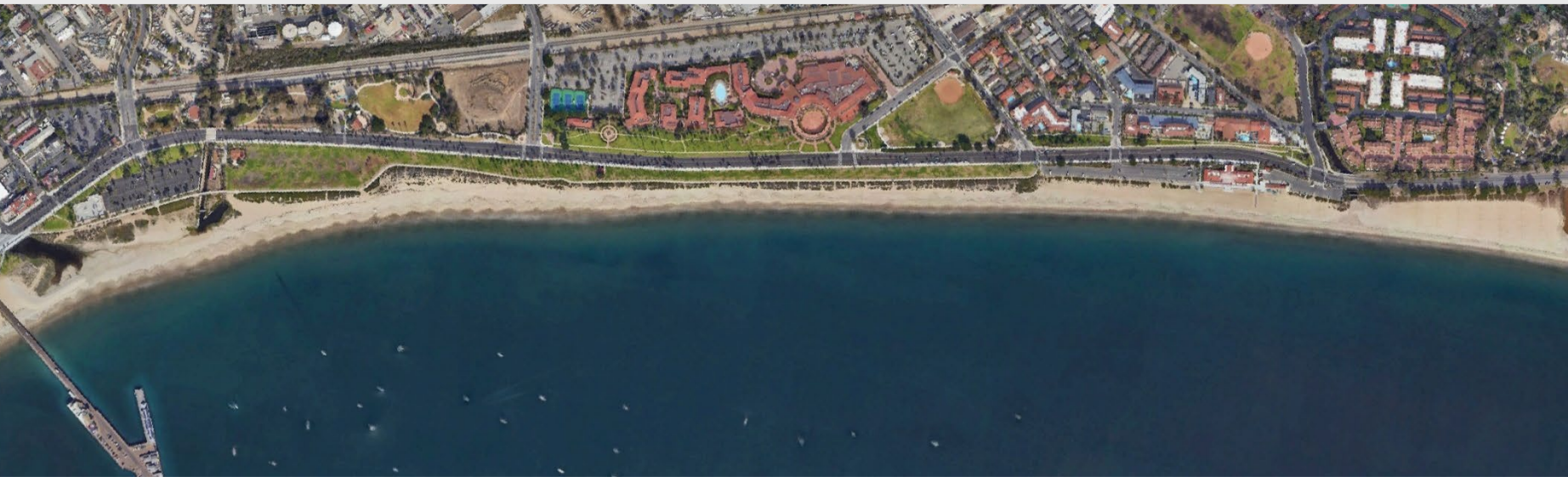
3 Raise walking & biking path with new park



4 Retain space for small boats, outriggers, & tomols

EAST BEACH OPTIONS

A sandy beach & recreation destination



East Beach Potential Core Measures:

Preserve as much sandy beach as possible & protect critical infrastructure



1

Keep sandy beach and park for as long as possible by moving parks, paths, & facilities inland



2

Raise & locate walking & biking path to protect Cabrillo Pavilion & inland areas



Future Shoreline 1.6' ~ 2065

NEXT STEPS

Next Milestone Steps



Get Involved & Learn More

Visit the Website for Email List & More Info

- SantaBarbaraCA.gov/WaterfrontAdaptation

Contact & Submit Comments

- Timmy Bolton, Senior Climate Adaptation Analyst
(805) 730-0836 or TBolton@SantaBarbaraCA.gov

Discussion Questions

1. Options headed in the right direction?
2. Additional options that should be evaluated?
3. Any missing objectives or priorities?
4. Key questions you want answered in detailed follow-on analysis?
5. Any initial thoughts on proposed phasing?