

Scheme A: Coastal Cottage



Lap siding in soft pastels and white trim with weathered grey roofing

Option 1: Basic Entry



Option 2: Covered Deck

Scheme B: Arts & Crafts



Stucco siding in earth tones complemented by natural color hues and wood accents

Option 1: Basic Entry



Option 2: Covered Deck

Scheme C: Contemporary



Wood-look vertical siding and dark window frames and metals

Option 1: Basic Entry



Option 2: Covered Deck

Scheme D: Farmhouse

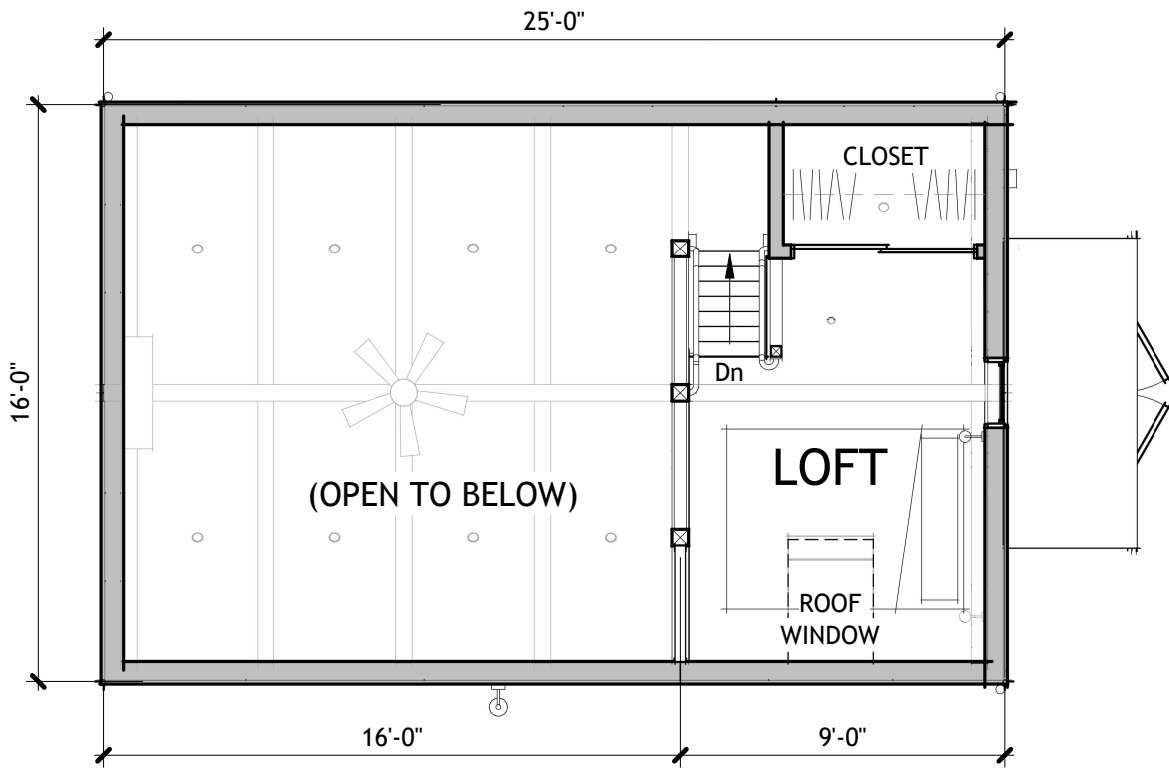


Rustic board and batten siding and trim in deep shades

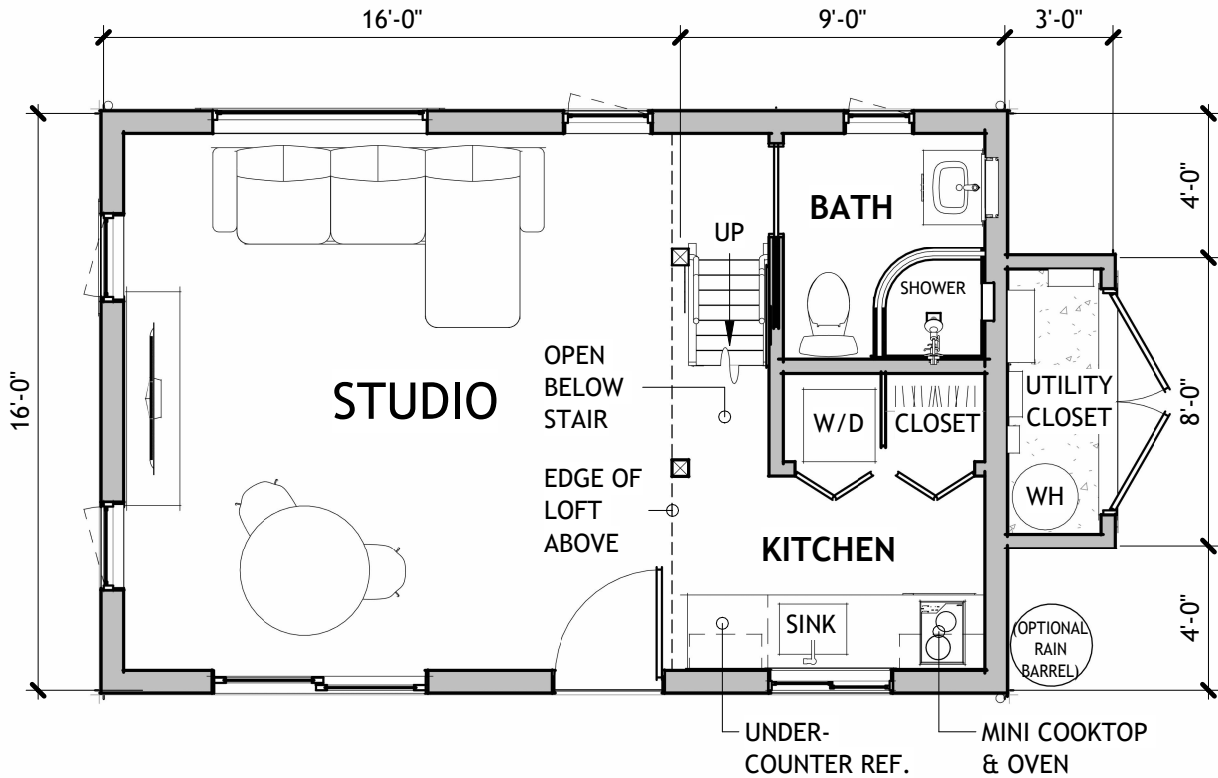
Option 1: Basic Entry



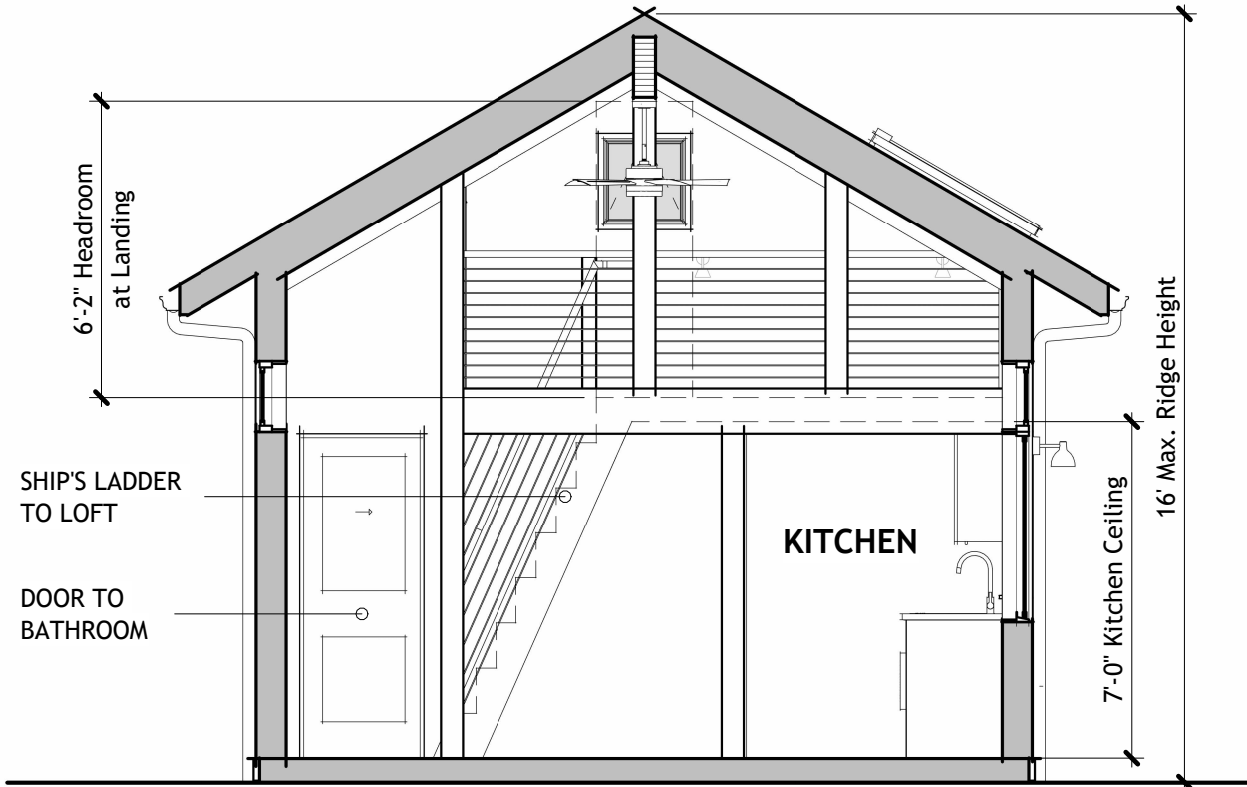
Option 2: Covered Deck



LOFT & CEILING PLAN
3/16" = 1'-0"



FLOOR PLAN WITH MINI KITCHEN & OPTIONAL UTILITY CLOSET
3/16" = 1'-0"

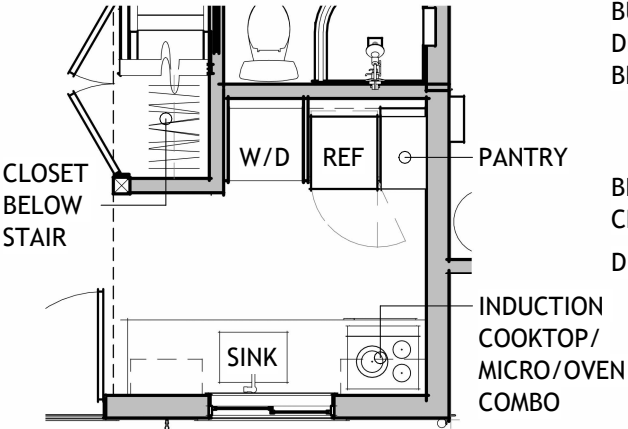


SECTION - LOOKING TOWARD LOFT
1/4" = 1'-0"

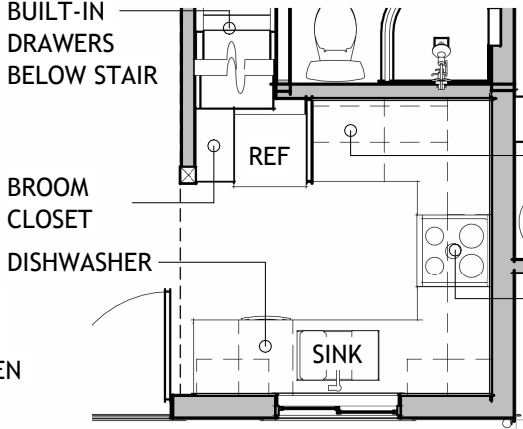
GABLE 400+

- Exterior dimensions: 16'x25' (400 SF footprint)
- Interior floor area: 356 SF plus 49 SF loft
- Roof Height: 16' at the ridge
- Structural design for a standard slab-on-grade foundation and wood framing is complete. The foundation design can be adapted to suit specific site conditions
- The building can be mirrored and rotated in any direction, accommodating various site configurations.
- Exteriors are designed to comply with high fire construction standards in accordance with CRC 337 Materials and Construction Methods for Exterior Wildfire Exposure
- The home is fully electric; solar panels and battery storage are optional. With optimum solar exposure, installation of a 2.2 kW solar panel system, and a 10kWh battery, the home can achieve net zero energy compliance under the California Energy Code.
- Interior finishes, fixtures, and appliances may be customized to suit your preferences.

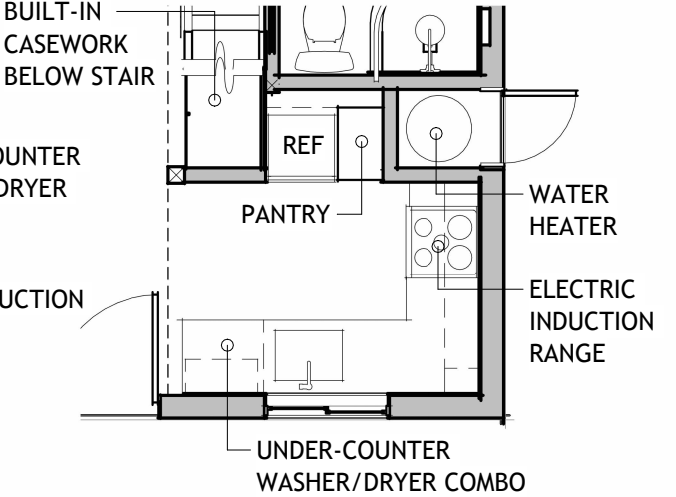
Use of the plans requires a contract with BESHDA.
Visit www.beshda.com/gable400 for more information.



GALLEY KITCHEN (OPTION)
3/16" = 1'-0"



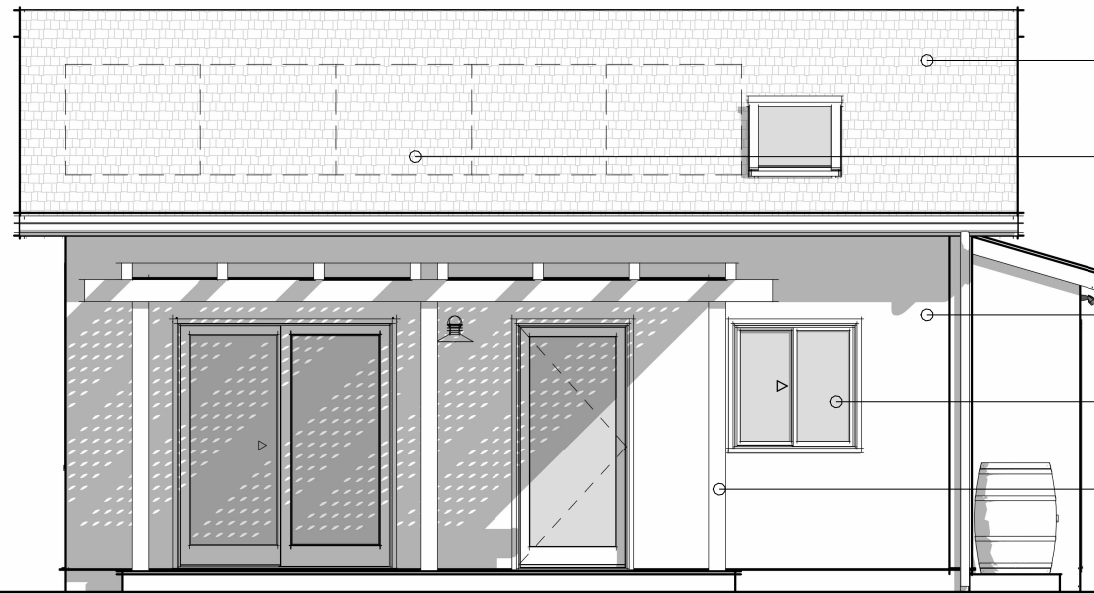
FULL KITCHEN (OPTION)
3/16" = 1'-0"



L-KITCHEN W/ INTERIOR WATER HEATER
3/16" = 1'-0"

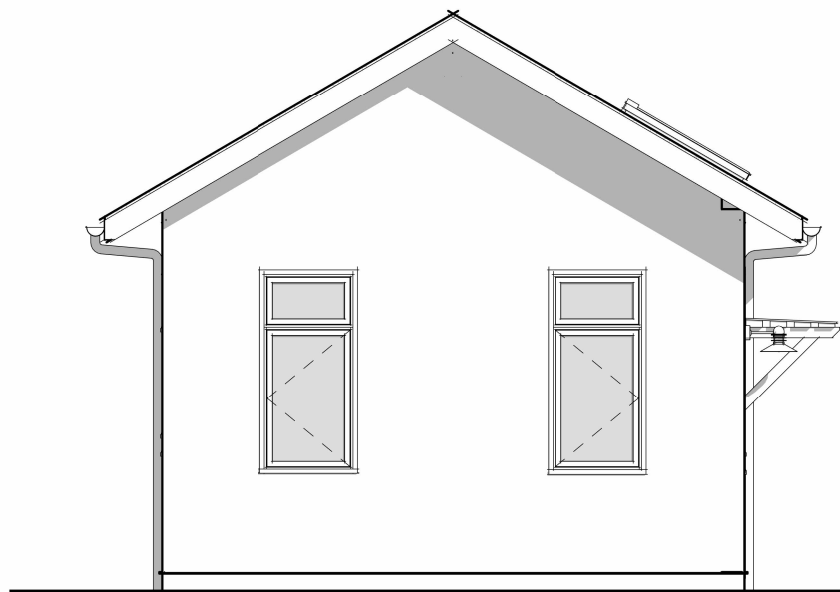


FRONT ELEVATION (BASIC ENTRY)
3/16" = 1'-0"

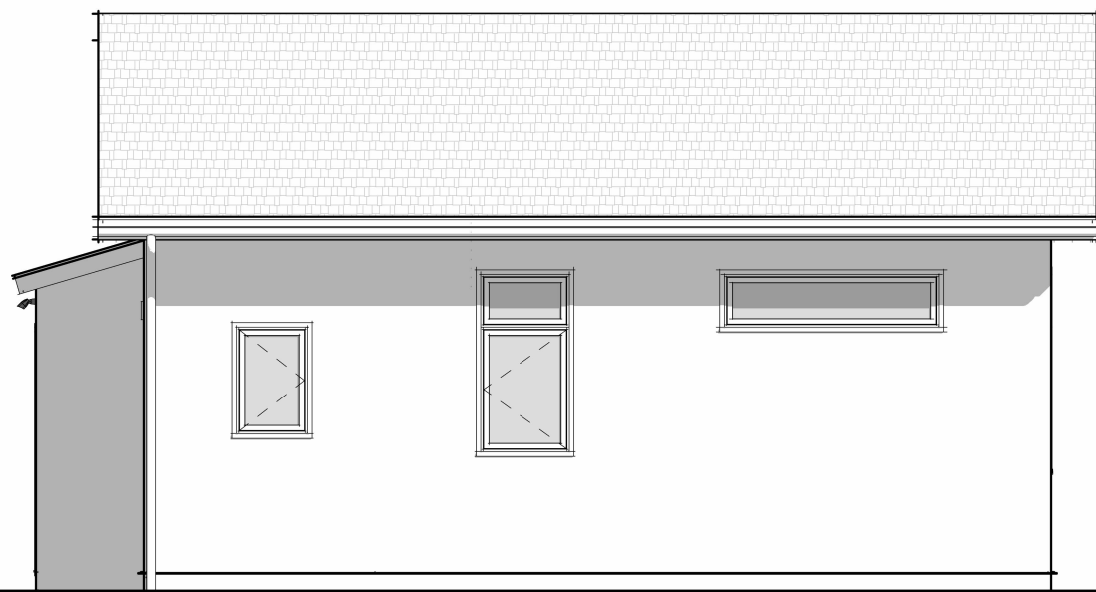


FRONT ELEVATION (WITH COVERED DECK)
3/16" = 1'-0"

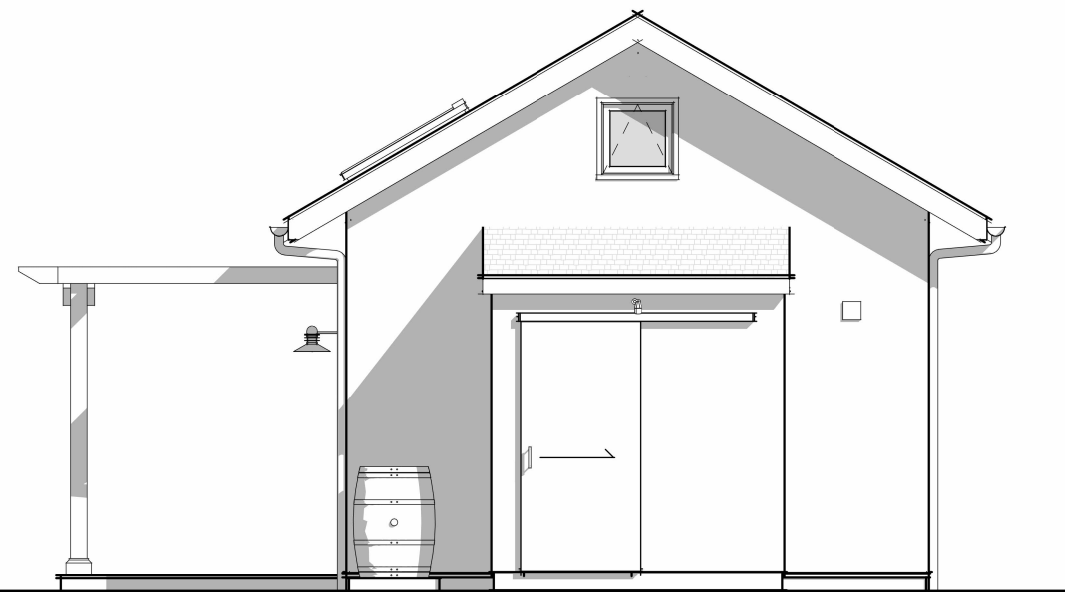
- Composition Shingle or Standing Seam Metal Roofing
- Optional Solar Panels
- Four Siding Options (stucco shown)
- Fiberglass or Aluminum Clad Wood Doors & Windows
- Optional pergola or awning



LEFT ELEVATION
3/16" = 1'-0"



BACK ELEVATION
3/16" = 1'-0"



RIGHT ELEVATION (OPTIONAL UTILITY CLOSET)
3/16" = 1'-0"



Bonnie E. Sangster-Holland Design & Architecture
PO Box 40419, Santa Barbara, CA 93140
805.563.3509 | bonnie@beshda.com

GABLE 400+
© 2025 BESHDA. All rights reserved.

PREAPPROVED ADU
Santa Barbara, CA

ELEVATIONS
April 2025

04
of 4