

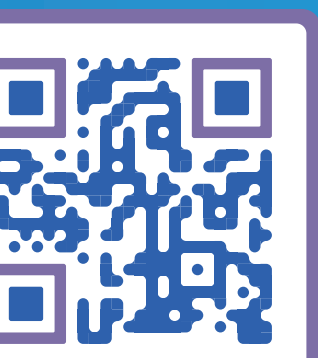
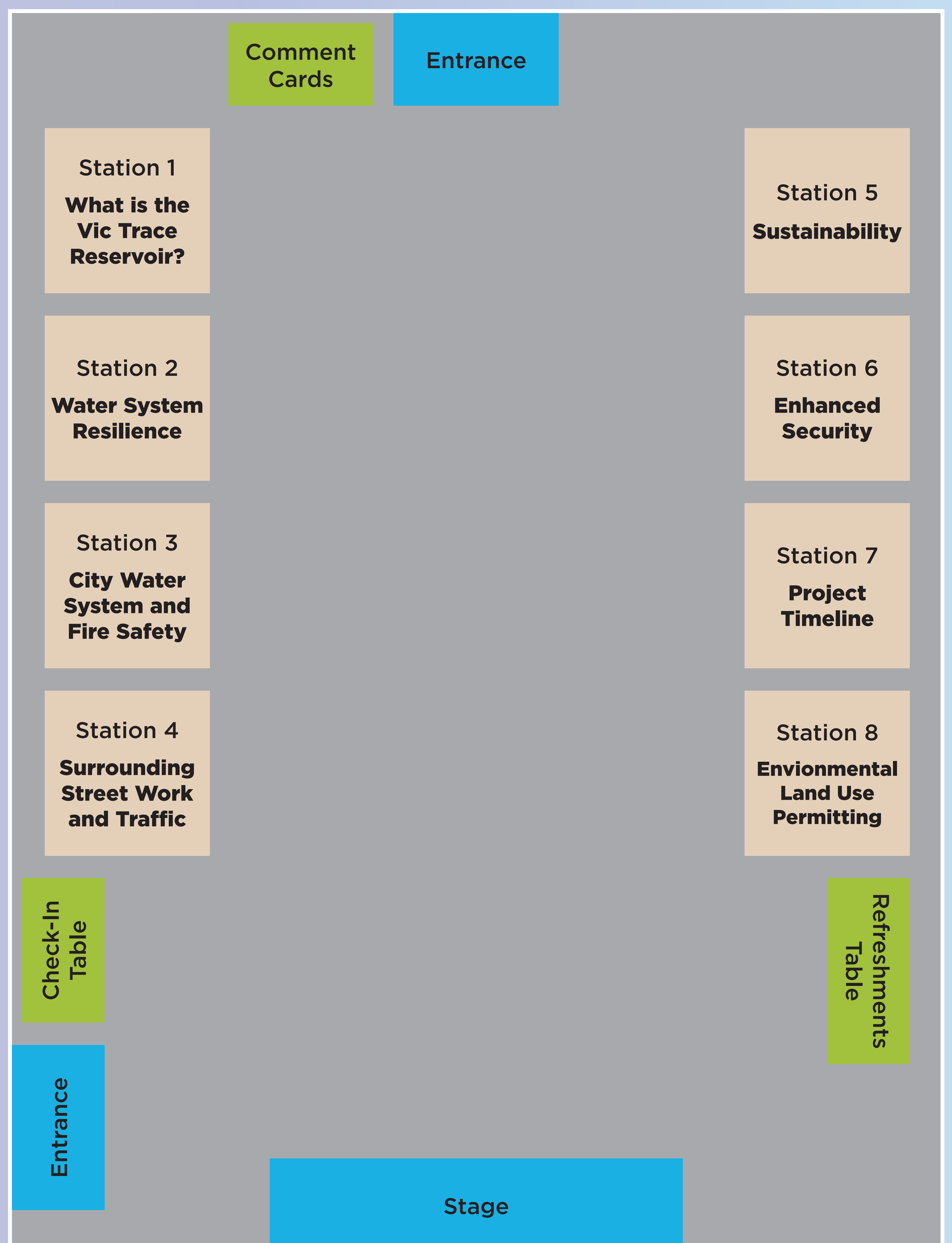
Welcome

Vic Trace Reservoir Replacement Project: Community Engagement Workshop

Room and Posterboard Layout

WORKSHOP TIMELINE

- 5:30 P.M. Welcome
- 5:40 P.M. Presentation
- 6:00 P.M. Open House
- 7:00 P.M. Open House Concludes
- Please pick up a comment card or submit your feedback online.



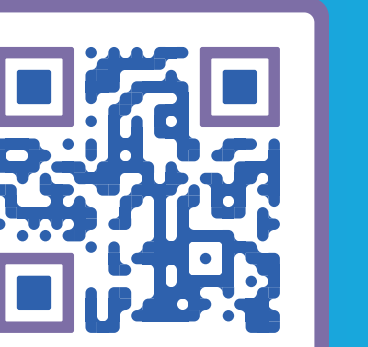
What is the Vic Trace Reservoir?

HISTORY

- Constructed in 1956
- Named after Victor Trace (1872-1937) a City Water Manager
- Located at the northeast corner of Dolores Drive and La Coronilla Drive in the Alta Mesa neighborhood

RESERVOIR FACTS

- Stores 10 million gallons of treated drinking water
- Receives water directly from Cater Water Treatment Plant via gravity flow
- Serves nearly 60,000 people or ~70% of City's population



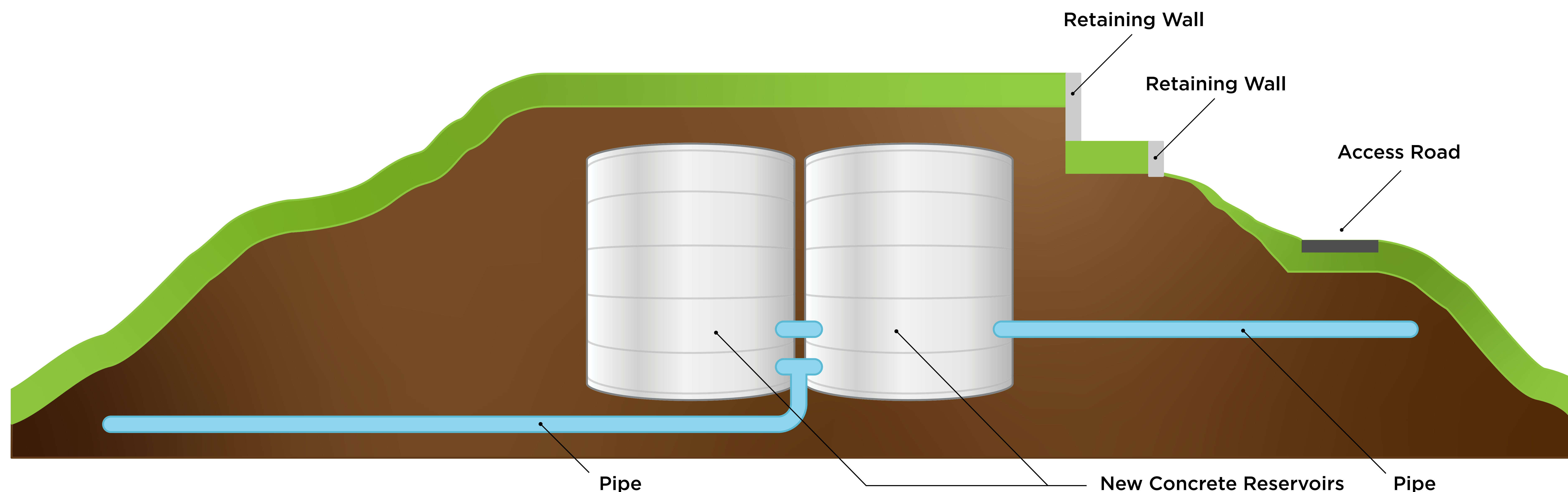
WHAT IS THE PROJECT?

Replace existing 10-million-gallon tank with two new 5-million-gallon buried tanks.

WHY TWO TANKS?

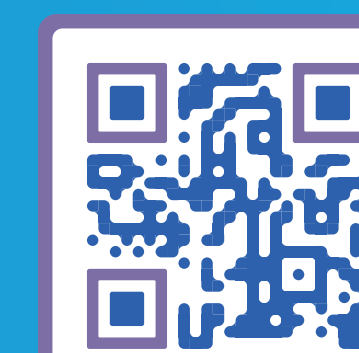
Two-tank design allows one tank to be taken offline for repairs and maintenance, while the other stays in service. Two new tanks are also expected to improve water quality.

NEW BURIED RESERVOIR DESIGN



New reservoirs are expected to last 100-200 years.

New reservoirs will meet current seismic standards.

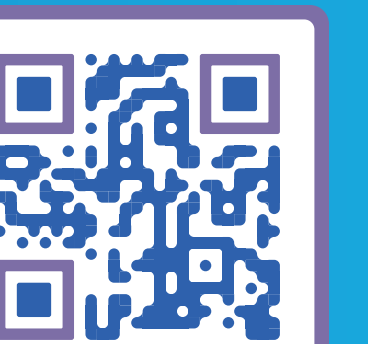
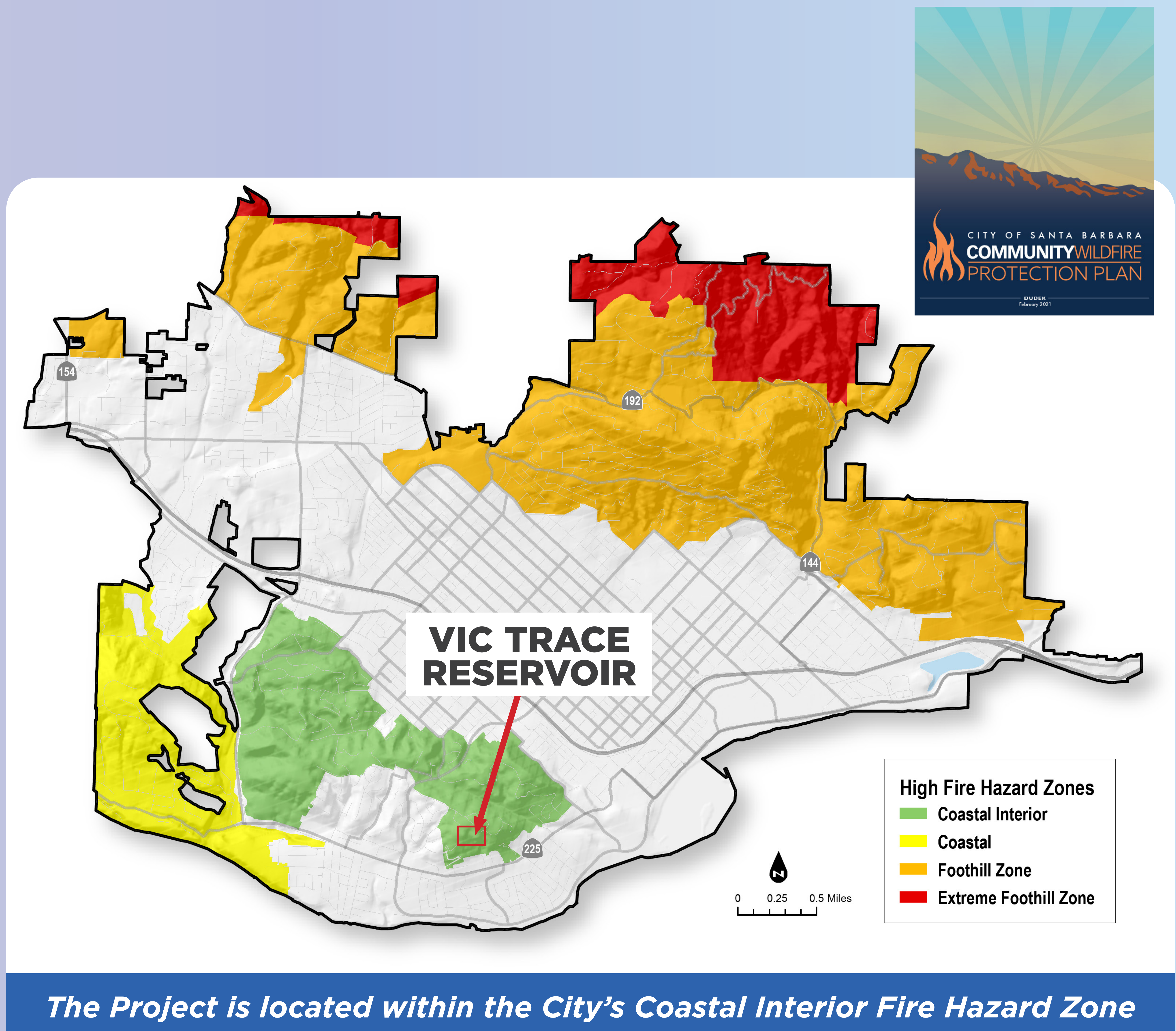


The water system is built to support firefighting efforts for multiple structure fires within a neighborhood.

City Water and Fire worked together to improve the site's fire personnel access and fire-fighting capabilities, and designed fire-resistant landscaping.

Previous analysis confirmed the City can provide water to customers while the Vic Trace Reservoir is demolished and rebuilt.

The City is currently evaluating how to optimize water operations for emergencies moving forward.

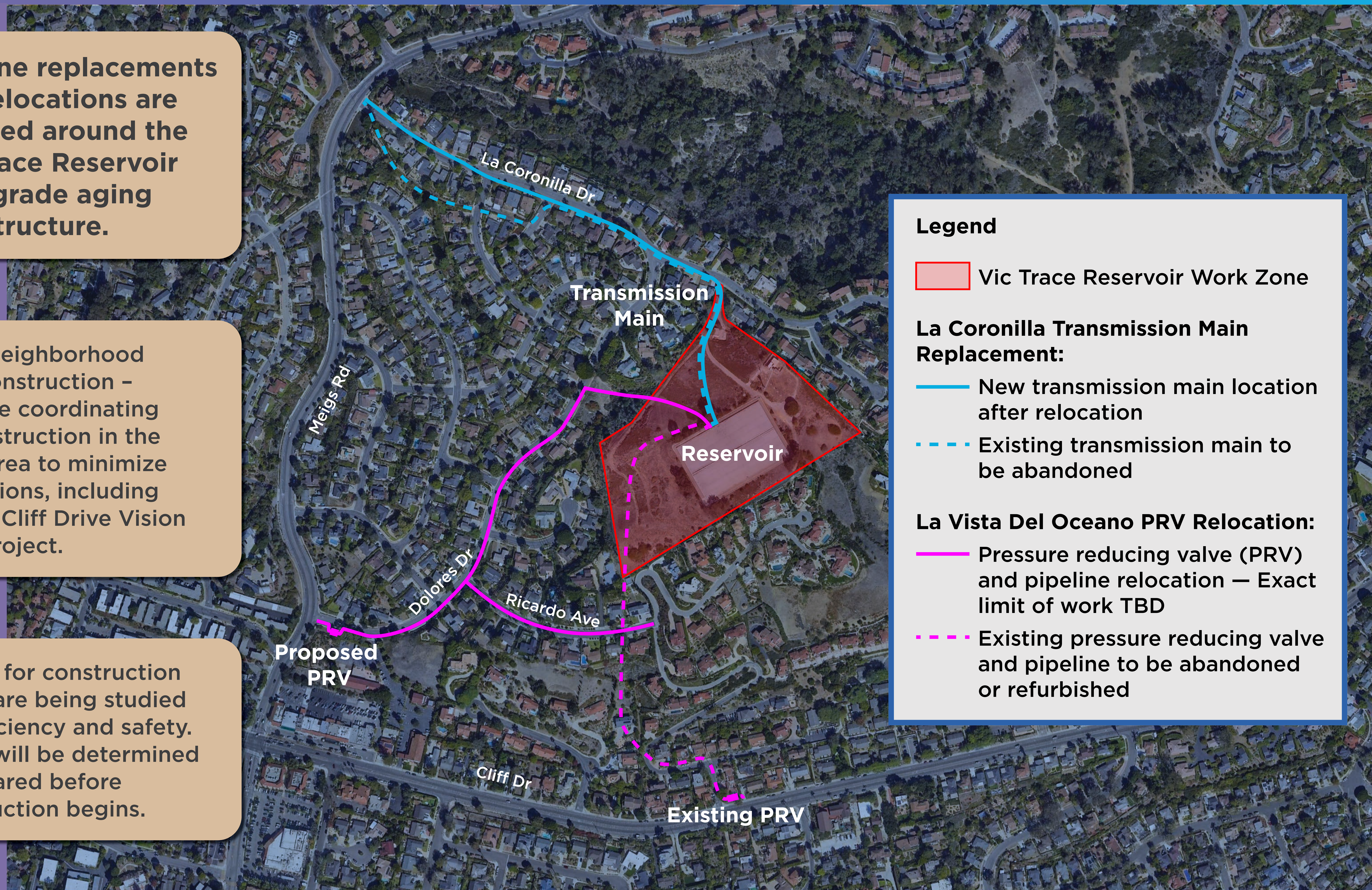


Surrounding Street Work and Traffic

Pipeline replacements and relocations are required around the Vic Trace Reservoir to upgrade aging infrastructure.

Mesa Neighborhood City Construction – staff are coordinating all construction in the Mesa area to minimize disruptions, including for the Cliff Drive Vision Zero Project.



Routes for construction traffic are being studied for efficiency and safety. These will be determined and shared before construction begins.





Legend

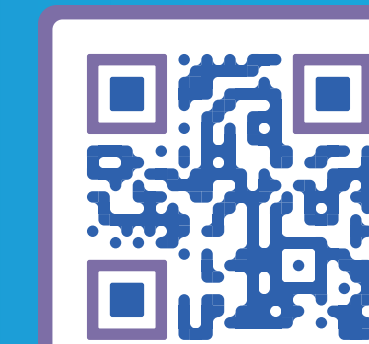
 Vic Trace Reservoir Work Zone

La Coronilla Transmission Main Replacement:

-  New transmission main location after relocation
-  Existing transmission main to be abandoned

La Vista Del Oceano PRV Relocation:

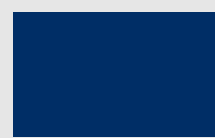


-  Pressure reducing valve (PRV) and pipeline relocation — Exact limit of work TBD
-  Existing pressure reducing valve and pipeline to be abandoned or refurbished

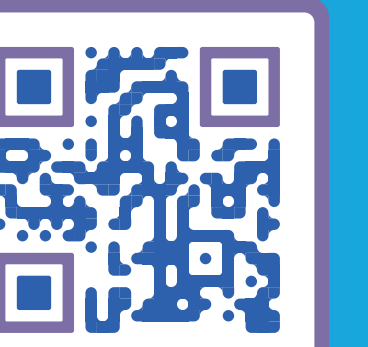


City Water and Sustainability & Resilience are partnering to meet Project sustainability goals:

- Replanting of native, drought-tolerant landscaping
- Stormwater capture
- City is exploring the potential opportunity for onsite renewable energy infrastructure

Legend

-  Potential Solar panels and associated infrastructure
-  Water operations use
-  Access route for Fire Department and Water Operations Staff

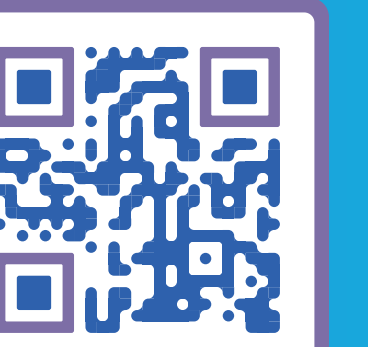


Enhanced Security

- The site houses vital infrastructure for both Water and Public Safety Communications, including the Fire Radio System.
- New fencing, gates and cameras will improve site security to protect critical water and communications infrastructure.
- The Project will bring the site up to Federally- mandated protection and security standards.

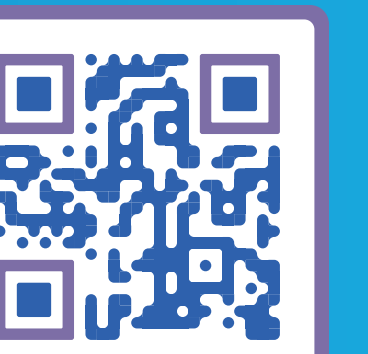


**POST-PROJECT RENDERING VIEW FROM ENTRANCE
DRIVEWAY ON LA CORONILLA**



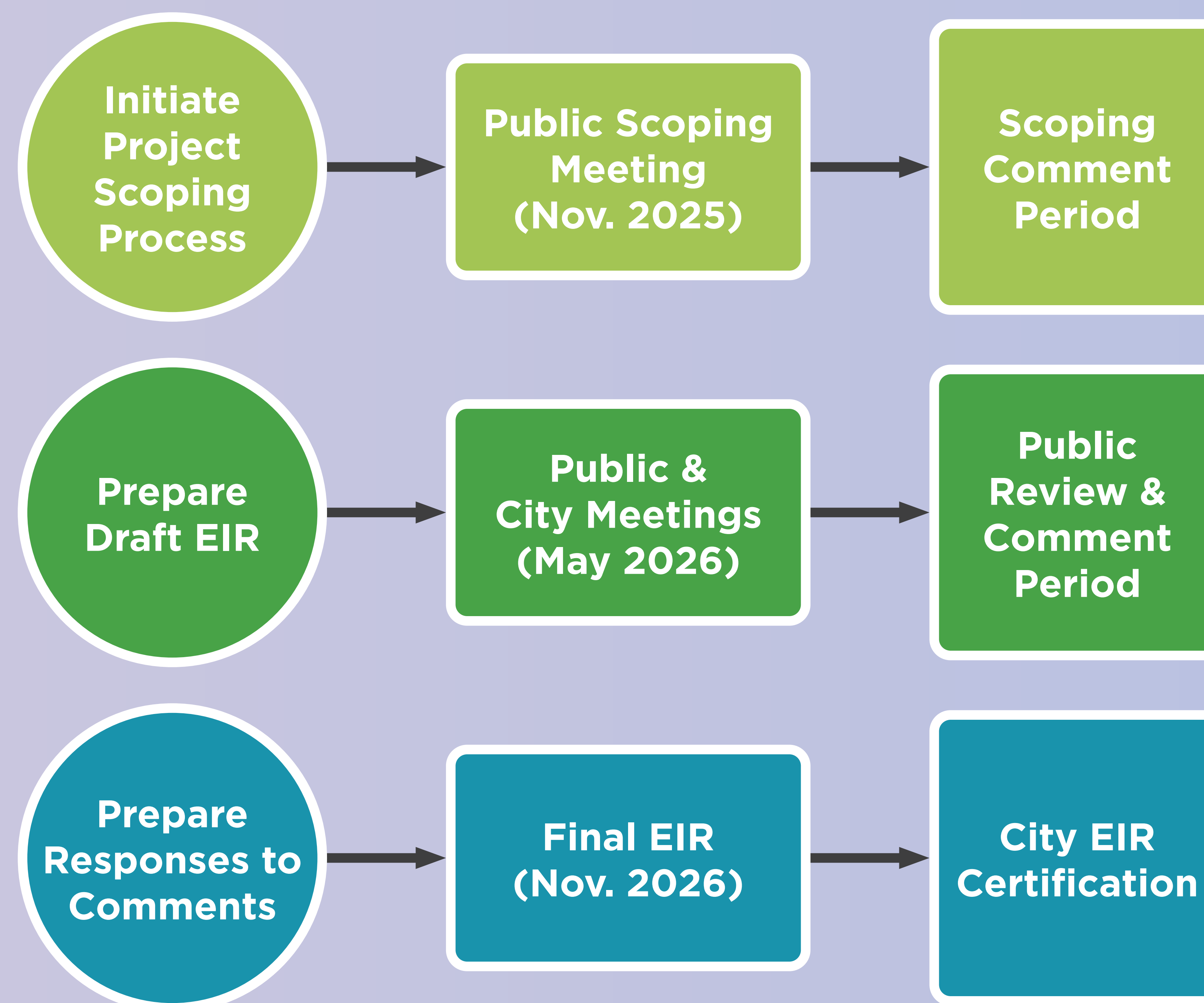


Please note, these timelines are subject to change.



This Project requires environmental and land use planning approvals.

California Environmental Quality Act (CEQA) Environmental Impact Report (EIR) Process



Key Environmental Resource Study Areas:

- Aesthetics
- Air Quality
- Biological Resources
- Cultural Resources
- Geology and Soils
- Greenhouse Gas Emissions
- Hazards
- Noise
- Recreation
- Transportation

The City will be processing the Project's Planning Application in tandem with environmental review. The Project will be presented to the City's Community Development Department, Water Commission, Planning Commission and Architectural Board of Review.

