

I. 1983 - 1984 Grand Jury Report

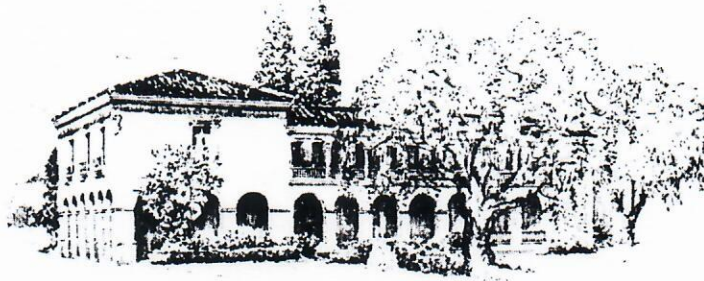
A. Grand Jury (GJ) Recommendation (page 135 of Final Report of Grand Jury) and City's Response (page 5 of Sept. 11, 1984 Report to City Council)

1. **GJ:** "A new slip assignment policy be adopted to correct present abuses. "
An inventory must be maintained of boats by slip assignment, showing actual ownership in order to eliminate "dummy" ownership.
2. **City:** "Revisions to the current policy have been accomplished by staff and the Harbor Commission and are currently with the State Lands Commission for review and comment. This is a major issue in the Harbor and what the Grand Jury or others may consider "abuse" is considered a "right" by some. Since the value of a slip assignment is considerable, the City will proceed with care to insure all opinions are heard before changing existing policy."

9/11/84 #17

CITY OF SANTA BARBARA

City Administrator



P.O. Drawer P-P 93102
Telephone (805) 963-0611

CALIFORNIA

September 13, 1984

The Honorable Ronald C. Stevens
Presiding Judge, Superior Court
County Courthouse
Santa Barbara, California 93102

Dear Judge Stevens:

SUBJECT: 1938-84 Final Report of the Grand Jury
Santa Barbara City Harbor

Enclosed please find our comments on pages 133 through 135 of the 1983-84 Final Report of the Grand Jury pertaining to Santa Barbara City Harbor which is to be filed with your office in accordance with Penal Section 933. As reflected in the attached staff report, these comments, which were concurred with by the Santa Barbara City Council at regular session on September 11, 1984, have been reviewed by the Santa Barbara Harbor Commission.

As further indicated by Penal Section 933, this report has been filed with the Office of City Clerk, City of Santa Barbara.

Sincerely,

Richard D. Thomas
City Administrator

RDT/lg

Enclosure

cc: City Clerk
Steve Amerikaner, City Attorney
Paul Nefstead, Waterfront Director
Larry Parrish, County Administrative Officer

Hinrich Dawson
Waterfront Office

NATURAL RESOURCES COMMITTEE

SANTA BARBARA HARBOR

The Natural Resources Committee was requested to inquire into the conditions and management of the Santa Barbara Harbor. Boat owners and business people had made a number of complaints regarding conditions in the harbor. A study of the 1981-82 Grand Jury report reveals that a number of recommendations have not been addressed by the city administrative offices and harbor personnel.

Procedures

The Natural Resources Committee made several visits to the harbor to walk the docks and marinas and to see firsthand the conditions that had been reported. We also made a visit to the Ventura and Channel Islands harbors to make comparisons.

The committee interviewed members of the Waterfront and Tidelands Association, boat owners, business people, employees of the harbor, Harbormaster Steve Lewis and City Administrator Richard Thomas.

Findings

The Santa Barbara harbor is in a deplorable condition. Many of the marina walkways to the slips are in serious and dangerous condition, with large holes patched up with plywood and improvised metal strapping that comes loose with normal wave action.

Electrical wiring is exposed in a number of places. Outlets are not standardized but are of several different types with pullout plugs instead of the locking type. Between the outlets and boats, many of the power lines are hanging in the water. Several light fixtures on the breakwater walkway have been removed and not replaced.

1. The Grand Jury recommends that a master plan for the harbor be prepared by qualified marina professionals.
2. The Grand Jury recommends that regulations be established for boat owners and live-aboards, and that these regulations be published and distributed to all concerned.
3. The Grand Jury recommends that standing orders be issued to the Harbor Patrol for a regular check of live-aboards.
4. The Grand Jury recommends that a regularly scheduled maintenance program be established for the marina, complete with work orders and a record of what is accomplished and by whom.

Recommendations

A number of fire hoses are in bad condition, and some are not even connected to the water outlets. Many fire extinguishers are missing from their containers, and those present are in poor condition.

The city animal regulations are not being enforced. Many animals were seen running through the area.

Navigational aids in the harbor are not sufficient. The lights on the buoys are hardly discernible.

Live-aboard people report that bilge pumping goes on frequently at night, but no citations have been issued in the last twelve months according to the Coast Guard, which is authorized to give such citations with fines up to \$500.

Leases to private businessmen in the harbor area are not being issued on a fair and equal basis. Some leases are for ten years or more, while others are on a month-to-month basis. One lease of the month-to-month type has been in effect since 1974.

Part of the boat owner dock fee is allocated by the city for police and fire protection. But these have already been covered by the property tax and possessory interest tax. It appears that the boat owners are victims of double taxation.

By state law, all revenues generated with the Tidelands must be expended within the Tidelands. It is doubtful that this is being done.

5. The Grand Jury recommends that a new slip assignment policy be adopted to correct present abuses. An inventory must be maintained of boats by slip assignment, showing actual ownership in order to eliminate "dummy" ownership.

6. The Grand Jury recommends that special attention be given to the harbor improvements such as breakwater construction to eliminate constant sanding and dredging.

7. The Grand Jury recommends that leasing practices with commercial businesses be consistent and fair.

8. The Grand Jury recommends that a complete fiscal and management audit of the harbor and the Tidelands Trust Fund be conducted by the State Lands Commission.

9. The Grand Jury recommends that a special Harbor District be formed with five elected directors from Santa Barbara County for the purpose of managing that district.